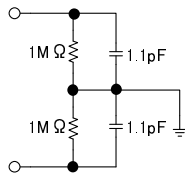


Specifications

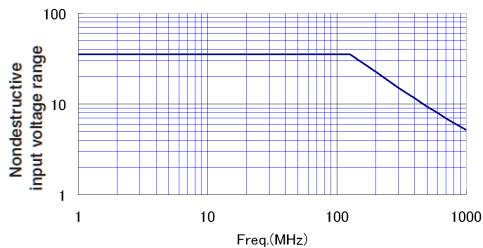
Frequency Bandwidth :DC to 1 GHz (-3dB or more)
 Att. ratio and DC accuracy :50:1, within $\pm 2\%$
 (excluding oscilloscope error at a 50 ohm load)
 Max. operating input voltage : $\pm 35\text{V}$ (DC+ACpeak)
 Max. differential input voltage : $\pm 25\text{V}$ (DC+ACpeak)
 Max. non-destructive voltage : $\pm 100\text{V}$ (transient)
 Max. non-destructive voltage : $\pm 35\text{V}$ (continuous)
 Total length :Approx. 1.2 m

Input impedance :
 1 M-ohm//Approx. 1.1 pF (to the ground)
 Diff. input impedance (Reference)
 2 M-ohm//Approx. 0.6 pF



Input equivalent circuit

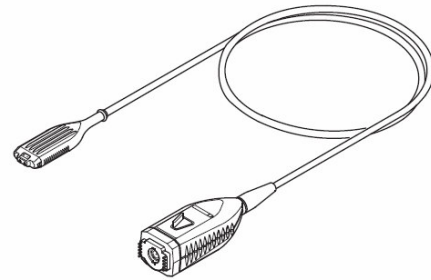
Derating of the input voltage by frequency



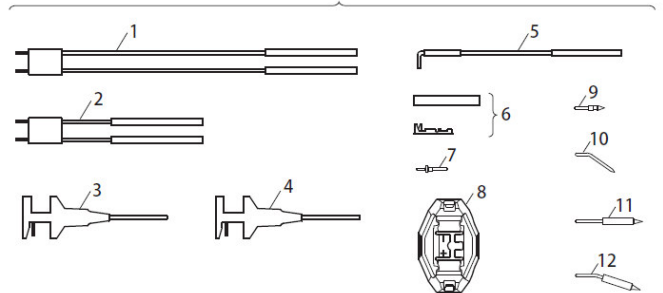
Accessory and Replacement Part Numbers

Product	Model Name	Description
Differential Probe PBDH1000	701924	1 GHz BW, 25 V differential voltage, 1 M-ohm input impedance
GND lead	B8099KQ	Order Q'ty : 5
Pair lead (5 cm)	B8099KV	Order Q'ty : 5, 100 ohm damping resistor
Pair lead (10 cm)	B8099KU	Order Q'ty : 5, 150 ohm damping resistor
Micro clip (Black)	B9852VX	A set of ten, for 1.27 mm pitch
Micro clip (Red)	B9852VY	A set of eight, for 1.27 mm pitch
Straight pin	B8099DL	Order Q'ty : 10
Angle pin	B8099DM	Order Q'ty : 10
Spring type straight pin	B8099DJ	Order Q'ty : 5
Spring type angle pin	B8099DK	Order Q'ty : 5
Pin with flange	B8099KX	Order Q'ty : 5
Cover	B8099KY	Order Q'ty : 2
Contact	B8099KW	A set of ten, With heat shrinkable tube

Contents



Attachments



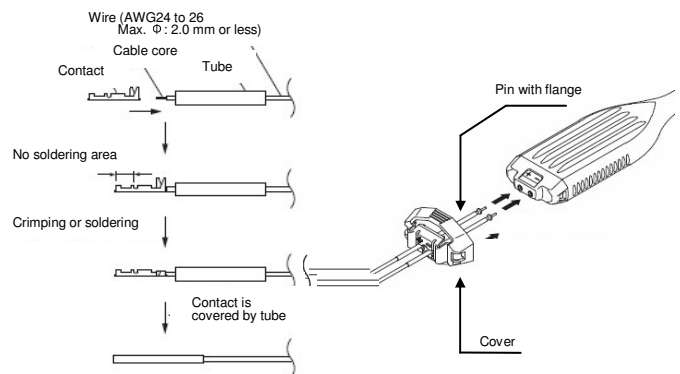
No.	Product	Quantity
1.	Pair lead (10 cm)	2
2.	Pair lead (5 cm)	2
3.	Micro clip (red)	1
4.	Micro clip (black)	2
5.	GND lead (6 cm)	2
6.	Contact, tube *1, *2	10
7.	Pin with flange *2	10
8.	Cover *2	2
9.	Straight pin	4
10.	Angle pin	4
11.	Spring type straight pin	4
12.	Spring type angle pin	4

*1 for 0.64 mm square pin

*2 Parts for making a extension lead

Creating the extension lead

The extension lead can be created from the parts



Frequency Characteristic with Accessories

