



# Application Note

Document Number    APL-L0002

Updated 07/19/2007    Rev. A

**Cursor Value (what it is measuring)**

---

## **Benefits of using this application**

---

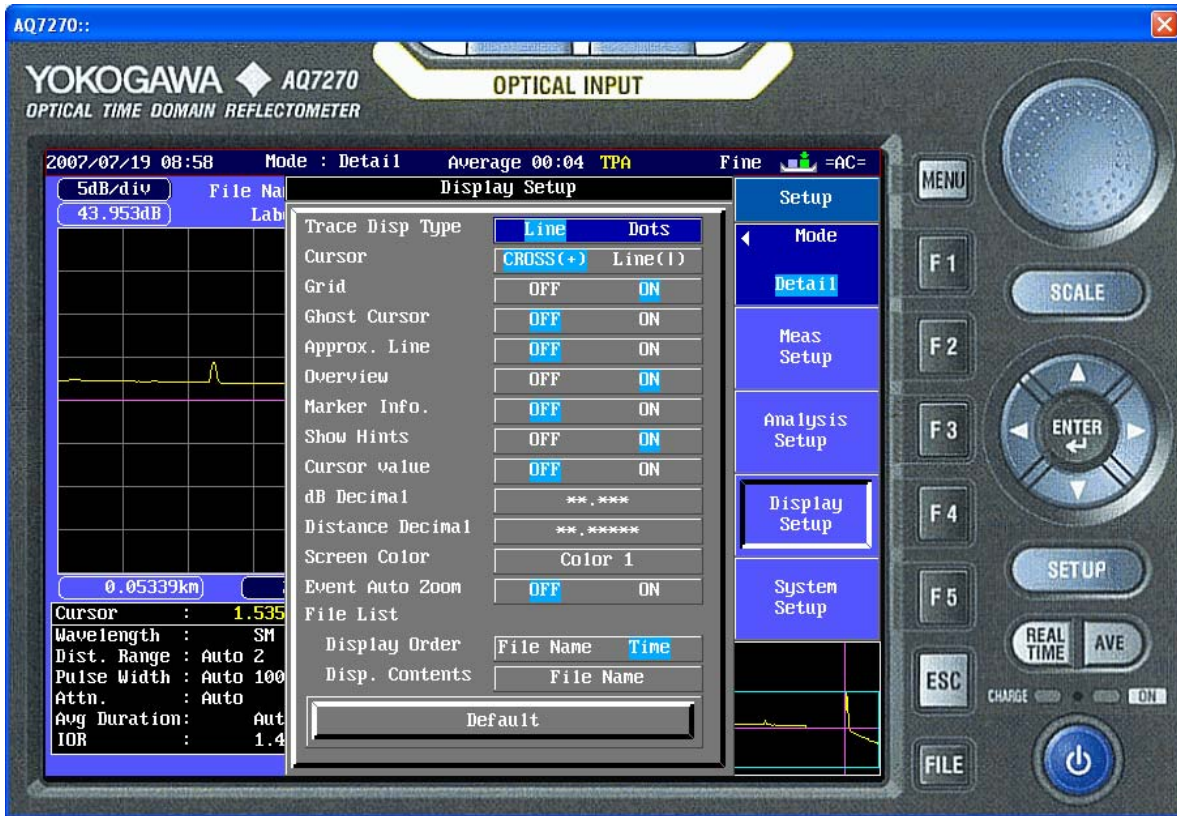
This application describes value of the cursor as displayed when measuring with the AQ7270 OTDR

---

## **Purpose/Description**

---

This procedure provides detailed instructions on how to set the AQ7270 OTDR to display the cursor value and describe what the cursor value means.



In order to turn on the Cursor value display select the SETUP button.

Note: The OTDR must be in either Detail or Multi WL mode in order to see and/or change the following options.



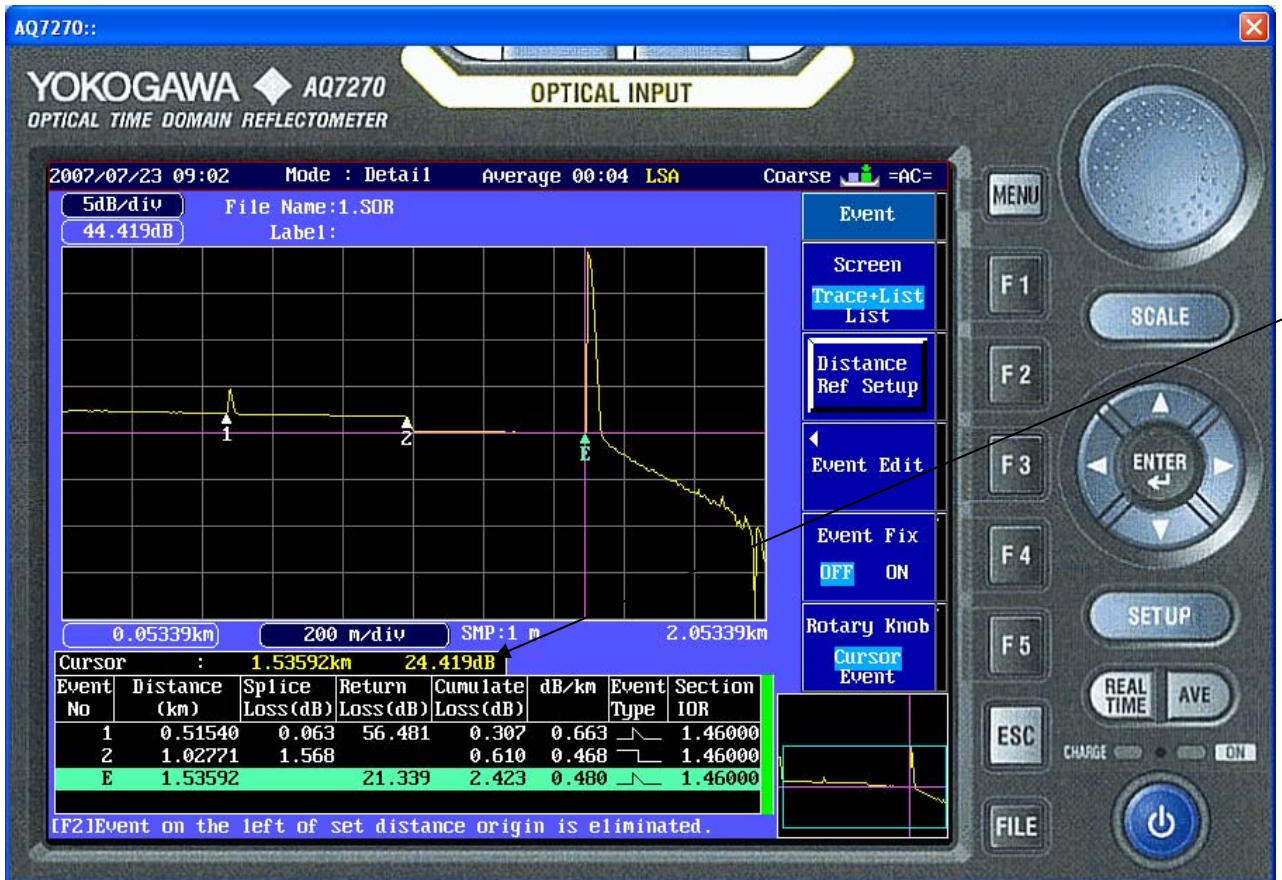
Then select the Display Setup soft key.



You can then use the arrow and enter key to turn the

Cursor value ON





The Cursor value displays the level in dB that the signal is above the noise floor of the optical port you are connected to. The noise floor is basically the Dynamic range. This lets you know if you are approaching the maximum distance that you can test with the OTDR. As the cursor value approaches zero the OTDR is nearing its maximum measurable distance due to the condition of the fiber optic cable.

### Dynamic Range

The backscattering light level that the AQ7270 can measure.

