
This user's manual explains the functions and operating procedures of the DL350 Assistant Software. To ensure correct use, please read this manual thoroughly before beginning operation. After reading this manual, keep it in a safe place.

Notes

- The contents of this manual are subject to change without prior notice as a result of continuing improvements to the instrument's performance and functionality. The figures given in this manual may differ from those that actually appear on your screen.
- Every effort has been made in the preparation of this manual to ensure the accuracy of its contents. However, should you have any questions or find any errors, please contact your nearest YOKOGAWA dealer.
- Copying or reproducing all or any part of the contents of this manual without the permission of YOKOGAWA is strictly prohibited.

Trademarks

- Microsoft, Windows, Windows 7, Windows 8, Windows 8.1, and Windows 10 are either registered trademarks or trademarks of Microsoft Corporation in the United States and/or other countries.
- Adobe and Acrobat are either registered trademarks or trademarks of Adobe Systems Incorporated in the United States and/or other countries.
- In this manual, the ® and TM symbols do not accompany their respective registered trademark or trademark names.
- Other company and product names are registered trademarks or trademarks of their respective holders.

Revisions

- 1st Edition: July 2017
- 2nd Edition: October 2017
- 3rd Edition: December 2017

Disclaimers

By downloading and installing this software, the customer agrees to all of the following disclaimers.

- Yokogawa bears no liability for any problems occurring as a result of downloading or installing this software.
- Yokogawa bears no responsibility for any damage caused directly or indirectly as a result of using this software.
- This software is provided free of charge, however no unlimited warranty against software defects exists, nor is any claim made that the product is free of all defects whatsoever. Also, Yokogawa is not always able to repair defects (“bugs”) in, or respond to questions or inquiries about this software.
- Yokogawa reserves all rights to this software, including but not limited to all property rights, ownership rights, and intellectual property rights.

Contents

Disclaimers	ii
Chapter 1 Preparation	
1.1 Overview and Recommended Environment of This Software	1-1
1.2 Installing/Uninstalling This Software	1-2
1.3 Connecting the DL350 to the PC	1-5
Chapter 2 How to Use This Software	
2.1 Starting/Exiting This Software	2-1
2.2 Window Description	2-5
2.3 Applying a Setup File to the DL350 (Load Setup File)	2-7
2.4 Starting and Stopping the DL350 on This Software	2-8
2.5 Backing up Data (Backup)	2-9
2.6 Transferring Files (Transfer File)	2-10
2.7 Editing a Setup File (Edit Setup File)	2-11
Chapter 3 Troubleshooting and Messages	
3.1 Troubleshooting	3-1
3.2 Messages	3-2
Chapter 4 Specifications	
4.1 Supported Model and Functions	4-1
Appendix	
Appendix Software Version and Additional Functions	App-1
Index	

1

2

3

4

App

Index

1.1 Overview and Recommended Environment of This Software

Overview

This software supports setup operations and on-site tasks of the DL350.

You can use this software to perform the functions listed below.

Function	Overview
Load Setup File	You can directly apply a DL350 setup file stored in the PC to the DL350.
DL350 Start/Stop	You can start or stop measurement performed on the DL350.
Backup	You can back up the data stored in the SD card or USB memory installed with the DL350 to the PC.
Transfer File	You can transfer (copy) files bidirectionally between the DL350 and PC.
Edit Setup File	You can edit the DL350 setup file stored in the PC.

Recommended Environment

Install this software on a PC having an environment where one of the OSs listed below runs.

OS (Operating System)

Windows 7 (32-bit/64-bit), Windows 8 (32-bit/64-bit), Windows 8.1 (32-bit/64-bit), and Windows 10 (32-bit/64-bit)

Communication Interface

USB 2.0

Ethernet 100BASE-TX

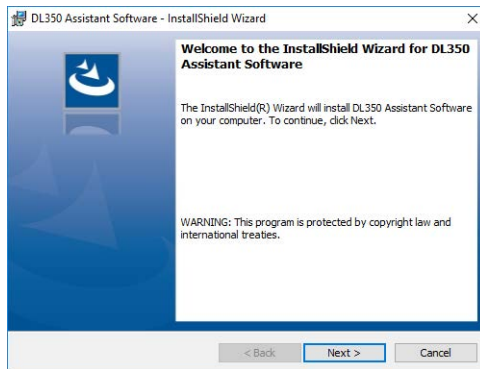
1.2 Installing/Uninstalling This Software

Installing This Software

The following procedure explains how to install the software on Windows 10.

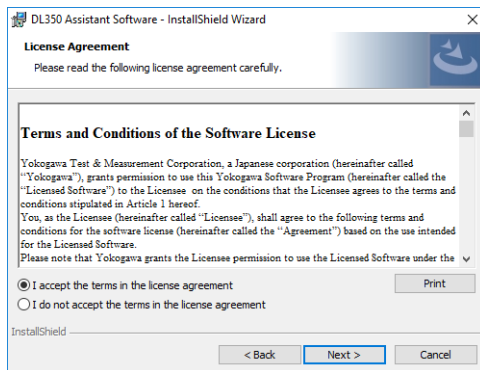
Download the latest version of this software from our website.

1. Turn on the PC and log in to it with administrator privileges.
2. Execute the installation file “setup.exe” downloaded from our website. When the downloaded file is a zip one, uncompress it and then execute “setup.exe.”
3. The installation wizard window appears. Click **Next**.

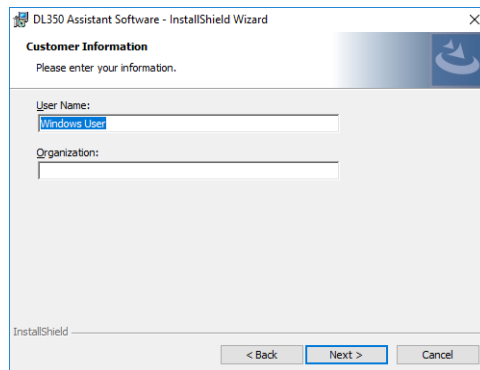


4. A software licensing agreement appears. Review the licensing agreement, click “I accept the terms in the license agreement,” and then click **Next**.

If you click “I do not accept the terms in the license agreement,” you will not be able to install the software.

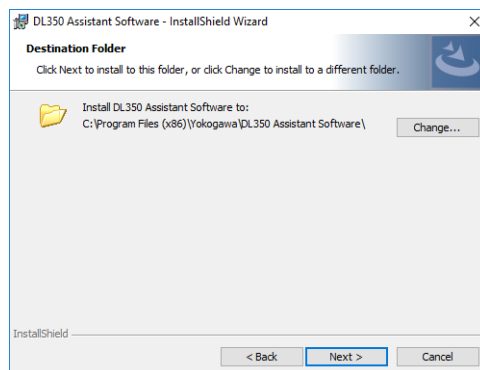


5. The user information registration window appears. Enter the **User Name** and **Organization**, and click **Next**.

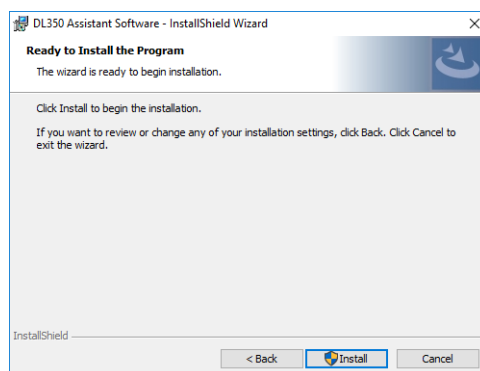


6. Select the installation destination, and click **Next**. Click **Change...**, and you can change the destination.

The default setting of the installation directory of this software is shown in the figure below.

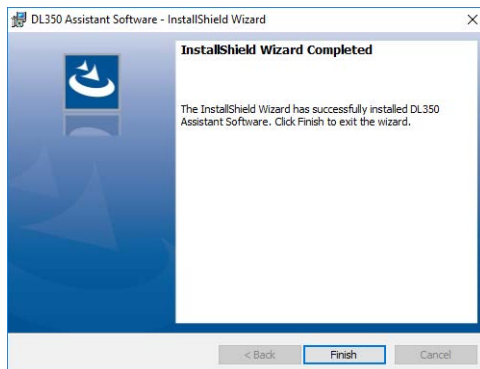


7. A window prompting you to start the installation process appears. If there is no problem with the installation settings, click **Install**.



1.2 Installing/Uninstalling This Software

8. The installation process of this software starts. The User Account Control window appears in the middle of the installation process. Click **Yes**.
9. When the software installation has finished normally, the window below appears. Click **Finish**.




When the installation process has finished, a **Yokogawa** folder is created in the Windows start menu. Under the folder, a shortcut to **DL350Assistant** is added. A shortcut icon is also created on the desktop.


Uninstalling This Software

- Windows 10: You can uninstall the software in one of the ways below.
- Windows 7, Windows 8, Windows 8.1: You can use Control Panel to uninstall the software.
- The following procedure explains how to uninstall the software on Windows 10.

Using Apps & features to Uninstall the Software

1. Click  (Start button) in the lower left of the screen, and select **Settings**.
2. On the Settings window, select **System** and then **Apps & features**.
3. Select **DL350 Assistant Software** from the app (program) list, and click **Uninstall**.
4. A dialog appears for you to confirm whether to uninstall the software. Click **Uninstall**.
To cancel the uninstallation process, click any area outside the confirmation dialog.
5. The User Account Control window appears in the middle of the uninstallation process. Click **Yes**. The uninstallation process continues.

Using Control Panel to Uninstall the Software

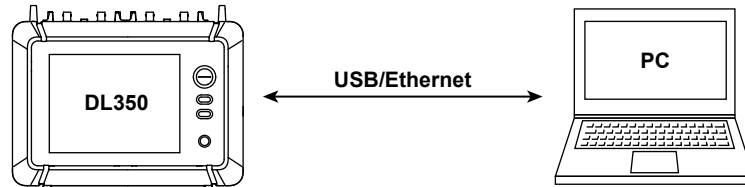
1. Click  (Start button) in the lower left of the screen, and select **Control Panel** under the **Windows System**.
2. Click **Programs and Features** on the Control Panel window.
3. On the Programs and Features window, select **DL350 Assistant Software** and click **Uninstall**.
4. A window appears for you to confirm whether to uninstall the program.
To uninstall it, Click **Yes**. The software is uninstalled.
Click **No** to cancel the uninstallation process.
The User Account Control window appears in the middle of the uninstallation process. Click **Yes**. The uninstallation process continues.

1.3 Connecting the DL350 to the PC

Connect your PC to the DL350 via USB or Ethernet.

This software can be used to communicate to only a single DL350 simultaneously.

For details on how to connect them, see the DL350 User's Manual, IM DL350-17EN (pdf file).



Note

A dedicated USB driver (YKMUSB) or IVI driver (VISA) is necessary to connect the DL350 to the PC via USB.

You can download the dedicated USB driver (YKMUSB) and installation manual from the following URL:

<http://www.yokogawa.com/jp-yimi/tm/F-SOFT/>

After downloading them, install the USB driver, following its installation manual.

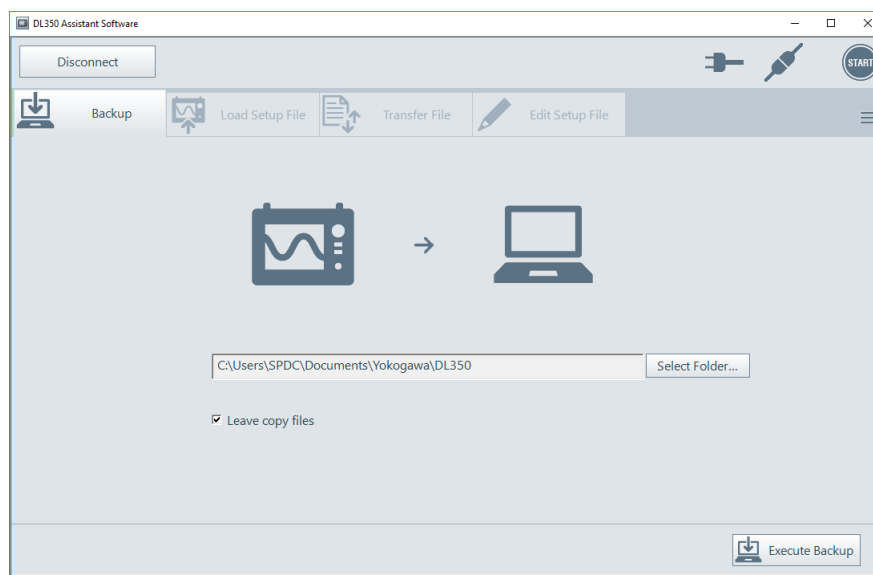
DL350 Firmware and Software Version Compatibility Table

DL350 firmware version	Version of this software
1.01 to 1.02	1.01 to 1.02
1.10 and later	1.10 and later

2.1 Starting/Exiting This Software

Starting the Software

1. Turn on the DL350 connected to the PC.
2. Double-click the DL350Assistant icon on the desktop.
This software starts. The window shown in the figure below appears by default.



Note

- After starting the software on the USB-connected DL350, the DL350 is automatically searched to start communication. When multiple DL350s are connected through a USB hub and others, communication to the first found one is started.
When the DL350 is connected via Ethernet, or when it is done via USB after the software is started, no DL350 is automatically searched. For details, see “Starting Communication to the DL350” on page 2-2.
- Restarting this software brings up the window of the function selected on the function selection tab at the time of the last exit process. For the function selection tabs, see section 2.2, “Window Description.”

Starting Communication to the DL350

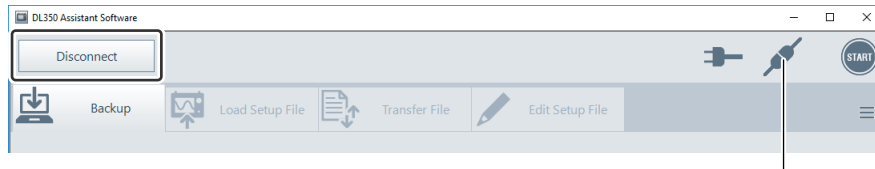
Connection via USB (Automatic Search)

After starting the software, the DL350 is automatically searched to start communication.

When multiple DL350s are connected through a USB hub and others, communication to the first found one is started.

To cancel communication, click **Disconnect**.

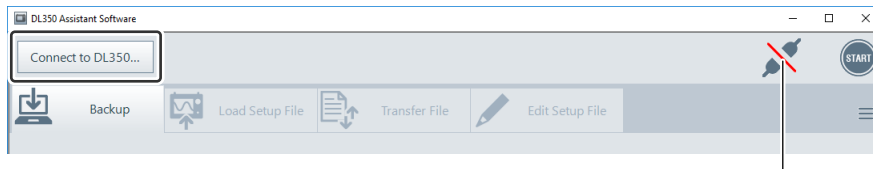
When the DL350 to communicate is changed, or when no DL350 has been automatically searched, search the target DL350 using the procedure in “Connection via Ethernet (Search)” described later.



Display of the communication state (communicating)

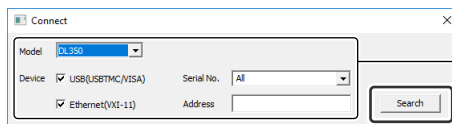
Connection via Ethernet (Search)

1. Click **Connect to DL350...** in the upper left of the window.
 - A search window appears.
 - When communication to the DL350 has been already established, follow step 4 to disconnect the communication temporarily, and then click **Connect to DL350...**



Display of the communication state (disconnecting)

2. Specify search conditions, and click **Search**.
A search result list appears.



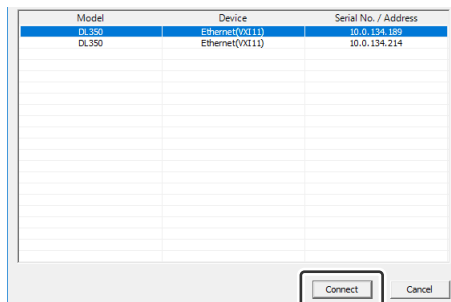
Search conditions

Search conditions

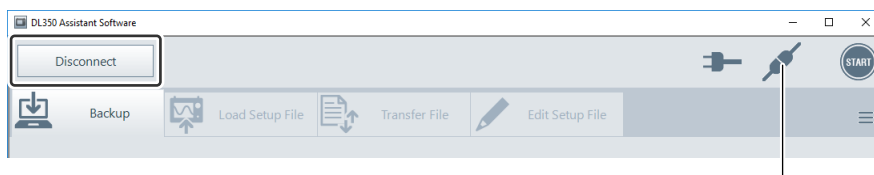
- **Model:** Fixed to DL350.
- **USB(USBTMC/VISA):** Select this box to search USB-connected DL350s.
- **Ethernet(VXI-11):** Select this box to search Ethernet-connected DL350s.
- **Serial No.:** Select the serial number of the USB-connected DL350 from the pull-down menu. When you do not specify a serial number, select **All**.
 - * When **All** (default setting) is selected, the search result list of USB-connected DL350s appears without the click of **Search**.
- **Address:** Enter the IP address of the Ethernet-connected DL350 in text format. When you do not specify an IP address, keep this field blank.

- Click the DL350 to communicate to select it, and click **Connect**.

This starts communication to the DL350 and changes the display of the communication state to communicating.



- To stop communication, click **Disconnect**.



Display of the communication state (communicating)

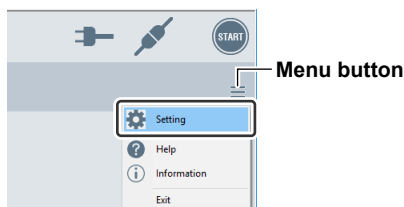
Changing Settings of This Software

Show or hide the **Edit Setup File** tab, and change the display language of this software.

For **Edit Setup File**, see section 2.7, “Editing a Setup File (Edit Setup File).”


- Click the menu button in the upper right of the window, and click **Setting** among the displayed menus.

The Setting window appears.



- Set the items, and click **OK**.

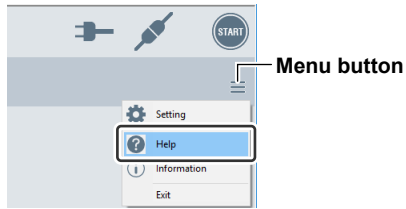


- Disable Edit Parameter:** Select this box to hide the **Edit Setup File** tab.
- Language:** Click , and select **Japanese** or **English** as a display language. When you have changed the display language, restart the software.

Displaying Help of This Software

Display the User's Manual of this software (PDF file). The PC should have software such as Adobe Reader installed, which you can use to browse PDF files.

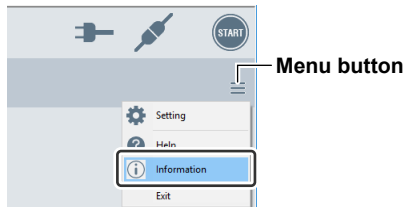
Click the menu button in the upper right of the window, and click **Help** among the displayed menus.



Displaying the Version Information of This Software

1. Click the menu button in the upper right of the window, and click **Information** among the displayed menus.

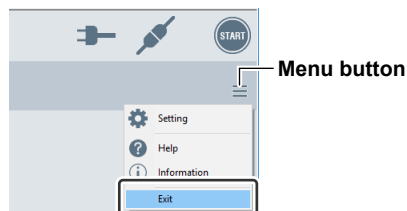
The version information of this software is displayed.



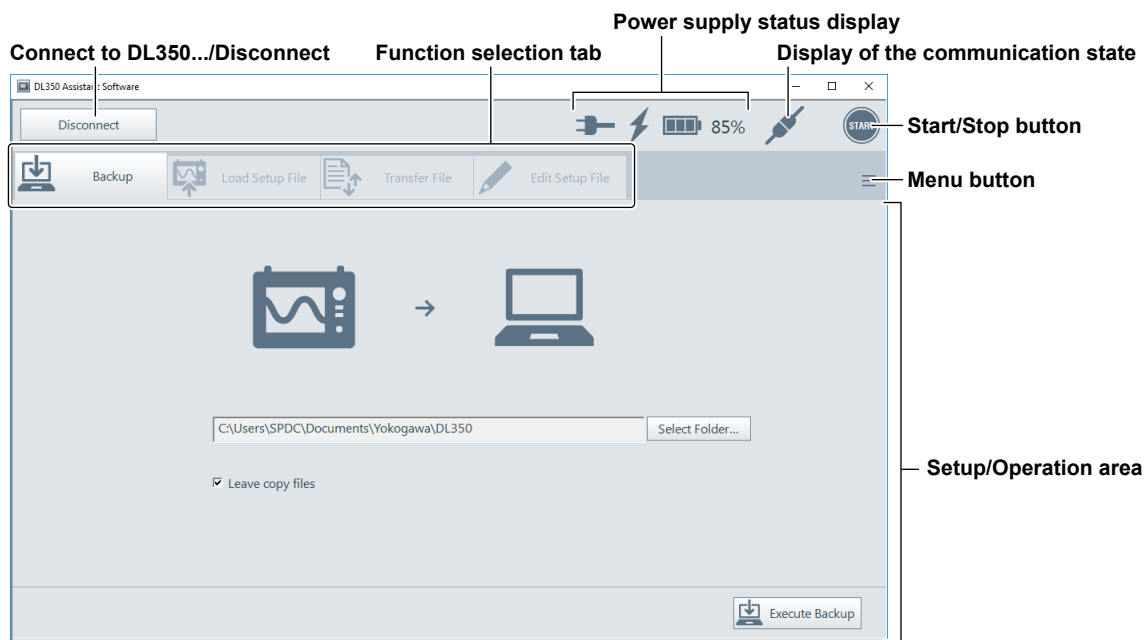
2. To exit the display of the version information, click **OK**.

Exiting the Software

To exit this software, click the menu button in the upper right of the window, and click **Exit** among the displayed menus.



2.2 Window Description



Connect to DL350.../Disconnect

To search the DL350 to communicate, or connect/disconnect it, use this button. For details, see "Starting Communication to the DL350" on page 2-2.

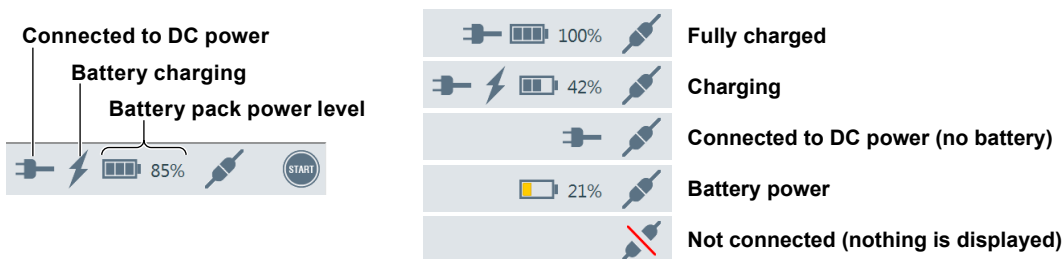
Function Selection Tab

Select the functions of this software. For details, see the following sections:

- 2.3 Applying a Setup File to the DL350 (Load Setup File)
- 2.5 Backing up Data (Backup)
- 2.6 Transferring Files (Transfer File)
- 2.7 Editing a Setup File (Edit Setup File)

Power Supply Status Display

The status of the power supply used by the connected DL350 is displayed at the top of the screen.



Battery Status Display

The battery level is displayed using three lines and colors. The percentage is displayed to the right.



When the battery level is less than 10%, the following conditions occur.

- When the battery level falls to less than 10%, a warning message is displayed.
- When the battery level falls to less than 5%, the DL350 is disconnected, and a message is displayed.

A connection cannot be made to a DL350 with a battery level less than 5%.

2.2 Window Description

Display of the Communication State

Display the state of communication to the DL350. For details, see “Starting Communication to the DL350” on page 2-2.

Start/Stop Button

Start or stop the measurement performed on the communicating DL350. For details, see section 2.4, “Starting and Stopping the DL350 on This Software.”

Menu Button

Display the menus of the software. For details, see page 2-3 to 2-4.

Setup/Operation Area

Display the setting items and operation buttons of the function selected in a function selection tab.

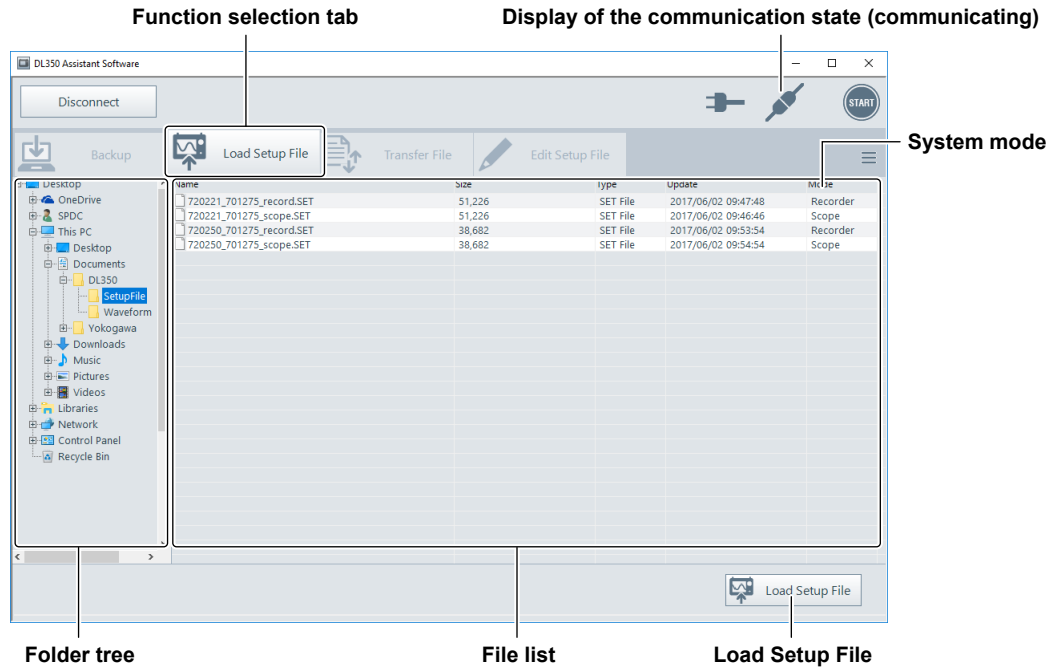
Note

You can change the size of a screen (window) of this software by dragging its frame. A size smaller than the default one is unavailable. Even after you exit the software, the changed size of the window remains unchanged.

2.3 Applying a Setup File to the DL350 (Load Setup File)

You can directly apply a DL350 setup file stored in the PC to the DL350.

Since the settings and system mode of the DL350 are changed according to the applied setup file, you can start measurement immediately.



1. Start communication to the DL350 that the setup file will be applied to.
For how to start communication, see “Starting Communication to the DL350” on page 2-2.
2. Click the **Load Setup File** function selection tab.
A folder tree and file list appear.
3. From the folder tree, select the folder in the PC where the setup file is stored.
The setup file (with the .SET extension) in the selected folder appears in the file list.
4. Select the setup file in the file list, and click **Load Setup File**.
This applies the setup file to the DL350 and changes the DL350 system mode (scope mode/recorder mode) to the one of the setup file. You can check the system mode of the setup file in the **Mode** column of the file list in advance.

Note

- The application of the setup file overwrites the existing DL350 settings, resulting in the loss of those settings. We recommend that you save the existing DL350 settings in a setup file (with the .SET extension) in advance.
- If the module configuration inserted into the DL350 differs from the one of the setup file, the message “**The module configuration is different.**” appears. Upon a click on **OK**, only module settings without differences are applied and the ones with differences are not. To cancel the application, click **Cancel**.
- To check the module configuration of the setup file, load the setup file to display **Overview** by using the **Edit Setup File** function. For details, see section 2.7, “Editing a Setup File (Edit Setup File).”

2.4 Starting and Stopping the DL350 on This Software

You can start or stop measurement performed on the DL350.

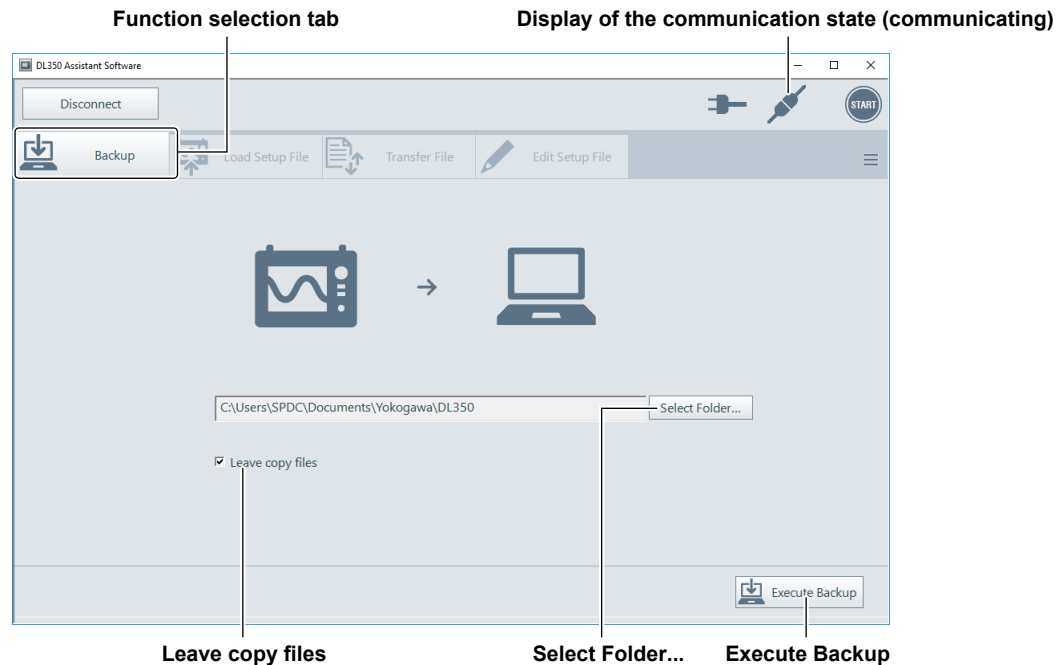
1. Start communication to the DL350 you want to operate.
For how to start communication, see “Starting Communication to the DL350” on page 2-2.
2. Click **START** in the upper right of the window to start measurement.
During the measurement, the display of the Start/Stop button changes to **STOP**.



3. To stop the measurement, click **STOP**.

2.5 Backing up Data (Backup)

You can back up the data stored in the SD card or USB memory installed with the DL350 to the PC.



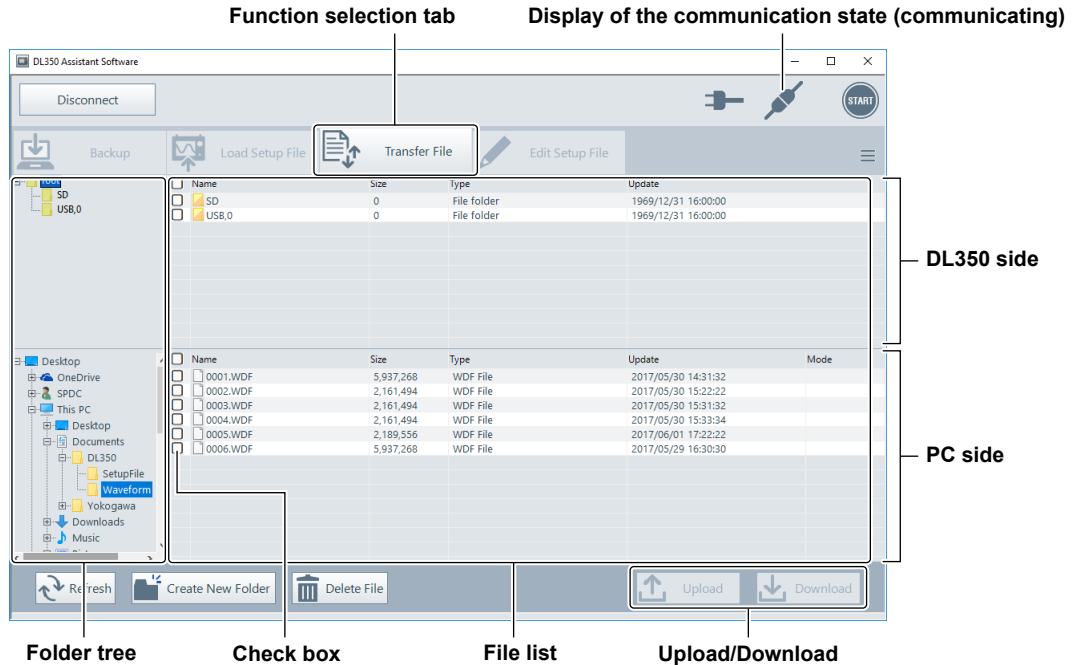
1. Start communication to the DL350 from which the data will be backed up.
For how to start communication, see "Starting Communication to the DL350" on page 2-2.
2. Click the **Backup** function selection tab.
3. Click **Select Folder...**, select a destination location where the backup data will be saved, and click **OK**.
A default destination is Yokogawa>DL350 created in the Documents folder of the PC.
4. To leave the data stored in the DL350 after the backup process, select the **Leave copy files** box.
5. Click **Execute Backup**.
When the backup process starts, a dialog box appears for you to see its progress.
6. To stop the backup process, click **Cancel** displayed in that dialog.

Note

- One backup operation backs up the data of all storage media installed with the DL350 (except for a network drive). When two USB memories are installed, two folders "USB,0" and "USB,1" are created as destinations, with data backed up in each folder.
- When the folder with the same name already exists as the destination of backup data, a data file is saved in that folder. For the data file with the same name existing in that folder, the software checks the sizes and creation dates of both that data file and backup data. When they are the same, the data file is not overwritten with the backup data. When they are different, the backup data is saved with a serial number added to the end of the data file name.

2.6 Transferring Files (Transfer File)

You can transfer (copy) files bidirectionally between the DL350 and PC.



1. Start communication to the DL350 from or to which the file will be transferred.
For how to start communication, see “Starting Communication to the DL350” on page 2-2.
2. Click the **Transfer File** function selection tab.
The folder tree and file list of the DL350 appear in the upper half of the window, and those of the PC in the lower half.
3. In the folder tree, click a folder to select it.
Files contained in the selected folder appear in the file list.
4. In the file list, click the check box of a target file to select the file.
 - You can select multiple files.
 - The file list including the file of the last selected check box becomes active.
5. Check locations from and to which the file will be transferred.
 - The active file list is a source location from which it will be transferred. All files selected in the source will be transferred.
 - The folder selected in the inactive folder tree is a destination location to which it will be transferred.
6. Click **Upload** or **Download** to start a transfer process.
You can click **Upload** when the file list of the PC is active and click **Download** when that of the DL350 is active.

Note

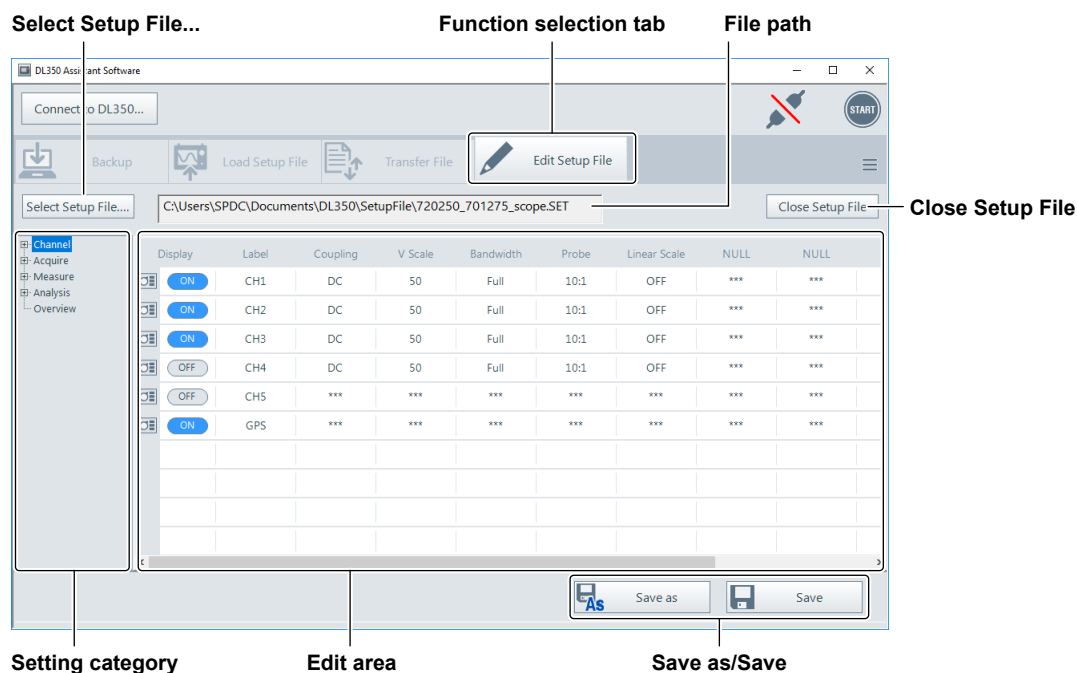
- Click **Refresh** to refresh the active file list.
- Click **Create New Folder** to create a new folder in the active file list.
- Click **Delete File** to delete the file selected in the active file list.
- Right-click a file and select **Rename** in the file list to enable you to rename the file (only on the PC side).
- Drag and drop a file to enable you to transfer it between the file lists of the DL350 and PC.

2.7 Editing a Setup File (Edit Setup File)

You can edit the DL350 setup file stored in the PC.

For the editable setting items, see “Setting Items” on page 2-12.

In advance, save the setup file (with the .SET extension) on the DL350, and then use Transfer File to transfer it to the PC.



1. Click the **Edit Setup File** function selection tab.

2. Click **Select Setup File...**, select the setup file you want to edit, and click **Open**.

- The setup file is loaded, and the setting items appear in the edit area.
- You can also load the setup file by dragging and dropping it to the edit area.

3. Select a setting category, and edit the setting items in the edit area.

- Setting category: Click a setting category to change the setting items in the edit area. Click to display the details on the category in tree format. Click to hide the details.
- Edit area: Edit settings. For the operating procedure, see “Common Operations” on page 2-13.
- After any setting is edited, “*” is added to the end of the file name represented in a file path.

4. Click **Save as** or **Save** to save the edited setting.

- When you have clicked **Save as**, on a confirmation window, specify a destination location and file name and click **Save**.
- To close the setup file without saving it, click **Close Setup File**. When the setup file has been edited, a message appears asking you whether to save it. Click **No**.

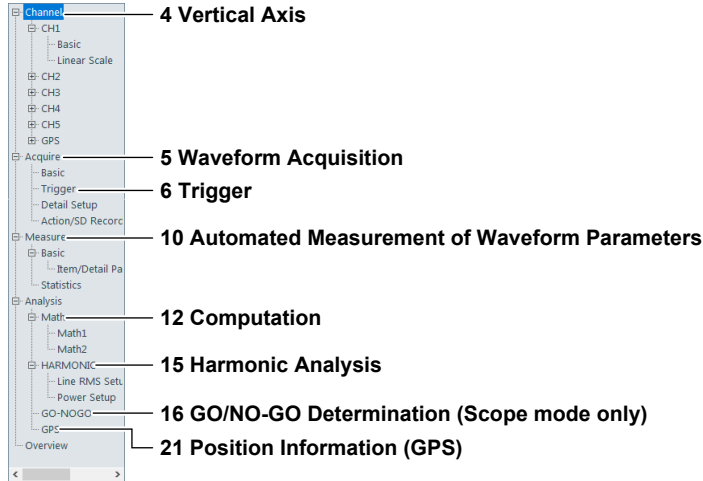
Note

- When you get a message saying “**Cannot start in this setting. Save this setting?**” in saving the setting, one or more setting items have errors. Check one of the error descriptions displayed under the message. To save this setting without any change, click **Yes**. To change this setting, click **No**, make changes to it, and then try to save it again. For details on errors, see section 3.2, “Messages.”
- The setup file edited on this software can be applied to the DL350 with the **Load Setup File** function. For details, see section 2.3, “Applying a Setup File to the DL350 (Load Setup File).”

Setting Items

Setting items and setting information depend on the system mode and module configuration of the DL350.

For details on the setting items, see the following chapters of the DL350 User's Manual, IM DL350-01EN (pdf file):



Setting Information List (Overview)

Click **Overview** as a setting category to enable you to list the information of the setup file loaded into the software. You can also check a module configuration.

The 'Overview' window displays a table with the following data:

Information		Model	DL350		
		Serial No.	TEMP01		
		Firm Version	0.89		
Slot	1	M720250	High-Speed 10 MS/s 1...		
	2	M701275	Acceleration/Voltage...		
Setup		System Mode	Scope		
Acquire	Basic	Time/div	10ms	Record Length	
		Sample Rate	10MS/s	Trigger Mode	
		Acquisition Mode	Normal	Acquisition Count	
	Trigger	Setting	Simple	Source	

Note

To make it easier to edit the setup file, this software enables you to mainly edit setting items required for measurement on the DL350. Configure setting items, which cannot be edited on this software, on the DL350 directly.

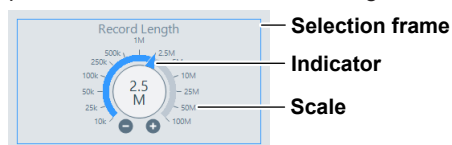
Common Operations

This section explains the operating procedure common to edits of a setup file.

Rotary Slider

Click near a setting value on a scale or click **+**/**-** to change the value.

The setting value appears in the center of the rotary slider. Working together this behavior, the indicator of the scale also points to the value. You can also change the setting value by dragging any point within a selection frame to right and left.



Selection Button

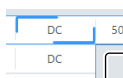
Click a setting value to select it. You can select only one button among choices.



Spin Box

Click **+** or **-** to change a setting value.

You can also click a text box to enter text.

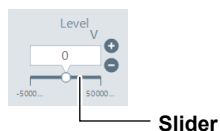


Spin Box with the Slider

The minimum value and maximum value of the setting value are displayed on the slider.

Click **+**/**-** or click the slider to change the setting value.

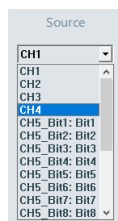
You can also click a text box to enter text.



Drop-down List

Click a setting field to display available choices. Click a setting value among the displayed choices to select it.

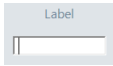
A scroll bar appears for many choices. You can drag the scroll bar to see hidden choices of the list.



2.7 Editing a Setup File (Edit Setup File)

Entering Text

Click a text box to enable you to directly enter a setting value or string on the keyboard.



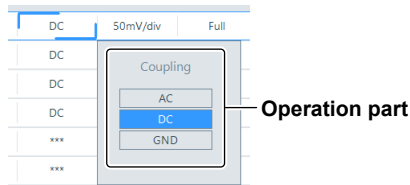
ON/OFF Button

After each click, the display switches to ON or OFF.



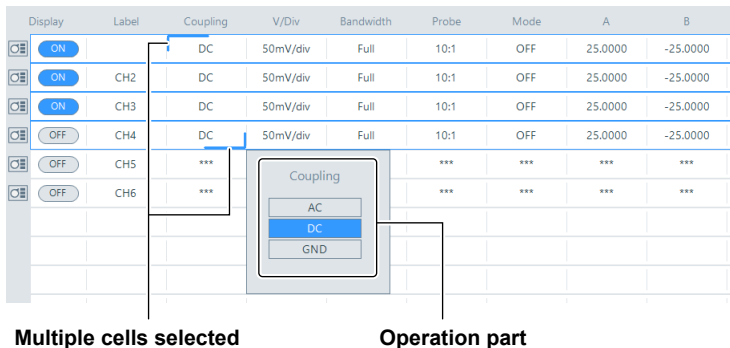
Setting Window in Tabular Form

Click a setting item cell to display an operation part including appropriate setting information. You can operate this part as you do in each operation part listed above. You can right-click to copy and paste the setting information.



You can select multiple cells of the same setting item to change their setting information at a time. Use the following procedure to do that:

1. Click-and-hold a cell and drag it in a lower or upper direction. In this process, you cannot exclude some cells existing on the way to the direction. You see an operation part including appropriate setting information. The setting information of the first clicked cell is selected.



2. Change the setting information.

Cells with the setting information the same as that of the first clicked cell are changed at a time. Cells with the setting information different from that of the first clicked cell are not changed.

3.1 Troubleshooting

Problem	Probable Cause/Corrective Action
Unable to search the DL350	<ul style="list-style-type: none">• The USB or Ethernet cable may not be connected properly. Connect the cable properly.• The DL350 cannot be searched if it is turned off. Turn on the DL350 power switch.• When the DL350 is connected via USB, a dedicated USB driver is required. For details, see section 1.3, "Connecting the DL350 to the PC."
Unable to start or stop the DL350	The DL350 may currently perform an auto setup process or access storage media. Wait for a while, and then start or stop the DL350 again.

3.2 Messages

Message	Explanation/Corrective Action
Connect to DL350.	This message appears when you have performed an operation requiring communication to the DL350 while it is not established.
Disconnected from DL350.	—
Folder not found.	This message appears when the folder specified as the destination of the backup data is not found. Specify a new destination.
Abort backup? (Yes/No)	This message appears when you have selected another function in the function selection tab during a backup process. Click Yes to abort the backup process.
Backup completed.	—
Backup failed.	—
Connection error due to low battery level.	—
The battery level is low. Forcibly disconnect when 5% is reached.	—
Because the battery level is low. Forcibly disconnected.	—
Setup file is not for DL350.	<ul style="list-style-type: none"> This message appears when you try to apply the selected setup file to the DL350 but the file is not for the DL350. Reselect a DL350 setup file. This message appears when the setup file loaded into the software is not for the DL350.
Setup file version is not compatible.	This message appears when the setup file created in the state where the version of this software is incompatible with that of firmware in the DL350 is loaded into this software or applied to the DL350. Upgrade this software or firmware in the DL350.
Loading setup file is completed.	—
Fail to load setup file.	—
The module configuration is different.	This message appears when you try to apply the setup file to the DL350 but its module configuration differs from that of the DL350. Module settings with differences are not applied to the DL350.
Fail to file transfer.	—
Fail to open setup file.	—
Parameter has been changed. Save the setting file? (Yes/No)	This message appears when you have closed the edited setup file without saving it. Click No to discard the unsaved edits.
Following sub channel was set to Off due to limit of memory capacity.	2.10,* 2.11,* 2.12*
Cannot set all sub-channels input to on due to limit of memory capacity.	2.10,* 2.11,* 2.12*
SD Card recording is valid when the sampling rate is slower than the values shown below. 1CH : 1MS/s(1us) 2CH : 500kS/s(2us), 3 - 5CH : 200kS/s(5us) 6 - 10CH : 100kS/s(10us)	—
Go-Nogo is available while Trigger Mode is - 'Single' or 'Normal' - 'Auto' (Faster than 50ms/div)	4.1,* Chapter 13*
Cannot be executed when the time base setting is to be an External clock.	3.1,* 3.2*
Average practice can't be done because the record length of the history exceeds the record length that it can be carried out.	Chapter 17*
Cannot start at the current record length. Shorten the record length or meet the following condition. * Set the trigger mode to Auto, decrease T/Div to less than 100 msec/div to enable roll mode. * Set the trigger mode to Single or On Start.	3.1,* 4.1*
Cannot start when the time base set to external clock while Acq. Mode set to envelope.	3.1*
SD Card recording is valid when the record length is longer than 1M.	3.1*
Set acquisition mode to Normal when using a wave window trigger.	3.1,* 3.2*

Message	Explanation/Corrective Action
The wave window trigger cannot be used if the sampling rate is faster than 500 kS/s or slower than 10 kS/s.	3.1*
When a record length is shorter than 25k, set a T/div slower than 10ms/div.	
Cannot start while No GO/NO-GO condition.	Chapter 13*
Cannot start while time of one file is less than 10sec.	3.1,* 3.2*
Set the sub-channel number less than 16 while the record length shorter than 10k.	—
It is not possible to set 17 or more as bit size to the FastCH of subchannel numbers 3 and 9.	2.12*
Please use other FastCH for 17 or more bits of data.	
If the input of the next FastCH or SlowCH is set to ON, bit size cannot be set to 17 or more.	2.12*
Please turn OFF the input of the next FastCH or SlowCH to get 17 or more bits of data.	
If the bit size of the previous FastCH is 17 or more, it is not possible to get this FastCH or SlowCH.	2.12*
Please set 16 or fewer as bit size to the previous FastCH.	
Cannot start with T/div faster than 100ms/div for SD card recording.	3.1,* 3.2*
Cannot be changed when trigger A is not X. Set the state of the channel corresponding to condition A to 'X'.	4.7* to 4.12*
If the trigger mode is set to Single or OnStart, the acquisition mode cannot be set to Average.	3.1*
Cannot be set when the acquisition mode is set to average.	3.1*
Cannot be set during SD Card recording.	—
Cannot be set because there are too many display channels at the current record length. Shorten the record length.	3.1*
Cannot set On this module.	—
Cannot be set when the trace is set to a frequency module.	—
Because a record length is too long, it can't be set up by the present number of indication channels.	Chapter 2,* 3.1*
Cannot set while action mode is on.	3.1*
Cannot set while Go-Nogo mode. Turn Off Go-Nogo mode first.	Chapter 13*
When modules with subchannels are installed, it is not possible to set such a setting that the sample interval of those modules will be 1s or more. (sample rate of those modules will be 1S/s or less).	3.1,* 3.2*

* See the appropriate chapters and sections of the DL350 User's Manual, IM DL350-02EN (pdf file).

4.1 Supported Model and Functions

Item	Specifications
Supported model	DL350
Number of measuring instruments that can be connected	1
Function	<ul style="list-style-type: none">• Back up the data of the memory installed with the DL350• Load the setup file stored in the PC to the DL350• Move and delete files between the PC and DL350• Change the setting information on the setup file stored in the PC

Appendix Software Version and Additional Functions

The table below shows the software versions and the corresponding added functions.

If the software is not of the newest version, you will not be able to use all the functions covered in this manual.

For how to check the version information of this software, see “Displaying the Version Information of This Software” on page 2-4.

Software Versions and the Main Functions That Have Been Added

Version	Added Function
1.02 and later	Setting category items (Measure, Analysis) were added to Edit Setup File.
1.10 and later	A timeout setting was added to the duty cycle measurement of the FV setting on the frequency module.
	The fast channel multiplexing function of the SENT monitor module is now supported.
	A battery level check function was added.
	GPS settings were organized into a table.

Index

B	Page	T	Page
Backup.....	2-9	Transfer file.....	2-10
Battery level.....	2-5	Troubleshooting.....	3-1
C	Page	U	Page
Connection via ethernet.....	1-5, 2-2	Uninstalling.....	1-4
Connection via USB.....	1-5, 2-2	USB driver.....	1-5
D	Page	V	Page
Display of the communication state.....	2-2	Version information.....	2-4
Drop-down list.....	2-13		
E	Page		
Edit setup file.....	2-11		
Entering text.....	2-14		
Exiting the software.....	2-4		
F	Page		
Function selection tab.....	2-5		
H	Page		
Help.....	2-4		
I	Page		
Installing.....	1-2		
L	Page		
Language.....	2-3		
Load setup file.....	2-7		
M	Page		
Menu button.....	2-6		
Messages.....	3-2		
O	Page		
ON/OFF button.....	2-14		
OS.....	1-1		
Overview.....	2-12		
P	Page		
Power supply status display.....	2-5		
R	Page		
Rotary slider.....	2-13		
S	Page		
Search.....	2-2		
Selection button.....	2-13		
Setting window in tabular form.....	2-14		
Specifications.....	4-1		
Spin box.....	2-13		
Spin box with the slider.....	2-13		
Starting the software.....	2-1		
Start/Stop.....	2-8		
System mode.....	2-7		