

This manual explains how to use the YOKOGAWA OTDR Remote Controller (hereinafter referred to as the remote controller) to configure the network settings and update the firmware of the AQ7277B Remote OTDR (hereinafter referred to as the AQ7277B).

For information on how to use the other features of the remote controller, see the software's help.

Keep this manual in a safe place for quick reference in the event a question arises.

Notes

- The contents of this manual are subject to change without prior notice as a result of continuing improvements to the instrument's performance and functionality. The figures given in this manual may differ from those that actually appear on your screen.
- Every effort has been made in the preparation of this manual to ensure the accuracy of its contents. However, should you have any questions or find any errors, please contact your nearest YOKOGAWA dealer.
- Copying or reproducing all or any part of the contents of this manual without the permission of YOKOGAWA is strictly prohibited.

Trademarks

- Microsoft, Internet Explorer, Windows, Windows 7, Windows 8, and Windows 8.1 are either registered trademarks or trademarks of Microsoft Corporation in the United States and/or other countries.
- Adobe, Acrobat, and PostScript are either registered trademarks or trademarks of Adobe Systems Incorporated.
- In this manual, the ® and TM symbols do not accompany their respective registered trademark or trademark names.
- Other company and product names are registered trademarks or trademarks of their respective holders.

Revisions

- 1st Edition: September 2016

Notes about Using This Software

Disclaimer

By downloading and installing this software, the customer agrees to all of the following disclaimers.

- Yokogawa bears no liability for any problems occurring as a result of downloading or installing this software.
- Yokogawa bears no responsibility for any damage caused directly or indirectly as a result of using this software.
- This software is provided free of charge, however no unlimited warranty against software defects exists, nor is any claim made that the product is free of all defects whatsoever. Also, Yokogawa is not always able to repair defects ("bugs") in, or respond to questions or inquiries about this software.
- Yokogawa reserves all rights to this software, including but not limited to all property rights, ownership rights, and intellectual property rights..

Operating Precautions

- You may not be able to continue using this software if your personal computer (hereinafter referred to as the PC) enters standby mode.
Disable standby mode when you use this software.

Overview

This software can be used to configure AQ7277B settings and update the AQ7277B firmware.

System Requirements

PC

A PC that can run Windows 7, Windows 8, or Windows 8.1. The PC must have a CPU that can run the operating system comfortably and a minimum of 1 GB of RAM.

Operating System

Windows 7, Windows 8, or Windows 8.1

Free Hard Disk Space

A minimum of 100 MB of free hard disk space is required to install the software.

Display

Resolution: 1024×768 dpi or higher

Color: 65536 colors or more

Other

If you will use the USB interface to connect the AQ7277B to your PC, you have to install a dedicated USB driver on your PC. You can download the dedicated driver from the following web page:

<https://y-link.yokogawa.com/YL007.po>

Installing and Uninstalling the Remote Controller

Installation Procedure

1. Download the remote controller to your PC from the YOKOGAWA web page (<https://y-link.yokogawa.com/YL007.po>).
2. The file that you download is a compressed file. Use the appropriate software to extract the file to a location on your PC.
This will create an "AQ7277B RemoteController" folder.
3. Double-click setup.exe in the AQ7277B RemoteController folder.
4. Follow the installation wizard instructions to install the software.

When the installation finishes correctly, an AQ7277B RemoteController icon appears on the desktop.



Uninstallation Procedure

1. On the taskbar, click **Start, Control Panel**, and then click **Add/Remove Programs**.
The Add or Remove Programs dialog box appears.
2. Click **Change or Remove Programs**, and then select "AQ7277B RemoteController" from the list of currently installed programs.
3. Click **Remove**.

Connecting the AQ7277B to Your PC

Using the USB Interface to Connect the Devices

1. Download the USB driver, “YKMUSB,” to your PC from the YOKOGAWA web page (<https://y-link.yokogawa.com/YL007.po>).
2. Follow the instructions in the USB driver’s installation manual to install the USB driver.
3. Connect a USB cable to the AQ7277B type B USB port.

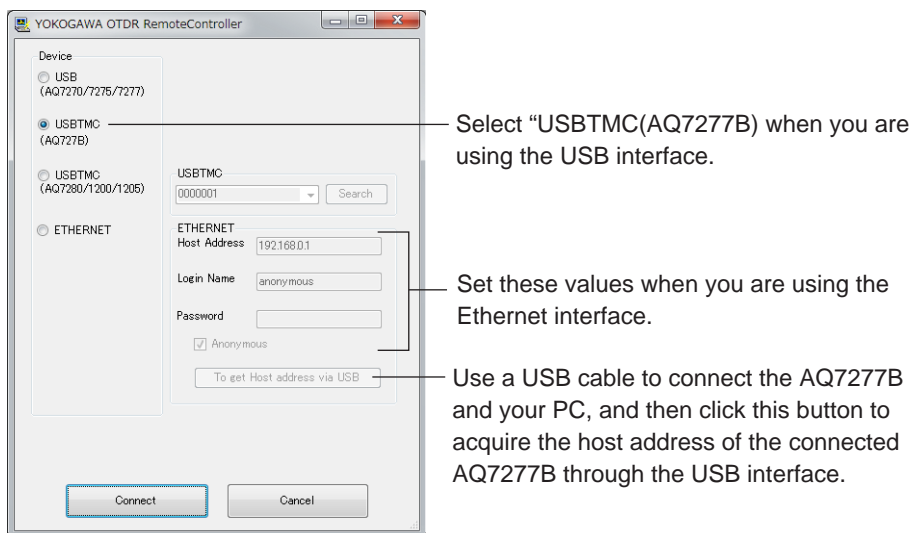
Using the Ethernet Interface to Connect the Devices

1. Connect a UTP (Unshielded Twisted-Pair) or STP (Shielded Twisted-Pair) cable that is connected to a hub or other network device to the 100BASE-TX port on the AQ7277B.

The Ethernet address settings are not configured when you purchase the AQ7277B. Use a USB cable to connect your PC to the AQ7277B, and then configure the network settings.

Starting the Software and Selecting the Interface

1. Double-click the **AQ7277B RemoteController** icon.
The remote controller starts, and the Remote Controller dialog box appears.
2. Select the interface that you want to use. The first time that you configure the settings after you purchase the AQ7277B, select **USB**.



- **USB interface**

Use the USB interface to connect the AQ7277B to your PC.

- **Ethernet interface**

Use the Ethernet interface to connect the AQ7277B to your PC.

Use a USB cable to connect the AQ7277B and your PC, select **ETHERNET**, and then click **To get Host address via USB** to acquire the host address of the connected AQ7277B.

For details on the Ethernet settings, see the remote controller’s help.

3. Click **Connect**.

A window for configuring the AQ7277B appears.

For details on how to configure the settings, see the remote controller’s help.

Top Screen

Display the OTDR setup menu

Display the File menu

Setting of the display update interval

Display the tool menu

Display the manual or version of the OTDR Remote Controller



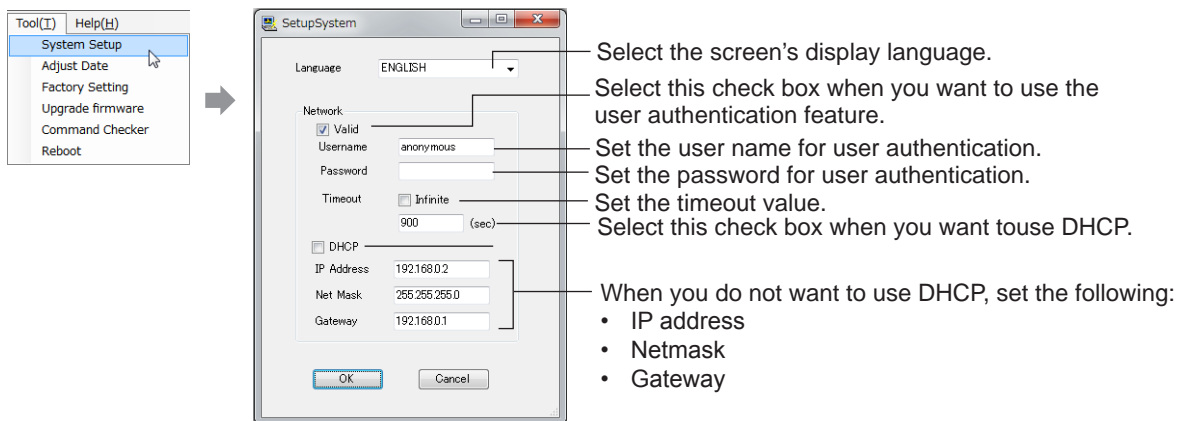
Display the information of the connected AQ7277B

Configuring Network Settings and Selecting the Display Language

You can configure settings such as the Ethernet address, and select the screen's display language.

1. On the remote controller's **Tool** menu, click **System Setup**.

The SetupSystem dialog box appears.



2. After you finish configuring the settings, click **OK**.

A dialog box asking you to confirm that you want to restart the AQ7277B appears.



3. Click **Yes**.

The settings are applied to the AQ7277B, and the AQ7277B restarts.

4. When the Remote Controller dialog box appears, click **Connect**.

The information in the remote controller window is updated.

Network

Setting the User Name and Password

User authentication is required to access the AQ7277B through the Ethernet interface.

To use the user authentication feature, select the **Valid** check box, and set the AQ7277B user name and password.

- User name.....Set the user name using up to 15 characters. The default setting is “anonymous.”
- Password.....Set the password using up to 15 characters.

Note

- The AQ7277B terminates the connection if there is an error in the user authentication process.
 - You do not need to enter a password when the user name is set to “anonymous.”
-

Setting the Timeout Value

If the AQ7277B is not accessed within the time limit specified by this value, the AQ7277B automatically terminates the connection with the PC.

If you do not want to set a timeout value, select the **Infinite** check box.

Configuring the TCP/IP Settings

If you will not use DHCP, you must specify the following TCP/IP settings.

- IP address
- Netmask
- Gateway

Note

For details about the network that you intend to connect the AQ7277B to, contact your network administrator.

Display Language

The display language that will be used on AQ7277B setup screens can be selected from the Language list.

Note

You cannot change the display language that is used in the remote controller menus and dialog boxes.

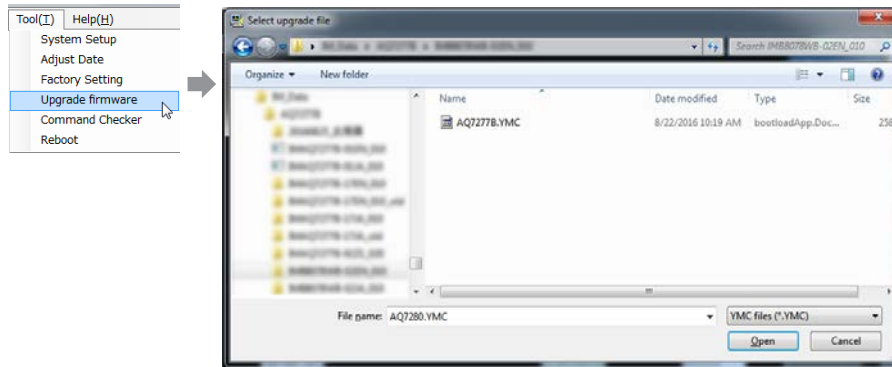
Updating the Firmware

This section will explain how to update the AQ7277B firmware.

1. Download the updated program file from the YOKOGAWA web page (<https://y-link.yokogawa.com/YL007.po>), and extract the file to a location on your PC.

2. On the remote controller's **Tool** menu, click **Upgrade firmware**.

The Select upgrade file dialog box appears.



3. Select the program file that you extracted, and click **Open**.

The update process begins. The progress bar in the Upgrade dialog box displays the progress of the update process. When the update process finishes, the AQ7277B is restarted.

4. Click **OK**.

The information in the remote controller window is updated.

Note

- The program file name is AQ7277B.YMC.
 - If the update process fails, the following message is displayed.
Updating of the main program failed
Confirm that the program file was downloaded correctly, and then perform the update process again.
 - To view the firmware version, click **Product Information icon** (to display the Top Menu.) Then view the **Product Information** item.
-