

1. Contents of the Package

The following items are included in the package. If some items are missing or otherwise inconsistent with the contents description, please contact the dealer from which you purchased them.

Name	Quantity	Note
Control Toolkit for LabVIEW Setup Disk	1 piece	Media: CD-ROM
This manual	1	

2. User's Manual

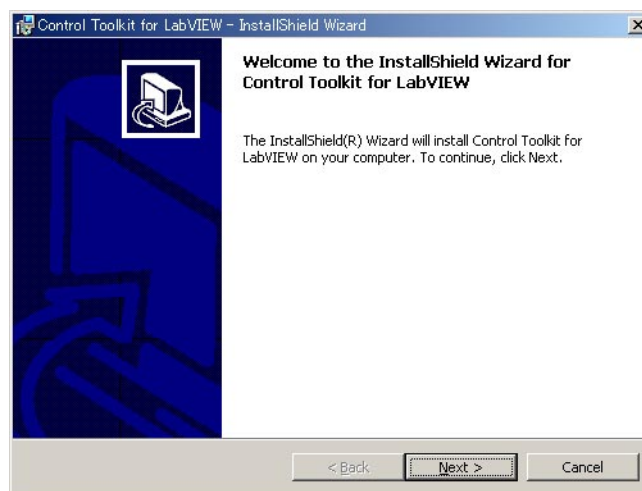
This package does not include a printed user's manual. Please refer to the electronic manual (IM707746-61E.pdf) found in the root directory of the Control Toolkit for LabVIEW Setup Disk (CD-ROM). Adobe Acrobat Reader (3.0 or later) is required for viewing the electronic manual.

3. Installing the Control Toolkit for LabVIEW

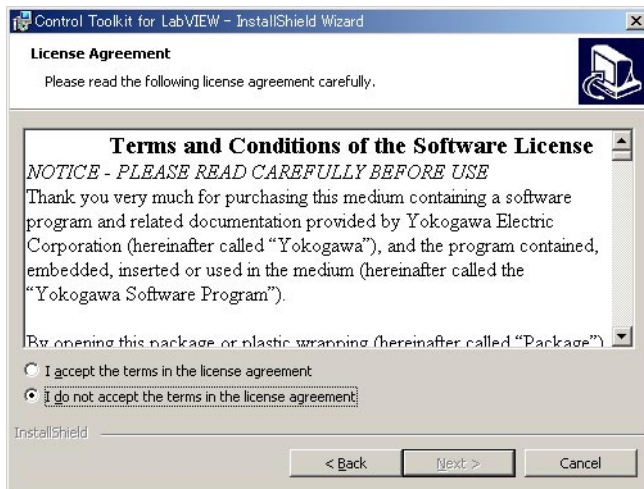
OSs that the Control Toolkit for LabVIEW supports: Microsoft Windows 95/98/Me, Window NT 4.0, Windows 2000 Pro, and Windows XP Professional/Home Edition.

The WE7000 Control Software and the WE Control API Vol.1 must be installed before installing the "Control Toolkit for LabVIEW."

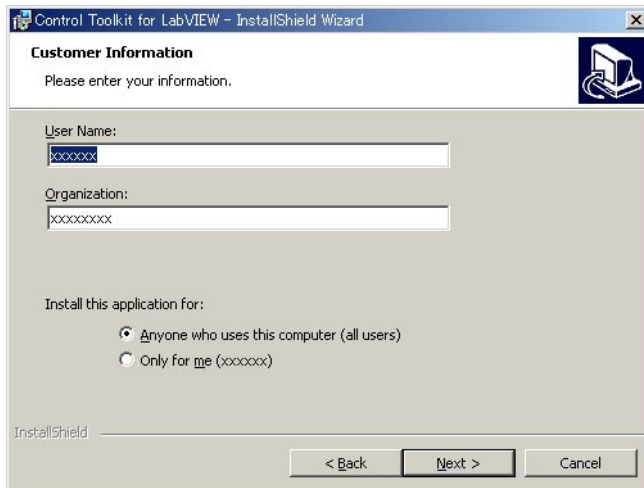
1. Start Windows.
2. Insert the "Control toolkit for LabVIEW" setup disk into the CD-ROM drive. An installer automatically starts and the following dialog box opens. If the program does not start automatically, choose Start > Run, then type setup.exe in the Name box and click **OK**. The following dialog box appears. Click **Next**.



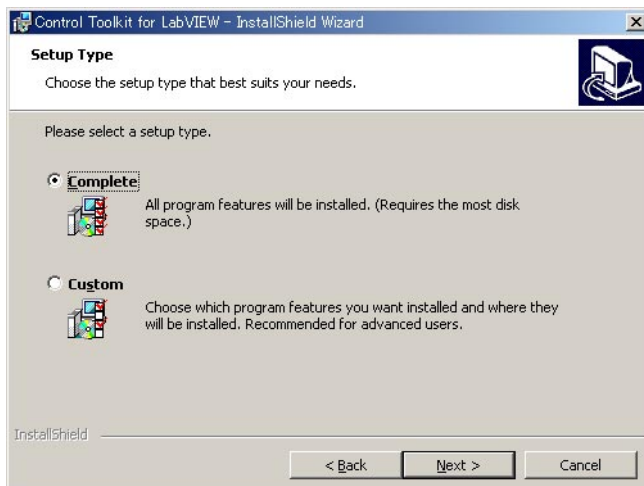
3. The following dialog box appears containing license agreement information. Confirm the license agreement, click the I accept the terms in the license agreement option button, and click Next.



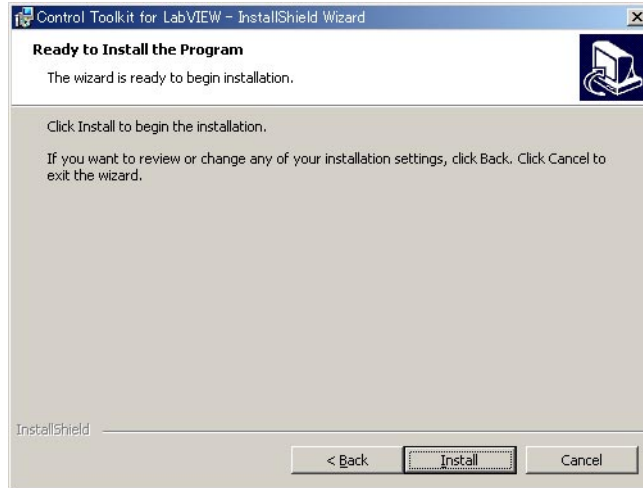
4. The following dialog box appears for registering the name and the organization of the user. After entering the appropriate information into each box, click Next.



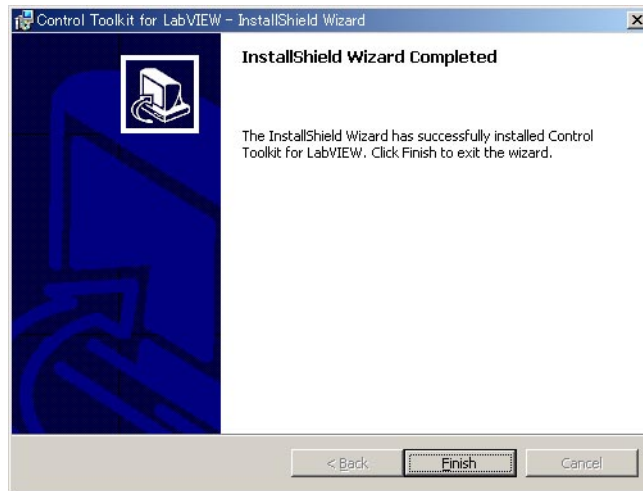
5. A dialog box appears for you to confirm the start of the installation. To proceed with the default installation (Complete), click Next. To select which components to install, or to change the installation destination, choose the Custom option then click Next. A dialog box appears confirming that you wish to begin installation.



-
6. Click Install. The installation starts and a dialog box appears indicating the progress of the installation.



7. A dialog box appears notifying you that the installation has been completed. Click Finish.



Note

If you installed LabVIEW to a directory other than the default directory or if you installed a version other than Version 6i, change the installation destination for the Control Toolkit for LabVIEW accordingly.

4. Development Environments Supported

National Instruments LabVIEW 6i (6.0) or later

5. A List of Files Included

When you install the Control Toolkit or LabVIEW, the “addons\YKWETool” directory is created under the “vi.lib\ directory under the directory in which LabVIEW is installed (C:\Program Files\National Instruments\LabVIEW6 by default for LabVIEW6i), and the toolkit files are copied to the directory.

In addition, the WE measurement instrument driver is copied to the “instr.lib” directory under the “vi.lib\ directory under the directory in which LabVIEW is installed (C:\Program Files\National Instruments\LabVIEW6 by default for LabVIEW6i).

```
[YKWETool]
IM707746-61E.pdf           User's manual
dir.mnu
Station Setup.vi
YKWE.ini
WEexample.llb Sample program for the toolkit
[A]
dir.mnu
[DIGITIZE]
dir.mnu
AIDGTZR.llb           Digitizer VI
AIDtzExa.llb         Sample program
[OSC]
dir.mnu
AIOOSC.llb           Oscilloscope VI
AIOSCExa.llb        Sample program
[OTHER]
dir.mnu
[ACCEL]
dir.mnu
AIACC.llb           Accelerometer VI
AIACCExa.llb       Sample program
[STRAIN]
dir.mnu
AISTRAIN.llb       Strain VI
AISTRExa.llb      Sample program
[THERMO]
dir.mnu
AITHERMO.llb       Thermometer VI
AITrmExa.llb      Sample program
[AO]
dir.mnu
AO.llb           Analog output VI
AOExempl.llb    Sample program
[COUNTER]
dir.mnu
[COUNTER]
dir.mnu
COUNT.llb     Counter VI
COUNTExa.llb   Sample program
[TIMING]
dir.mnu
TIM.llb        Timing VI
TIMExa.llb    Sample program
[DIO]
dir.mnu
[DIO]
dir.mnu
DIO.llb       Digital I/O VI
DIOExa.llb   Sample program
[PIO]
dir.mnu
PIO.llb      Pattern I/O VI
PIOExa.llb  Sample program
[INITIAL]
dir.mnu
Initial.llb Initialize VI
[OTHER]
dir.mnu
[UTILITY]
dir.mnu
Utility.llb Utility VI
*.txt     Supplementary explanation
```

Note

If LabVIEW is installed to a directory other than the default directory, change the directory in which the toolkit is installed accordingly.
