

1. Contents of the Package

The following items are included in the package. If some items are missing or otherwise inconsistent with the contents description, please contact the dealer from which you purchased them.

Name	Quantity	Note
WVF File Access Toolkit for MATLAB Setup Disk	1 piece	Media: CD-ROM
This manual	1	

2. User's Manual

This package does not include a printed user's manual. Please refer to the electronic manual (IM707713-61E.pdf) found in the root directory of the WVF File Access Toolkit for MATLAB Setup Disk (CD-ROM). Adobe Acrobat Reader (3.0 or later) is required for viewing the electronic manual.

3. Supported Development Platforms

The MathWorks, Inc. MATLAB 6.1 (R12.1) or 6.5 (R13)

4. Installing the WVF File Access Toolkit for MATLAB

OSs that the WVF File Access Toolkit for MATLAB supports: Microsoft Windows 95/98/Me, Window NT 4.0, Windows 2000 Pro, and Windows XP Professional/Home Edition.

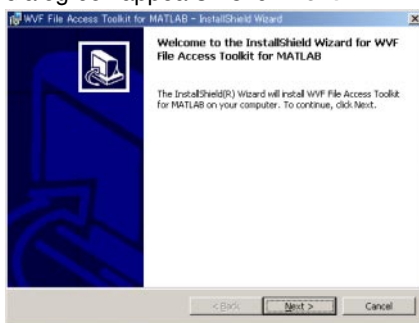
WVF File Access API (Model 707712) or WE Control API (Model 707741) must be installed before you install the WVF File Access Toolkit for MATLAB.

1. Start Windows.

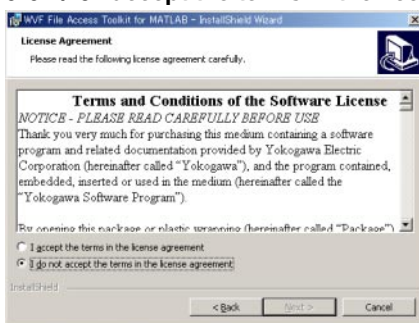
Note

When installing the tool kit on Windows NT 4.0, Widows 2000 Pro, or Windows XP, log onto Windows using the user name "Administrator" or a user name with administrator privileges and then install the tool kit.

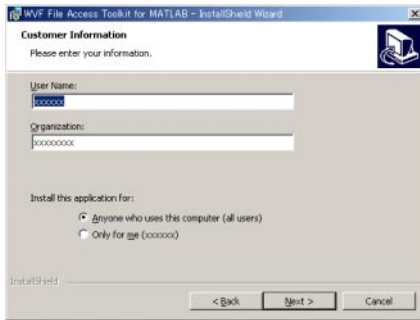
2. Insert the "WVF File Access Toolkit for MATLAB" setup disk into the CD-ROM drive. An installer automatically starts and the following dialog box opens. If the program does not start automatically, choose Start > Run, then specify setup.exe in the disk1 directory of CD-ROM to Name and click OK. The following dialog box appears. Click **Next**.



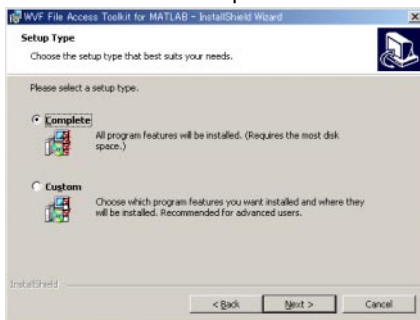
3. The following dialog box appears containing license agreement information. Confirm the license agreement, click the **I accept the terms in the license agreement** option button, and click **Next**.



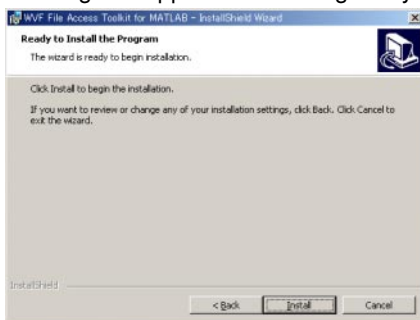
- The following dialog box appears for registering the name and the organization of the user. After entering the appropriate information into each box, click **Next**.



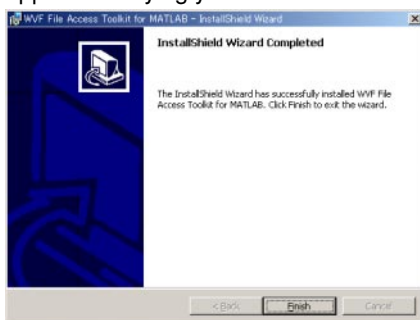
- A dialog box appears for you to confirm the start of the installation. To proceed with the default installation (Complete), click **Next**. To select which components to install, or to change the installation destination, choose the Custom option then click **Next**.



- A dialog box appears confirming that you wish to begin installation. Click **Install**.



- The installation starts and a dialog box appears indicating the progress of the installation. A dialog box appears notifying you that the installation has been completed. Click **Finish**.



Note

If you installed MATLAB to a directory other than the default directory, change the installation directory of the WVF File Access Toolkit for MATLAB.

5. A List of Installed Files

The installed files are in toolbox\YOKOGAWA\WE7000 in the directory of MATLAB.

IM707713-61E	User's Manual
*.dll	Mex function for WVF file access
*.m	Sample Program
WVFreadme*.txt	Information about the sample programs