

1. Contents of the Package

The following items are included in the package. If some items are missing or otherwise inconsistent with the contents description, please contact the dealer from which you purchased them.

Name	Quantity	Note
WVF File Access API Setup Disk	1 piece	Media: CD-ROM
This manual	1	

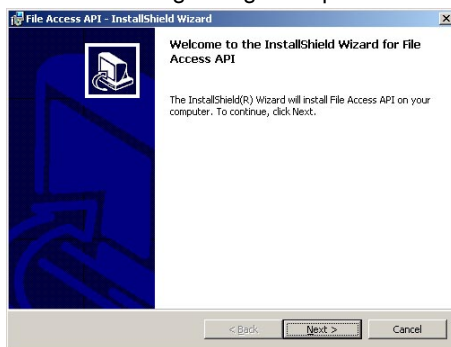
2. User's Manual

This package does not include a printed user's manual. Please refer to electronic manuals in PDF format (WeDP_E.pdf (IM707712-61E) in the installation directory displayed after setup the software. Adobe Acrobat Reader (3.0 or later) is required for viewing the electronic manual.

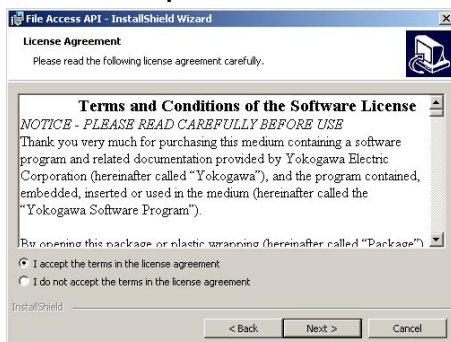
3. Installing the WVF File Access API

OSs that the WVF File Access API supports: Microsoft Windows 95/98/Me, Window NT 4.0, Windows 2000 Pro, and Windows XP Professional/Home Edition.

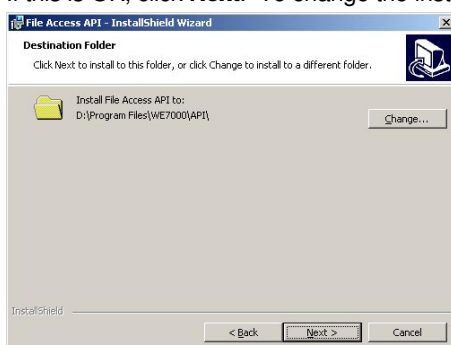
1. Insert the WVF File Access API Setup Disk into your PC's CD-ROM drive. An installer automatically starts and the following dialog box opens. Click **Next**.



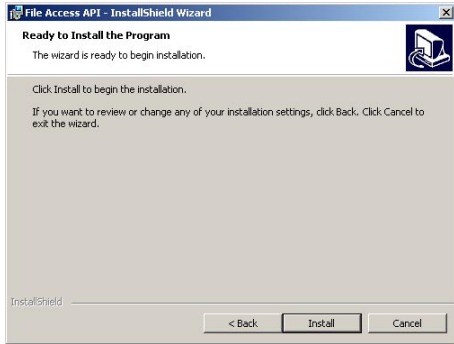
2. The following dialog box opens containing license agreement information. Confirm the license agreement, click the **I accept the terms in the license agreement** option button, and click **Next**.



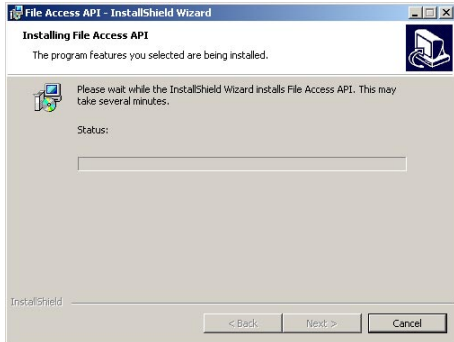
3. Specify the installation destination. The default installation destination is set to "C:\Program Files\WE7000\API\." If this is OK, click **Next**. To change the installation directory, click **Change**, select the directory, and click **Next**.



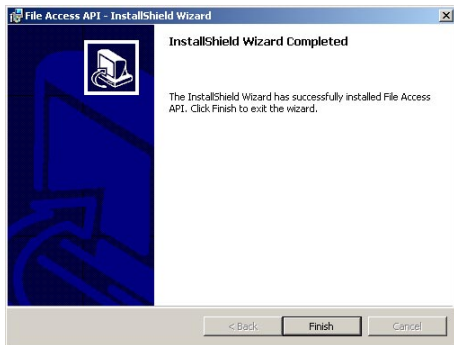
4. A dialog box appears confirming that you wish to begin installation. Click **Install**.



5. The installation starts and the following dialog box opens indicating the progress of the installation.



6. A dialog box opens notifying you that the installation has been completed. Click **Finish**.



4. A List of Files Included

File Name	Description
WeAscii.bas	File containing definitions of constants for Visual Basic
WeDP.bas	File access function API definition file for Visual Basic
*.dll	DLL files for the WVF File Access API
WeAscii.h	File containing definitions of constants for Visual C++
WeDP.h	File access function API definition file for Visual C++
WeDP_E.pdf	WVF File Access Online Manual (Adobe Acrobat Reader 3.0 or later required for opening the file.)
WeFileAccess	DLL file for the .Net development platform

5. Supported Development Platforms

- Microsoft Visual Basic 5.0, 6.0, and .Net
- Microsoft Visual C++6.0 and .Net
- Microsoft Visual C#.Net