

Foreword

This user's manual describes the procedure for upgrading the version of the SL1000 acquisition software and the firmware of the SL1000 Data Acquisition Unit. Please be sure to follow this user's manual when upgrading the version of the SL1000 acquisition software or firmware.

Trademarks

- Microsoft, Windows, and Windows XP are trademarks or registered trademarks of Microsoft Corporation in the United States and/or other countries.
- Adobe, Acrobat, and PostScript are trademarks or registered trademarks of Adobe Systems Incorporated.
- The company and product names used in this manual are not accompanied by the trademark or registered trademark symbols (TM and ®).
- Other company and product names are trademarks or registered trademarks of their respective companies.

Disclaimers

Yokogawa will accept no responsibility for damage caused directly or indirectly as a result of use of the product.

Before Starting the Version Upgrade

Decompress the downloaded file. The compressed file contains the following.

- Setup.exe (SL1000 acquisition software installer)
- Firmware folder (SL1000 unit firmware)
- SL1000 folder (SL1000 acquisition software related files)
- Xviewer folder (Xviewer related files)
- Recovery folder (SL1000 unit recovery tool)
- SL1000 software release notes -***_***.txt (where *** is the version of the acquisition software or firmware)
- User's manual

CAUTION

- When upgrading the version of both the SL1000 acquisition software and the firmware, you must first upgrade the SL1000 acquisition software.
 - Files in the Firmware and Recovery folders are not installed on the PC by the acquisition software installer. If needed, save them on the PC prior to the version upgrade by copying the folders to the PC.
-

Procedure for Upgrade

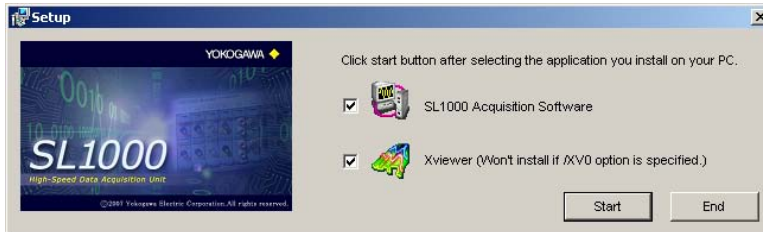
The following is the procedure for performing the version upgrade.

Note

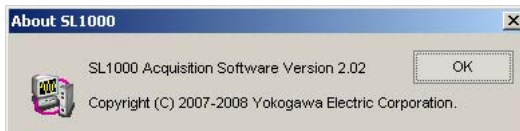
The version number displayed below is only an example. Be sure to check that your upgraded version number is correct.

Acquisition Software Version Upgrade

1. Run the decompressed Setup.exe file. Select the application(s) to install, then start the version upgrade. See the SL1000 acquisition software user's manual (720120-61E) for the installation procedure.

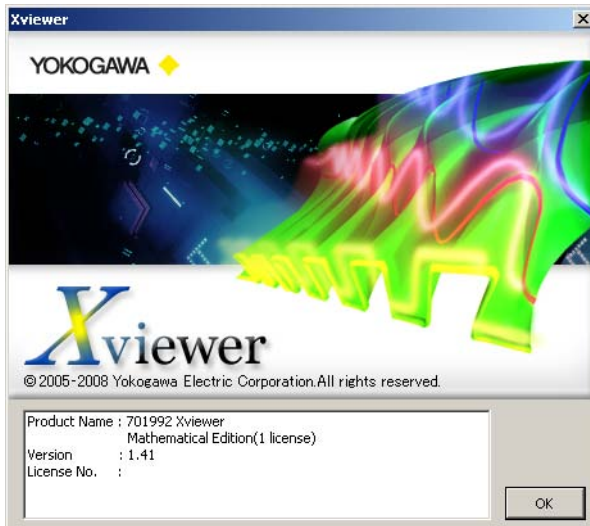


2. When installation is finished, start the SL1000 acquisition software. On the **Help** menu, click **About**, then check that the latest version of the SL1000 acquisition software is displayed.



3. If you installed Xviewer (other than /XV0), click **About Xviewer** on Xviewer's Help menu, then check that the latest version of Xviewer is displayed.

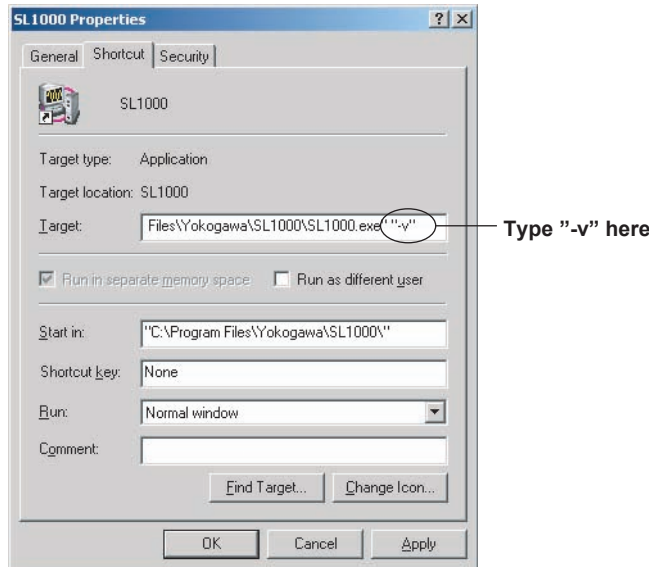
This completes the version upgrade of the SL1000 acquisition software.



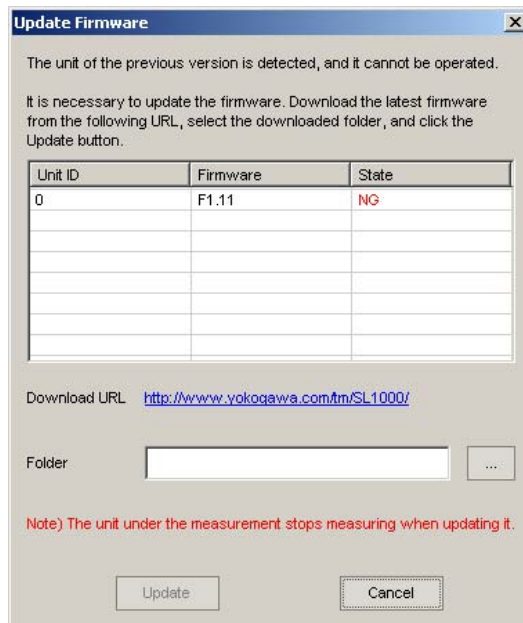
SL1000 Data Acquisition Unit Firmware Version Upgrade

To perform a version upgrade of the SL1000 Data Acquisition Unit (hereinafter, *the SL1000*) firmware, you must connect the PC onto which the version upgrade software was downloaded to the SL1000 via USB or Ethernet. Therefore, the PC used for the version upgrade must already have the SL1000 acquisition software installed on it.

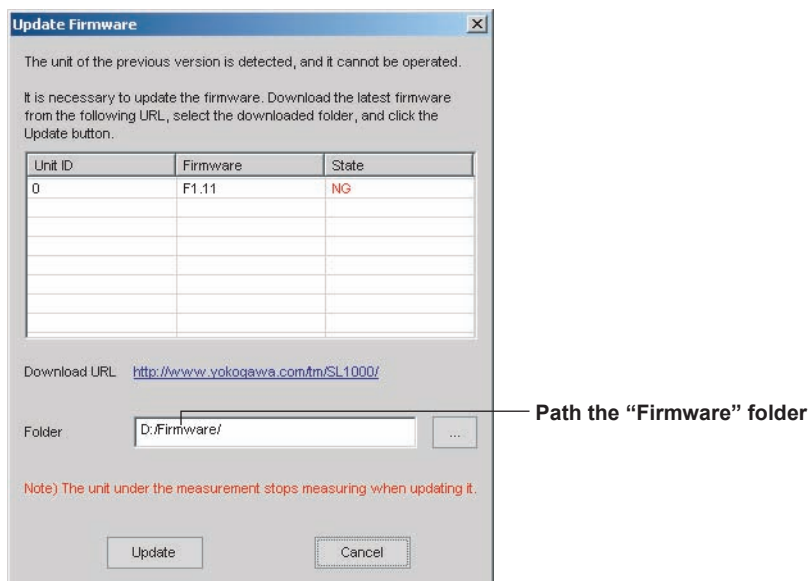
1. Right-click the shortcut to the SL1000 acquisition software located on the desktop, click **Properties**, then click the **Shortcut** tab. At the end of the string in the Target box, type the "-v" (version upgrade) startup option (including quotation marks).



2. Connect the PC and the SL1000 via USB or Ethernet, then start the SL1000 acquisition software. See the SL1000 acquisition software user's manual (720120-61E) for the connection procedure.
3. If the versions of the SL1000 and the SL1000 acquisition software do not match (NG is displayed if the combination does not allow control), the screen below is displayed allowing you to upgrade the firmware version. If this screen does not appear, skip to step 6.

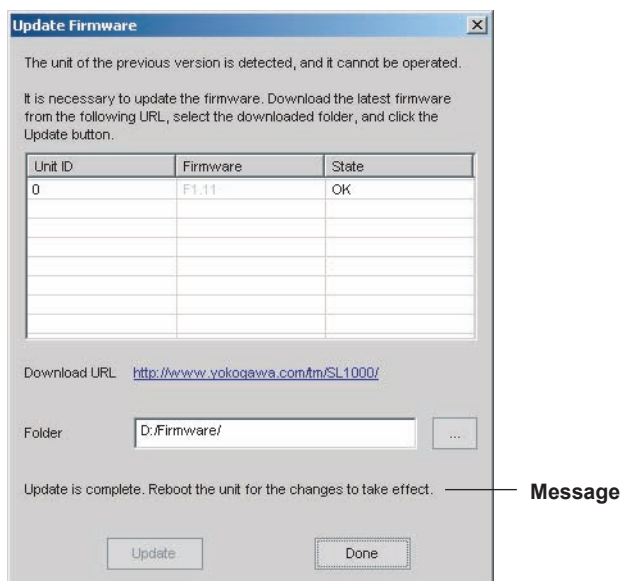


4. Click the browse button, and select the Firmware folder that was downloaded and decompressed.



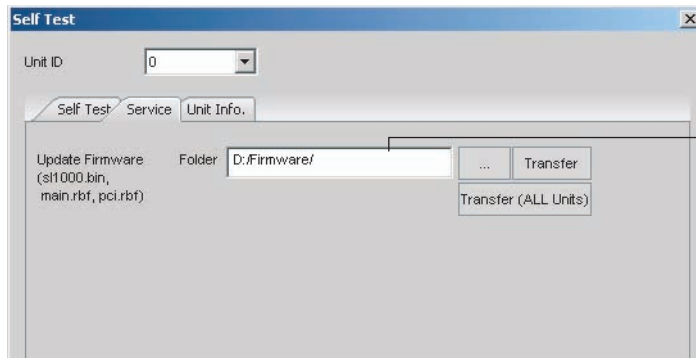
5. Click the **Update** button. The firmware version upgrade executes. During the upgrade, be sure not to turn OFF the power to the main unit. If the version upgrade is successful, the state changes to OK, and the message in the figure is displayed. Turn OFF the power to the main unit, then restart it (if for some reason the restart is not successful, please see the firmware upgrade user's manual in the Recovery folder).

After the unit restarts, proceed to step 8.



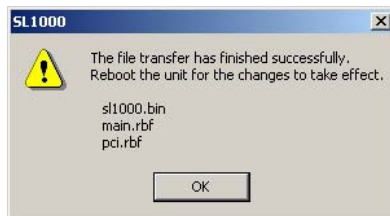
If the Version Mismatch Screen in Step 3 Is Not Displayed

6. Open the Self Test screen from the **Environment** menu, then click the **Service** tab. Click the browse button, and select the Firmware folder.



Path the "Firmware" folde

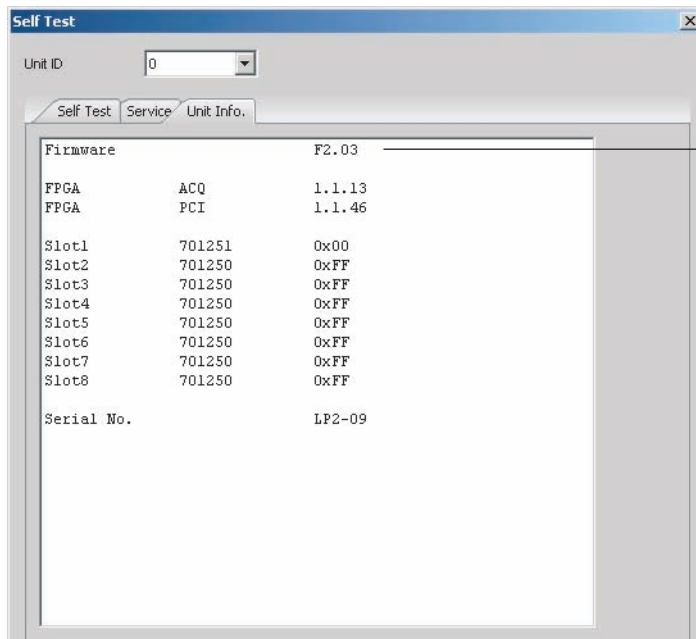
7. Click the **Transfer** button to execute the firmware version upgrade. During the upgrade, be sure not to turn OFF the power to the main unit. If the version upgrade is successful, the messages in the figure below appears. Turn OFF the power to the main unit, then restart it (if for some reason the restart is not successful, please see the firmware upgrade procedure manual in the Recovery folder).



Checking the Version

8. Close the SL1000 acquisition software. To ensure that firmware is not mistakenly overwritten, remove the "-v" startup option that was added in step 1.

Start the SL1000 acquisition software. Open the Self Test screen from the **Environment** menu, then click the **Unit Info** tab. Check that the firmware is of the latest version.



Firmware version