

Yokogawa Corporation of America

2 Dart Road
Newnan, GA 30265

Phone: 800-258-2552
<http://tmi.yokogawa.com/>



April 22, 2009

Dear Valued Customer,

In regards to how to sanitize the Yokogawa SL1000 High-speed Data Acquisition System, we are pleased to provide you with the following information and procedure regarding: SL1000 Internal Hard Drive, SL1000 Waveform Acquisition Memory, Setup File Storage and SL1000 Acquisition Software and Xviewer (on PC).

A. Technical Information – SL1000 Memory

The following types of memory are used in the SL1000:

- Internal Hard Drive: Non-Volatile SRAM
- Waveform Acquisition Memory: Volatile RAM
- Setup File Data Storage: Non-Volatile SRAM
- Acquisition Software (installed on PC): Non-Volatile SRAM (PC's Hard Drive)

1) Internal Hard Drive Details:

Because non-volatile memory is used to store data permanently, the data is available even after you cycle power to the SL1000. To erase the data from the internal hard drive would require formatting the hard drive using the SL1000 Acquisition Software.

2) Waveform Acquisition Memory Details:

Because volatile memory is used to acquire the waveform, the waveform data cannot be saved permanently on the SL1000. Simple cycling of power will erase all acquisition memory (all waveform data). However, this can also be erased by simply performing a hardware initialization using the SL1000 Acquisition Software.

3) Setup File Data Storage Details:

Since setup file data is stored in the non-volatile memory, it can still be recalled after cycling power to the SL1000. To erase the setup file data from the memory, you will have to perform a hardware initialization using the SL1000 Acquisition Software.

4) Acquisition Software and Xviewer Details:

Because the non-volatile memory in the PC is used to store data permanently, access to the software files and folders is available even after you cycle power to the PC. To guarantee complete sanitization of the PC, It is necessary to format the PC's hard drive completely. This will guarantee complete sanitization of the PC, including removal of all software installation files and folders; all data that may be stored in other folders (by different users) on the PC and all Windows based registry entries.

Yokogawa Corporation of America

2 Dart Road
Newnan, GA 30265

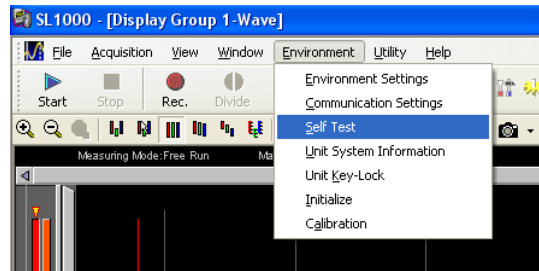
Phone: 800-258-2552
<http://tmi.yokogawa.com/>



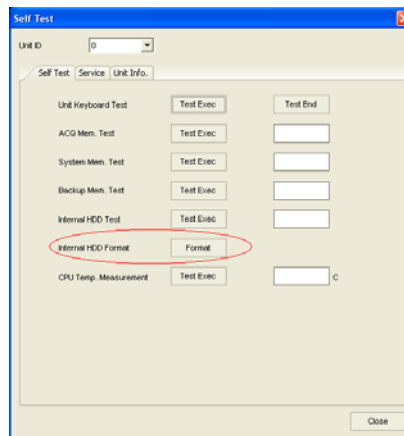
B. Procedure to sanitize all elements of SL1000

1) Sanitizing Internal Hard Drive

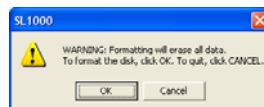
- You will need the SL1000 Acquisition Software to sanitize the internal hard drive of the SL1000.
- Launch the SL1000 Acquisition Software.
- Go to the Environment\Self Test menu as shown below.



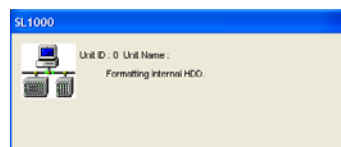
- Next click on the "FORMAT" button near "Internal HDD Format" option.



- Click OK to confirm formatting.



- Click OK, once formatting is complete.



- Click the "Close" button on the Self Test window.
- All data on the SL1000 internal hard drive is erased. The SL1000 Internal Hard Drive is sanitized.

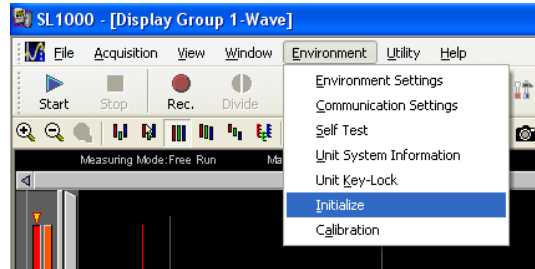
Yokogawa Corporation of America

2 Dart Road
Newnan, GA 30265

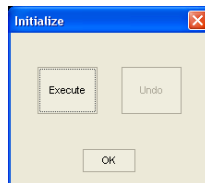
Phone: 800-258-2552
<http://tmi.yokogawa.com/>



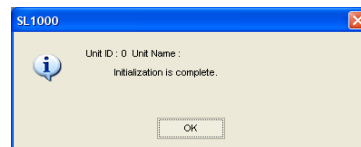
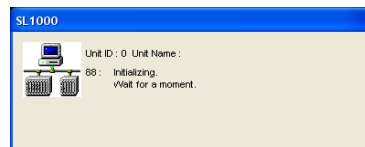
- 2) Sanitizing Waveform Acquisition and Setup File Data Storage Memory
 - You will need the SL1000 Acquisition Software to sanitize both the Waveform Acquisition Memory and the Setup File Storage Memory.
 - Launch the SL1000 Acquisition Software.
 - Go to the Environment\Initialize menu as shown below.



- Click 'Execute'



- Click OK to complete.



- With the above step you have successfully sanitized the SL1000 Acquisition Memory & Setup Data Storage Memory

Yokogawa Corporation of America

2 Dart Road
Newnan, GA 30265

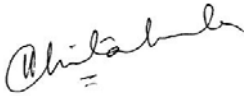
Phone: 800-258-2552
<http://tmi.yokogawa.com/>



- 3) Sanitizing PC for installed SL1000 Acquisition Software & Xviewer
 - o Format the PCs hard drive for complete sanitization. This will guarantee removal of all software components and data stored by the SL1000 Acquisition software. Furthermore, it will also guarantee the removal of any Windows based registry entries from the systems.

Please let me know if you have any further questions.

Thank you,



Yusuf Chitalwala
Applications Engineer,
Data Acquisition Instruments
Test and Measurement Division