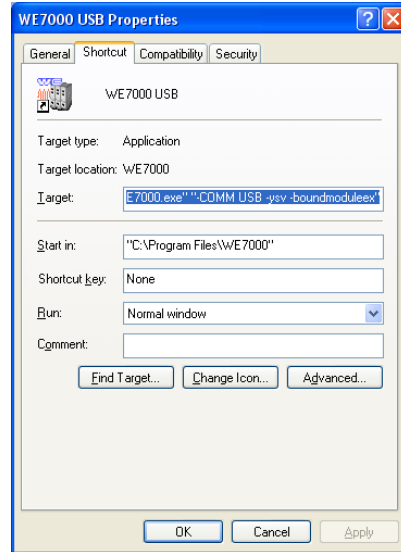
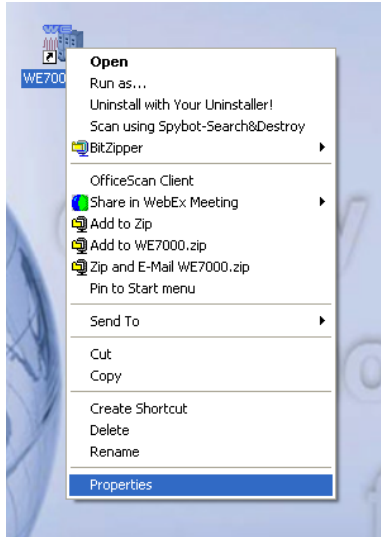


## Loading Setup Files across different versions of WE Control Software:

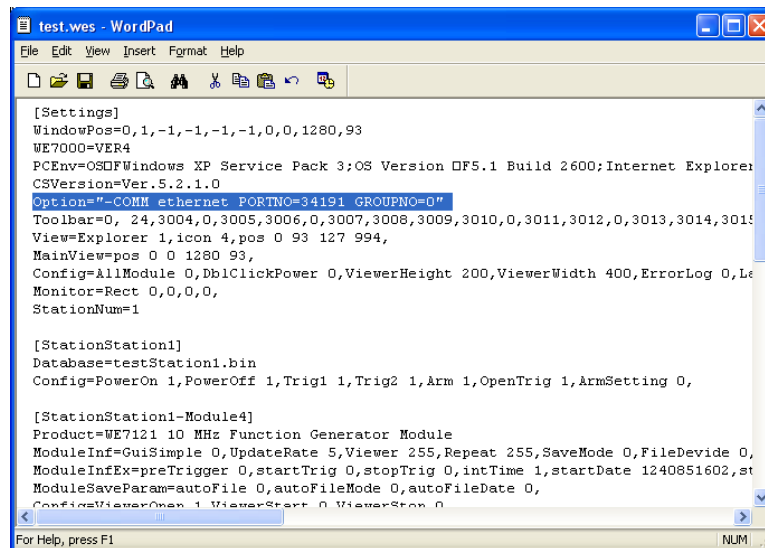
You can load setup files that were saved in previous versions (4.x.x.x) with the most current version (5.x.x.x). The only thing you have to be careful about is the following:

- 1) Confirm if WE Control Software can find the Station before loading "\*.wes".
- 2) Please compare the following start-up options in two locations:
  - a) The start-up parameters in "Target" field of "WE7000.exe" shortcut properties  
"-comm ethernet PORTNO=34191 GROUPNO=0"



- b) The option parameters in the "\*.wes" file (the "\*.wes" file can be opened using Wordpad)

Option="-comm ethernet PORTNO=34191 GROUPNO=0"



c) Make sure both these options are the same, if not change the "Option=" in the "\*.wes" file to match the "WE7000.exe" short-cut properties "Target" field.

d) The "\*.wes" file also mentions the modules & their slot locations that were installed on the station when the setup file was saved. Please make sure that the modules are in the correct location.

e) With the above steps you should be able to load "\*.wes" file successfully across different version of the WE. If problem still persists, then the only other problem could be the network setup of the PC does not match the WE station.

**Loading Old WE Setup Files with latest hardware firmware:**

Even if your hardware has been upgraded to the latest firmware(s), any version of the WE Control Software and setup files should work. As long as you verify the above start-up options and module slot locations are the same, the old "\*.wes" files should work.

Yusuf H Chitalwala  
Applications Engineer  
Yokogawa Corporation of America