

This manual describes the steps to update the firmware of the 2558A AC Voltage Current Standard (hereafter referred to as the 2558A). When updating, be sure to follow the instructions in this manual.

Disclaimers

By downloading and installing this software, the customer agrees to all of the following disclaimers.

- Yokogawa bears no liability for any problems occurring as a result of downloading or installing this software.
- Yokogawa bears no responsibility for any damage caused directly or indirectly as a result of using this software.
- This software is provided free of charge, however no unlimited warranty against software defects exists, nor is any claim made that the product is free of all defects whatsoever. Also, Yokogawa is not always able to repair defects ("bugs") in, or respond to questions or inquiries about this software.
- Yokogawa reserves all rights to this software, including but not limited to all property rights, ownership rights, and intellectual property rights.

Trademarks

- Microsoft and Windows are registered trademarks or trademarks of Microsoft Corporation in the United States and/or other countries.
- Adobe and Acrobat are registered trademarks or trademarks of Adobe Systems Incorporated.
- Other company and product names are registered trademarks or trademarks of their respective holders.
- In this manual, the ® and TM symbols do not accompany their respective registered trademark or trademark names.

Preparations before Updating

Installing the USB Driver

Connect the 2558A to a PC with a USB cable, and update the firmware. To communicate with USB interface, you need the YOKOGAWA USB driver (YKMUSB) on your PC. You can download it from our website. For the installation procedure, see the manual that is provided with the driver.

<https://tmi.yokogawa.com/library/documents-downloads/software/usb-drivers/>

Required driver: YKMUSB

Checking the Firmware Update Tool

Download the 2558A firmware from the 2558A product page on our website to any folder on your PC.

<https://tmi.yokogawa.com/solutions/products/generators-sources/standard/2558a-ac-voltage-current-standard/>

Required file: 2558A firmware

Unzip the downloaded firmware file, and check that the following files including this manual are in the folder.

- BootloaderDownloadApp.exe (update program)
- BootloaderDownloadApp.ini (configuration file)
- bootload.dll, tmctl.dll, YKMUSB.dll (DLL files)
- 2558A.firm (the instrument's firmware data file)
- 2558AUpdateIM_EN.pdf (firmware update manual (this manual))

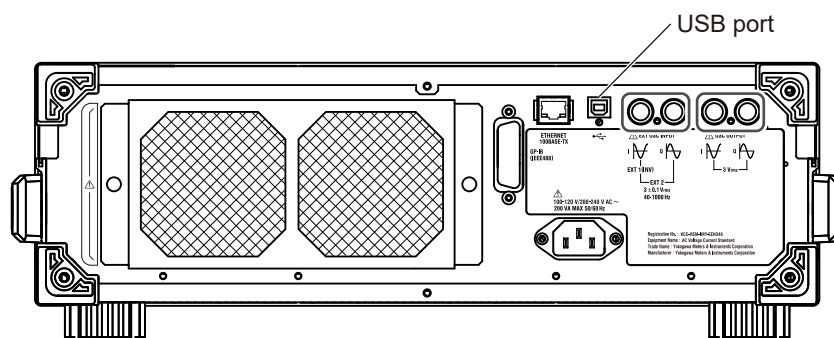
Note

When you update the firmware, the 2558A setup parameters will be reset to their factory default values. If necessary, back up the setup parameters before updating.

Firmware Update Procedure

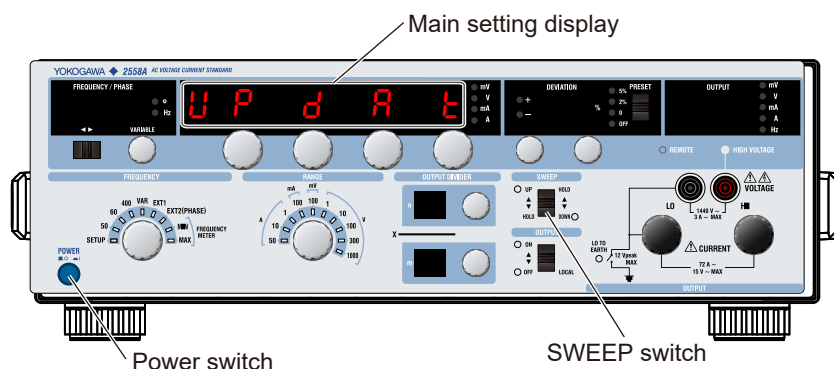
Operating the 2558A

1. Using a USB cable, connect the USB port for PCs on the rear panel to the PC.



2. While pushing the **SWEEP** switch up, turn on the power switch.

Keep pushing the **SWEEP** switch up until "UPDAT" is displayed on the main setting display. The instrument will start in firmware update mode.

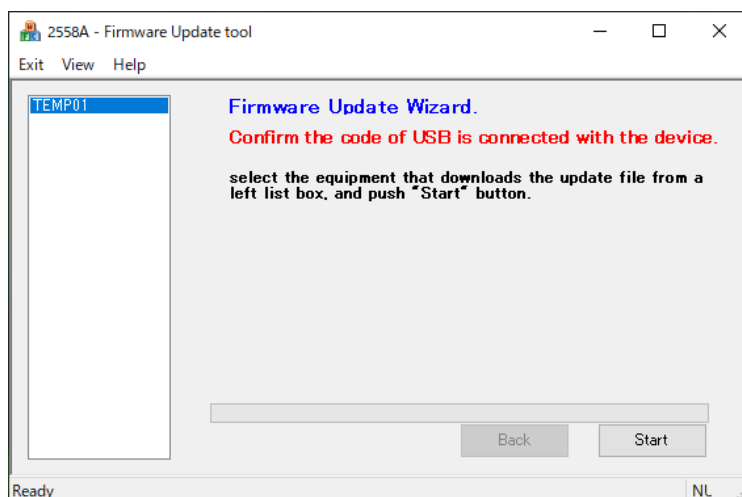


Note

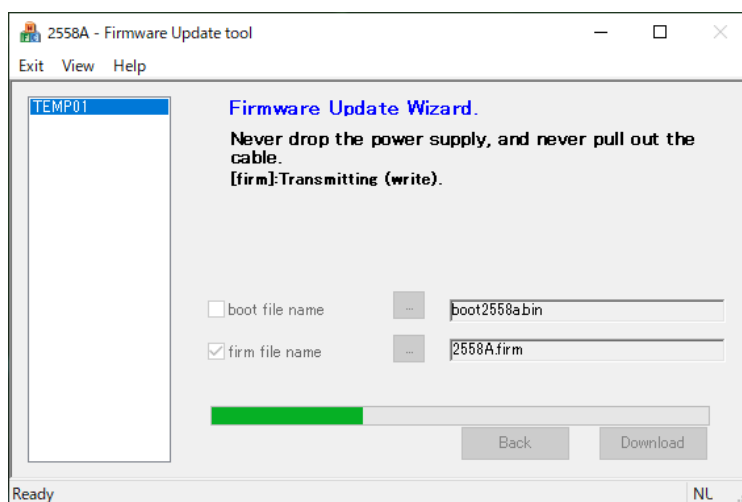
You can update the firmware on only one 2558A at a time. Confirm that only a single 2558A running in firmware update mode is connected to the PC.

Operating the Firmware Update Tool

3. Confirm that your PC recognized the 2558A in Device Manager on your PC.
4. Run the update program (BootloaderDownloadApp.exe) in the folder.
The firmware update tool will begin.
5. Confirm that “TEMP01” is displayed on the left side of the tool screen, and click Start.
The firmware updating will begin.

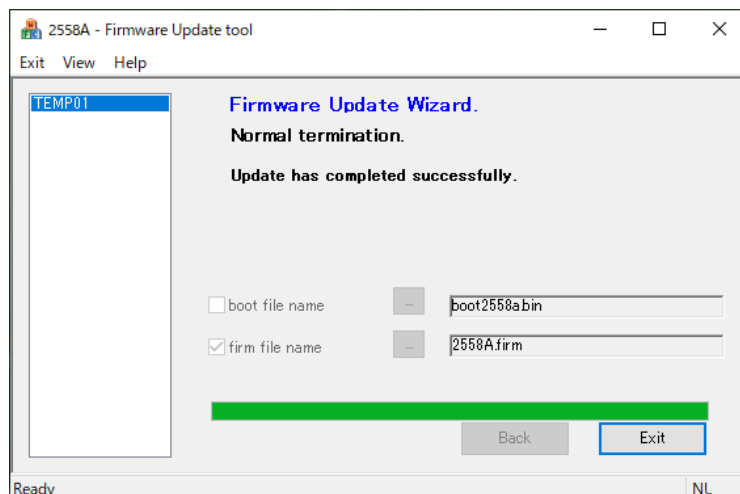


6. A progress bar shows the progress.
Do not remove the USB cable or turn off the 2558A until updating is finished.



Update Completion and 2558A Restart

7. When updating completes successfully, the following screen will be displayed. Click Exit to finish updating.



8. Turn off the 2558A and turn it on again.

It takes about 10 seconds for the instrument to restart after updating. Do not turn off the power until the main setting display changes from “2558A”.

Checking the 2558A Firmware Version

9. Turn the **FREQUENCY** dial to select SETUP.
10. Turn the **VARIABLE** dial to select INFO.
11. Turn the main setting dials to select FIRM.
12. Check that the firmware version has been updated.

