

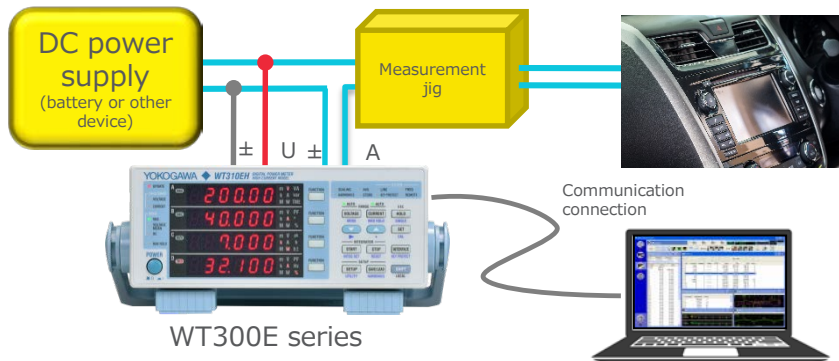
# Car Audio Shipping Verification Test (DC Measurement from Low to High Currents)

## WT300E series

Car audio equipment for automobiles works using the DC power from the car battery. Generally, the current values for DC-driven equipment can be measured using a digital multimeter (DMM), but because DMMs only have a measurable range of up to approximately 3 A to 5 A, they are unable to evaluate high-output car audio equipment with built-in power amplifiers and other devices. Also, some recent equipment has AC components that are superimposed on DC drive waveform, and in these cases, an ammeter and power meter capable of both AC and DC measurement are required. The WT300E series Digital Power Meter is capable of measurement from low current in the mA range to high current up to 20A or 40A and provides high-accuracy measurements of both DC and AC current and power values for use in verification testing at shipping. The data update cycle can be as short as 100 ms, and various communication functions can be used to enable high-speed data collection for achieving shorter takt times in production.

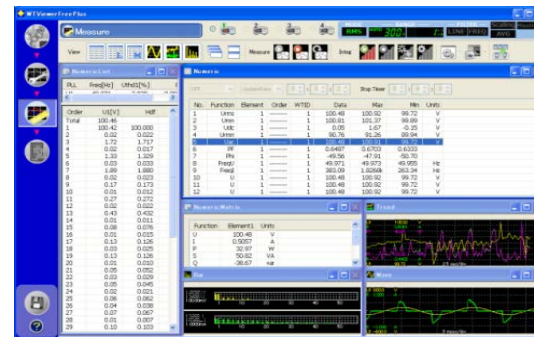
\*WTViewerFreePlus (bundled free software) can be used to enable simple data collection (up to four units for models with the same specifications can be connected).

 [Product details](#)



Capable of measuring power and current from microcurrent to large current at speeds of up to 100 ms.

■ Data collection using free software  
\*Harmonic measurement option (/G5) is required for waveform measurement.



WTViewerFreePlus

\*Enables communication with a PC using USB, GP-IB, Ethernet, or RS-232 connection.