

---

# User's Manual

# 92015

DMMアプリケーション インストールマニュアル  
Application Software Installation instructions

---

この取扱説明書は、いつでも使用できるよう大切に  
保管してください。

Store this manual in a safe place for future reference.

This manual contains instructions how to install the DMM Application for 92015.

---

## 1. Introduction

---

### ● Interface

This instrument is equipped with a USB interface.

Specifications of USB : Ver.1.1 (Reference)

Following can be done by USB communication.

- Downloading files in the internal memory of the instrument to a PC.
- Real-time data reception

### ● Software

DMM Application (supplied CD-ROM)

For Models:TY720, TY710, TY530, CA450(\*)

(\*):When using CA450, functions of “Receives DMM save mode data” and “Receives DMM logging mode data” are not valid.

For more information on Communication of CA450, see Section 6. Communication of User's Manual (IM CA450-EN).

### ● System Requirements

- |                                  |  |
|----------------------------------|--|
| • OS (Operation System)          | Windows 10(32/64bit)<br>Windows 11       |
| • Memory                         | 64Mbyte or more                          |
| • Display                        | 1024 x 768 dots, 65536 colors<br>or more |
| • HDD (Hard-disk space required) | 10Mbyte or more                          |

### ● Communication Commands

For details on commands, refer to the manual (PDF) in the CD-ROM.

### ● Trademark

- Windows® is a registered trademark of Microsoft in the United States.

---

## 2. Installation of “DMM Application” Software

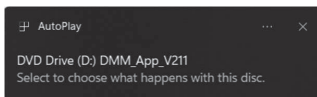
---

(1) Followings shall be checked before installing this software.

- To prepare your system to install this software, please close all open programs.
- Be sure NOT to connect the main unit DMM with the a USB until install is completed.
- Install shall be done with Administrator right.

(2) Insert the supplied CD-ROM in your PC's CD or DVD Drive.

Then following pop-up will appear at the upper right on the screen. Click on this box.



(3) Click and select “Run install.exe” when the following box appears.

If User Account Control dialog box appears, click “Yes”.

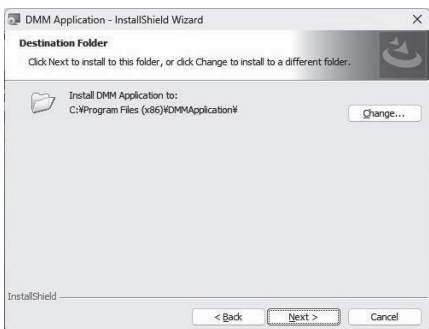
If neither (2) nor (3) appear, run “install.exe” form the CD.



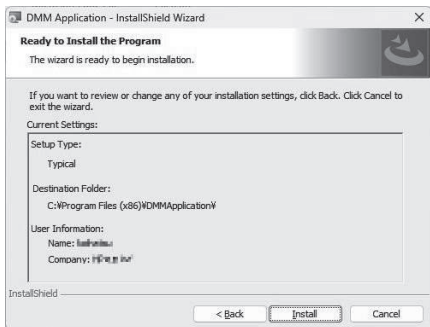
(4) When the following window appears, click “Next”.



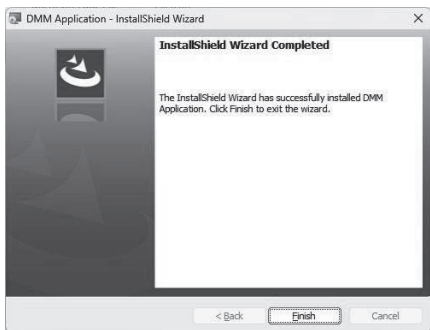
(5) Click “Next”.



- (6) Confirm the information on installation, and then click “Install” to start an installation.



- (7) Click “Finish” when “InstallShield Wizard Completed” dialog box appears.



### How to un-install the PC Software:

Display the app from the Windows Start menu. (In Windows 11, select [All apps].)

Right-click on “**DMM Application**” and select “Uninstall” to remove it.

---

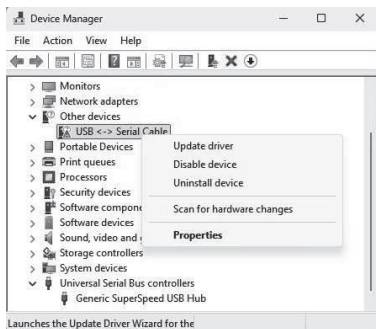
## 3. USB Driver Installation

---

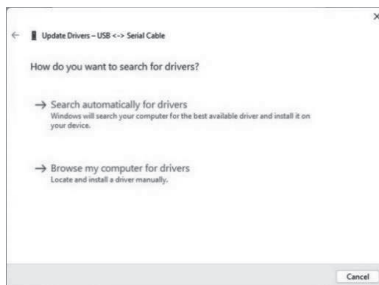
### 3-1 Installation of USB Driver

- (1) Connect MODEL 92015 and your PC with the USB cable supplied with the instrument.
- (2) Right-click on the Windows Start menu and select “Device Manager”.
- (3) Click “Other devices” and then right-click on “USB <-> Serial Cable”.

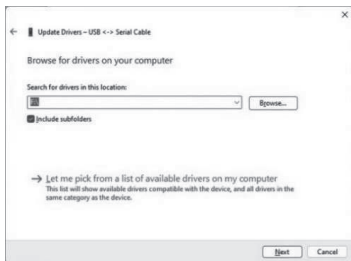
Then click “Update driver”



- (4) Select “Browse my computer for drivers”.



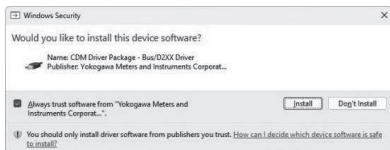
(5) Check the box for “Include subfolders”, and then click “Browse ...”.



(6) Select the CD or DVD drive in which you inserted the supplied CD-ROM.



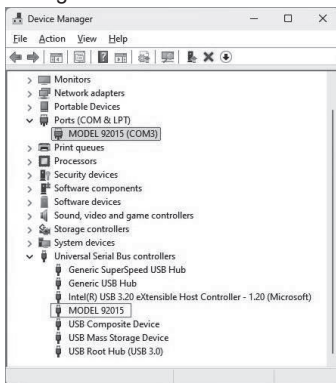
(7) When the “Would you like to install this device software?” screen appears, check the “Always trust software from ‘Yokogawa Test & Measurement Corporation’.” check box and click “Install”.



- (8) Install is completed when the wizard says "Windows has successfully updated your drivers". Click "Close".



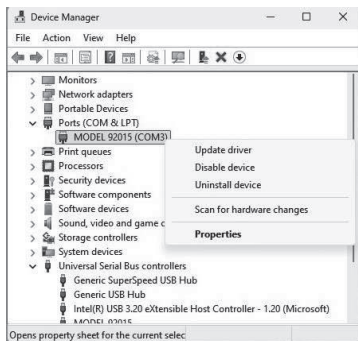
- (9) Finally, please confirm that "MODEL 92015" is present in both "Ports (COM & LPT)" and "Universal Serial Bus controllers" in Device Manager.



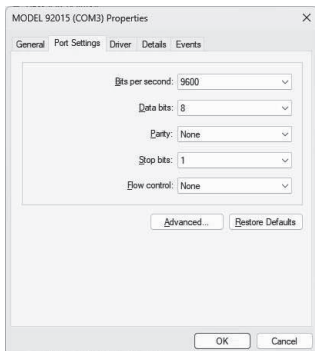
※If "USB <-> Serial Cable" is listed under "Other devices" again, please repeat steps (3) to (8).

### 3-2 Check and change COM Port Number

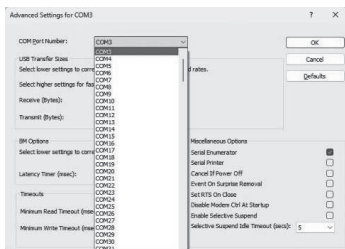
- (1) Check the COM Port number assigned to MODEL 92015 in “Ports (COM & LPT)” in the “Device Manager” (right-click on the Windows Start menu to select).



- (2) To change the COM Port number, right-click on “MODEL 92015” under “Ports (COM & LPT)” and open “Properties”, Select the “Port Settings” tab and click “Advanced...”.



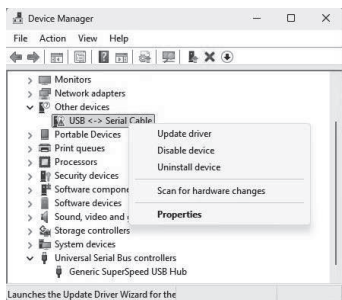
Select any number (COM1 to COM16) for COM Port Number, and then click “OK”.



## ※USB Driver Un-installation

When the installation of the USB driver is interrupted and re-installation cannot be done, follow the procedure below and delete the existing driver, and then install it again.

- (1) Connect your PC and the instrument with the USB cable.
- (2) Right-click on the Windows Start menu and select "Device Manager".
- (3) Right-click on the "MODEL 92015" item in "Other Devices" or "Ports (COM & LPT)" or "Universal Serial Bus controllers".  
(If the installation was not completed correctly, ⚠ "USB <-> Serial Cable" may be displayed instead of "MODEL 92015".)
- (4) Click "Uninstall" to uninstall the USB driver.



- (5) Disconnect the USB cable from the PC and then reconnect it.
- (6) When "Found New Hardware Wizard" window appears, follow the procedures described in "USB Driver Installation" and install the driver.

---

## 4. Start of “DMM Application”

---

Click the “**DMM Application**” icon on the desktop, or display the apps from the Windows Start menu (select “All Apps” in Windows11), and click “**DMM Application**” to launch it.

Then the Main Window for the “DMM Application” appears. Select the COM Port No.

Clicking “File” and then “Exit” or “[X]” box at the upper right of the window quits the program.

Refer to PDF User’s Manual in the supplied CD-ROM for the DMM Application operating procedure.

