
**User's
Manual**

**Model 735070
AQ7932
OTDR Emulation Software
Operation Manual**

Introduction

Thank you for your purchasing of this AQ7932 OTDR Emulation Software.
This user's manual describes the basic operating procedures of AQ7932.
Use this manual together with the AQ7932's help facilities.

Notes

The contents of this manual describe AQ7932 OTDR Emulation Software Ver.5.03.
IF you are using another version of the software, the operating procedures or the figures given in this manual may differ from the actual software.
The contents of this manual are subject to change without prior notice as a result of continuing improvements to the program's performance and functions.

Operating Environment (Software / Hardware)

■ Recommended Operating Environment of the PC

Item	Description
OS	Windows 7, Windows 8, Windows 8.1, Windows 10
Excel	Microsoft Excel 2000 or later (When the XLS file output function is used.)
PC	Clock speed An environment where the OS comfortably operates Capacity of the HDD At least a free hard disk space of 20 MB is required for installation Capacity of the RAM 128 MB at least (256 MB or more is recommended.) * The printer spooler may take up a large amount of memory during continuous printing or report output. If the free disk space become insufficient, the program may not run properly. Display Resolution of 1024 × 768 dots at least Disk drive CD-ROM drive

Trademarks

Microsoft, Windows, Windows 7, Windows 8, Windows 8.1 and Windows 10 are either registered trademarks or trademarks of Microsoft Corporation in the U.S.A. and other countries.

Other company and product names mentioned herein may be the trademarks of their respective owners.

For purposes of this manual, the TM and ® symbols do not accompany their respective trademark names or registered trademark names.

Revisions

First Edition September, 2005

2nd Edition December, 2008

3rd Edition July, 2016

Contents

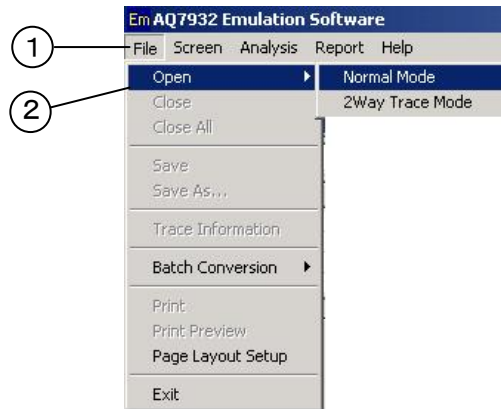
Introduction	i
Notes	i
Operating Environment (Software / Hardware)	i
Trademarks	i
Contents	ii
Chapter 1 Waveform Analysis	1
1-1 Loading the Waveform File	1
1-2 Setting Up the Screen Properties	3
1-3 Analysis with One Waveform (Normal Mode)	4
1-4 Analysis with Two Waveforms (2Way Trace Mode)	6
1-5 Auto Search	8
1-6 Common Setup	10
1-7 Printing	11
Chapter 2 Editing and Saving Data	12
2-1 Changing the Group Index and Inserting Comments on a Section Basis	12
2-2 Label Batch Conversion	13
2-3 SSI Batch Conversion (Multi Core Trace Comparison)	14
2-4 MPZ/SMP Batch Conversion	14
2-5 Saving Files after Converting the File Format by One Operation	15
Chapter 3 Making a Report	17
3-1 Trace Output	19
3-2 Total Table Output	23
3-3 Trace Comparison Output	28
Chapter 4 Troubleshooting	33
4-1 Troubles Related to Waveform Analysis	33
4-2 Troubles Related to Making a Report	33
Chapter 5 Related Software	34
5-1 OTDR Project File Editor	34

Chapter 1 Waveform Analysis

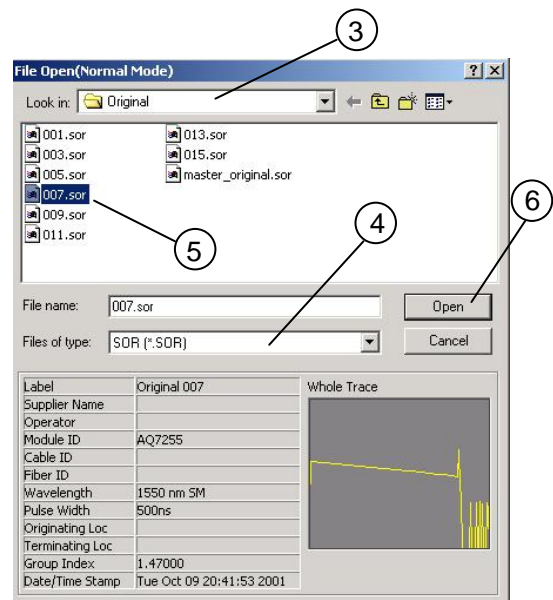
1-1 Loading the Waveform File

◆ Displaying the Waveform

1. Click [File] in the menu.
2. Click [Open] - [Normal Mode].



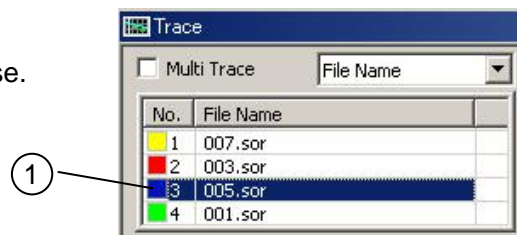
3. Select the folder storing the waveform file you want to display.
4. Select the file type.
(Select the file format of the waveform file you want to display.)
5. Select the file you want to display.
The label, measurement conditions, and the overall view of the selected file will be displayed.
6. Click [Open].
The waveform will be displayed on the trace screen.



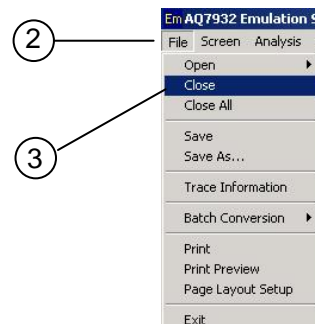
If you want to display another waveform, repeat the steps 1 through 6.

◆ Closing the Displayed Waveform

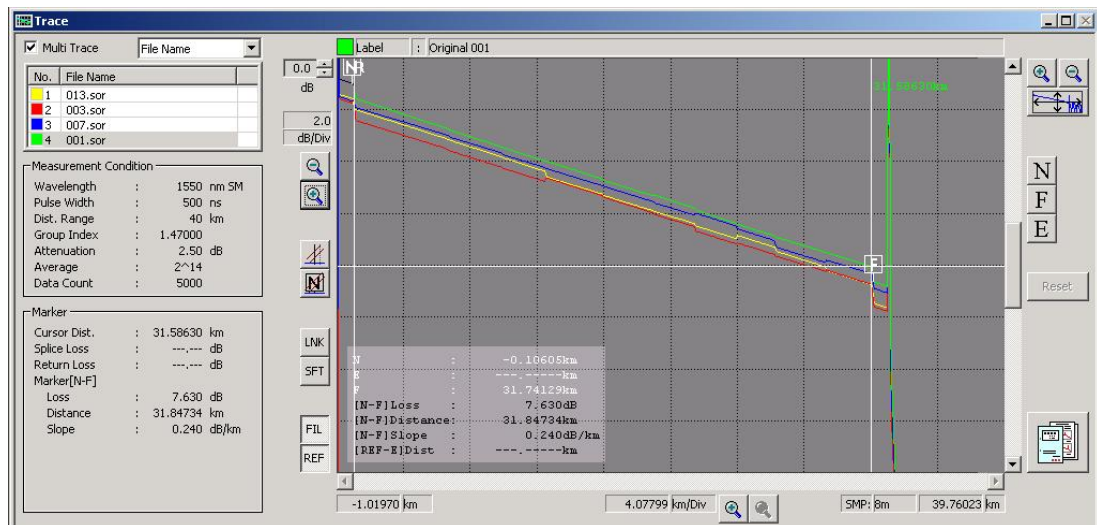
1. Select the waveform file you want to close.



2. Click [File] in the menu.
3. Click [Close].
The selected waveform file will close.
If you want to close all the waveforms currently being displayed, click [Close All].



<Sample Display> Waveform display when two or more number of waveforms have been loaded

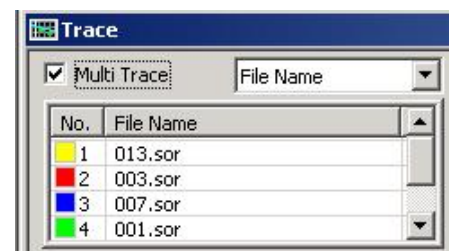


When two or more number of waveforms have been loaded, you can determine to display only the current waveform or all the waveforms on the trace screen.

Mark the [Multi Trace] checkbox.

If a checkmark is placed, you can display two or more number of waveforms on the trace screen.

(Up to eight waveforms can be displayed.)



In the file list area, you can display not only the file name but also the label.



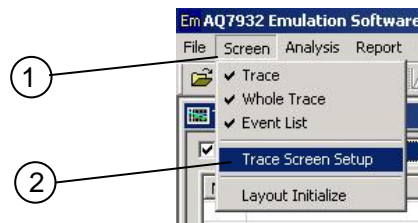
Selectable between file name and label

1-2 Setting Up the Screen Properties

You can change the default setting to the desired one.

If you change the setting, the software starts up with the new setting from the next time on.

1. Click [Screen] in the menu.
2. Click [Trace Screen Setup].

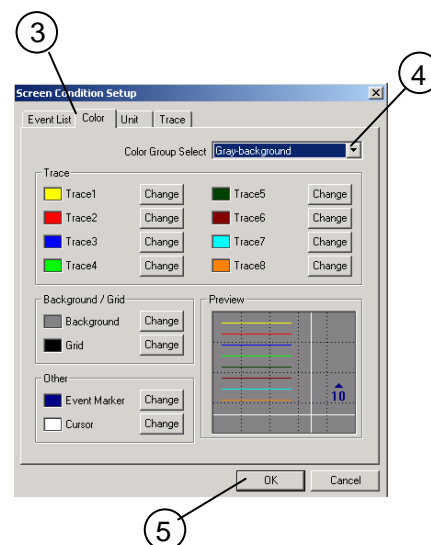


◆ Changing the Color

Example: Changing the background color to white (from the default of gray)

3. Click the [Color] tab.
4. Select [White-background] from the [Color Group Select] pull-down menu.
5. Click [OK].

The background color will change to white.

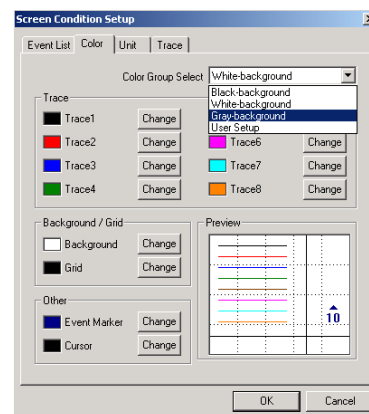


Note

In the color group, there are three default values provided for black, white, and gray backgrounds respectively.

The default trace colors are preset which are suitable for each background.

Furthermore, selecting [User Setup] allows you to change the colors of background and trace individually.



In the same manner, you can change the following items.

For details, see the help facilities of the AQ7932.

(Click [Help] - [Contents] in the menu. [Contents] - [Screen menu] - [Screen setup])

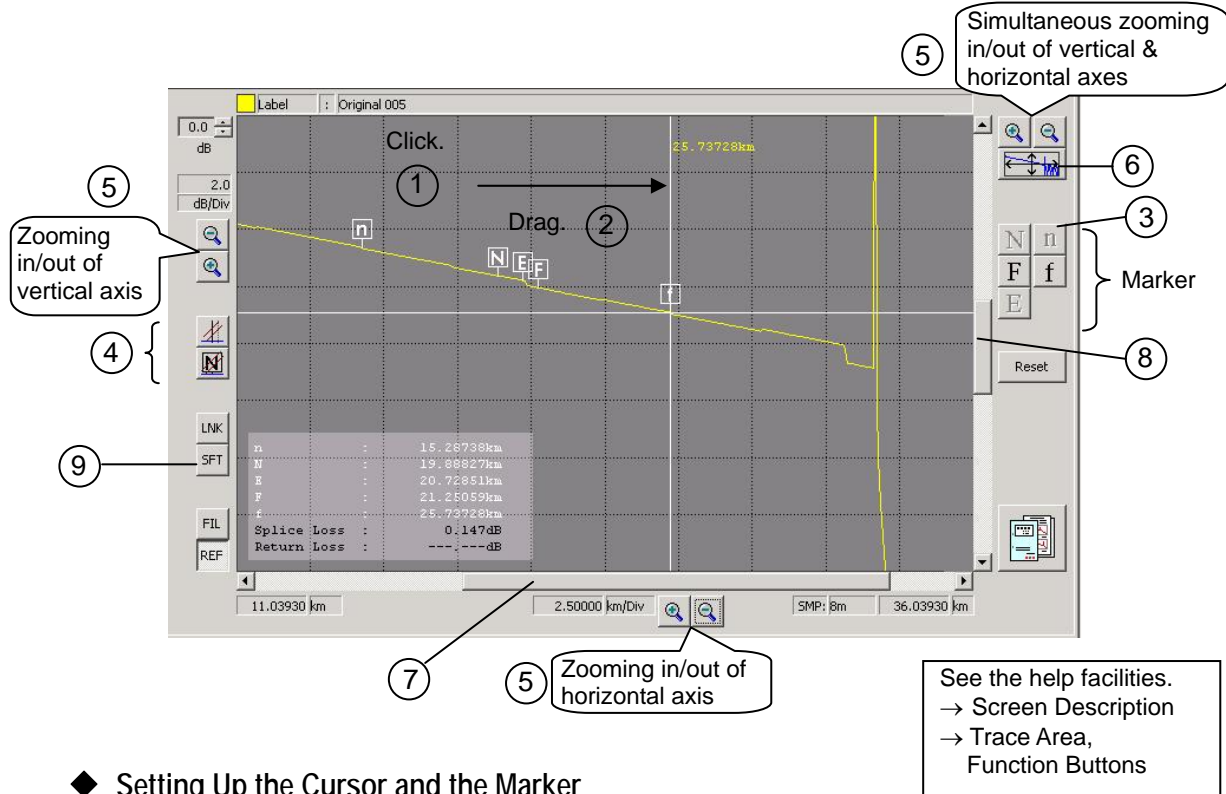
- ◆ Changing the Number of Displayed Digits and the Unit
- ◆ The Shape of the Cursor (Cross or Line), Show/hide the Grid
- ◆ Marker operation type NF, NEF, or nNEF for normal mode.
- ◆ Changing the Item To Be Displayed in the Event List

See the help facilities.
→Contents
→Screen Menu
→Screen Condition Setup



1-3 Analysis with One Waveform (Normal Mode)

This section describes the operations to zoom into the waveform and set up the marker which are necessary to measure the distances and losses.




For the measuring method of them, see [Basic Measurement] of the help facilities.







◆ Setting Up the Cursor and the Marker

1. Click anywhere on the trace waveform.
The cursor appears at the position of the pointer.
2. Click and drag the cursor at the position where you want to display the marker.
(Moving the cursor)
3. Click the button **n**. (Setting up the marker **n**)
In the same manner, set up the markers **N**, **E**, **F**, and **f**.
The results of analysis are displayed in the [marker information area].
4. If you want to delete a cursor or a marker, click  (Cursor Clear) or  (Marker Clear).

◆ Zooming in/out the Waveform

5. Click the button  or . (Zooming in/out with the cursor as the center)
Zooming in/out are performed vertically, horizontally, or in the both directions depending on the button clicked.
6. To initialize the scale, click the button .

◆ Moving the Waveform Display Area

7. Moving along the horizontal axis
Drag the scroll bar at the bottom of the trace screen, or click the button  .
8. Moving along the vertical axis
Drag the scroll bar on the right side of the trace screen, or click the button  .

◆ Displaying the Approximate Line

9. Click the slope fit button .

See the help facilities.
→ Terminology List
→ Slope Fit

◆ Changing the Position of the Marker

The marker **n** is used as an example in the following explanation. The procedures are the same for other markers.

• Operation with a Mouse

1. Move the mouse pointer into the square of the marker **n**.
2. Drag the pointer to the position to which you want to move the marker.
(Left-click the mouse, and the cursor moves to the center of the marker.)
3. Release the left button at the position to which you want to move the marker.
(The marker **n** is set.)

• Operation with a Marker Button

1. Move the cursor to the position to which you want to move the marker.
2. Press the button of the marker you want to move.

See the help facilities.
→ Screen Operations
→ Marker Operation

Note

Markers can move in the range of $n < N < E < F < f$.

(You can call up the cursor by left-clicking the mouse anywhere on the trace screen.)

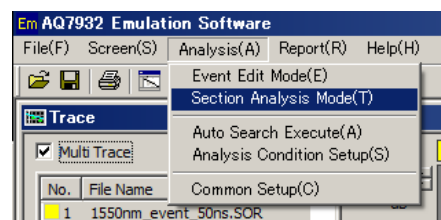
Click the marker. The marker is displayed in red. It is moved indicating that the position of the marker is uncertain. When you release the mouse button, the marker color turns "white". And the marker is fixed on the position.

◆ Section Analysis


Section analysis mode is analyzing the distance, return loss, total loss and loss per distance (dB/km) in a section of your discretion.

1. Click [Analysis] in the menu.
2. Click [Section Analysis Mode].

See the help facilities.
→ Analysis Functions
→ Section Analysis Mode



• Setting Up the Marker

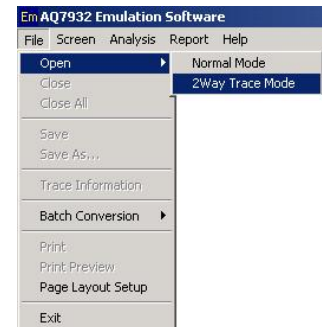
1. Click and drag the cursor at the position where you want to display the marker.
(Moving the cursor)
2. Click the button . (Setting up the marker S)

In the same manner, set up the markers B, and E. The results of analysis are displayed in the [Section Analysis].

1-4 Analysis with Two Waveforms (2Way Trace Mode)

◆ Displaying the Waveforms

1. Click [File] in the menu.
2. Click [Open] and [2Way Trace Mode].
The File Open(2Way Trace Mode) dialog box will appear.



◆ Differential Waveform

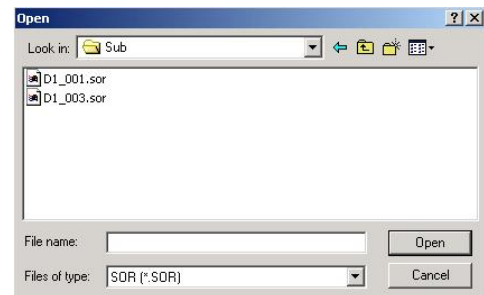
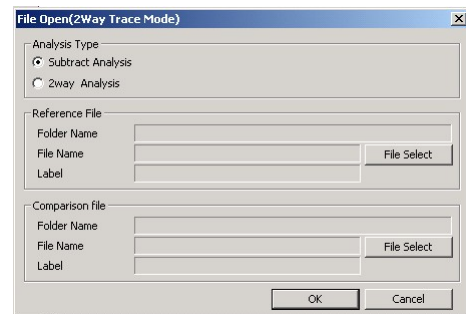
For the two fibers, their waveforms and the difference between them are displayed.

This function is useful for measuring the secular changes of a fiber and similar purposes.

3. Click [Subtract Analysis].

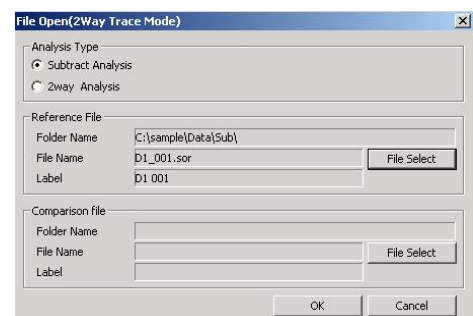
Loading the Waveform File To Be Used as the Reference

4. Click [File Select] in the [Reference File] area.
5. Select the folder storing the waveform file you want to display.
6. Select the file type.
(Select the file format of the waveform file you want to display.)
7. Select the file you want to use as the reference.
8. Click [Open].



Loading the File To Be Compared with

9. In the same manner, click [File Select] in the [Comparison file] area.
Load the file to be compared with.
10. Click [OK].



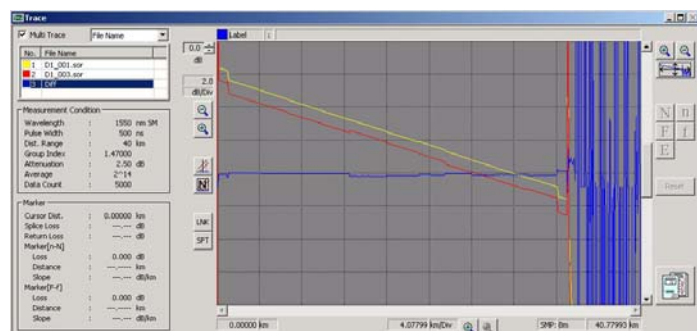
<Sample Display>

Reference file: D1_001.SOR

Comparison file: D1_003.SOR

Diff (Difference):

Comparison file - Reference file



Saving the Difference Data in CSV Format

11. Click [File] in the menu.
12. Click [Save As...].
13. Specify the location to store the file and the file name, and click [Save].

◆ Both-end-composite Waveform

A fiber is measured bidirectionally (in both the original and reverse directions). The reverse-direction waveform is horizontally flipped and displayed on the screen together with the original-direction waveform.

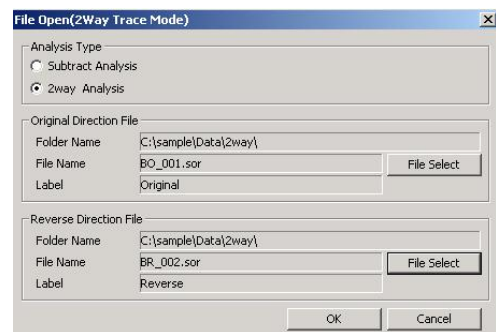
The more correct value of splice loss can be obtained by averaging the splice losses in each event list.

3. Click [2way Analysis].

Loading the Original-direction Waveform Data

4. Click [File Select] in the [Original Direction File] area.

The succeeding steps are the same as those for the differential waveform described on the previous page. See them.



Loading the Reverse-direction Waveform Data

5. Click [File Select] in the [Reverse Direction File] area.
The succeeding steps are the same as above.
6. Click [OK].

<Sample Display>

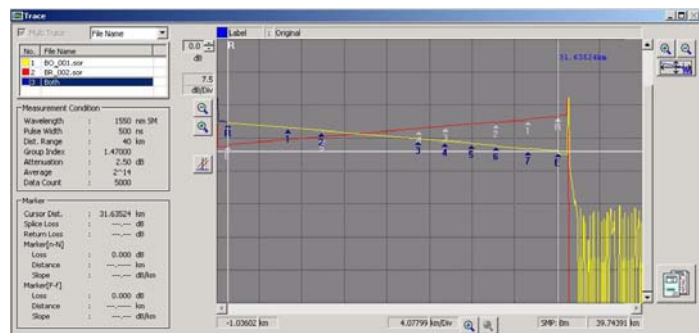
Original-direction file:

BO_001.SOR

Reverse-direction file:

BR_002.SOR

Both: Both waveforms displayed
(Original-direction and
reverse-direction)
(The reverse-direction file is
horizontally flipped and displayed.)



◆ Saving the Event List of Both-end-composite Results in CSV Format

7. Click [File] in the menu.
8. Click [Save As...].
9. Specify the location to store the file and the file name, and click [Save].

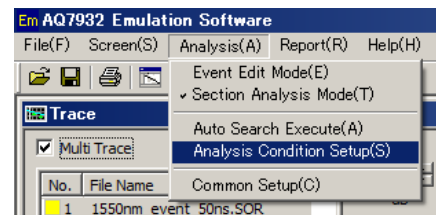
Note

You cannot edit any event during an analysis with two waveforms.

1-5 Auto Search

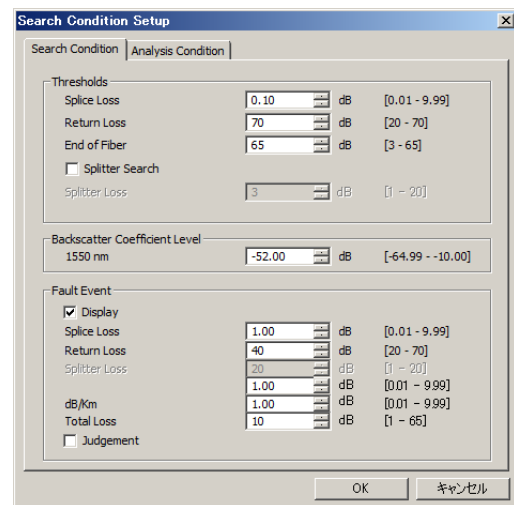
◆ Setting Up the Analysis Conditions

1. Display the waveform you want to analyze.
(You cannot set up the conditions without any waveform displayed on the screen.)
2. Click [Analysis] in the menu.
3. Click [Analysis Condition Setup].



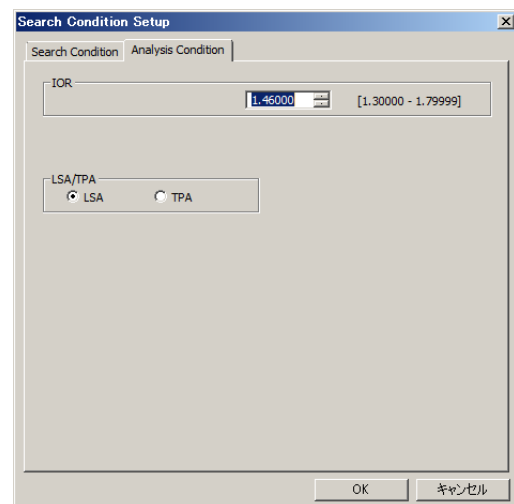
4. Set up the threshold values (Splice Loss, Return Loss, and End of Fiber), backscatter coefficient level and fault event.

See the help facilities.
→ Analysis Menu
→ Analysis Condition Setup



5. Click the tab of [Analysis Condition].

See the help facilities.
→ Analysis Menu
→ Analysis Condition Setup

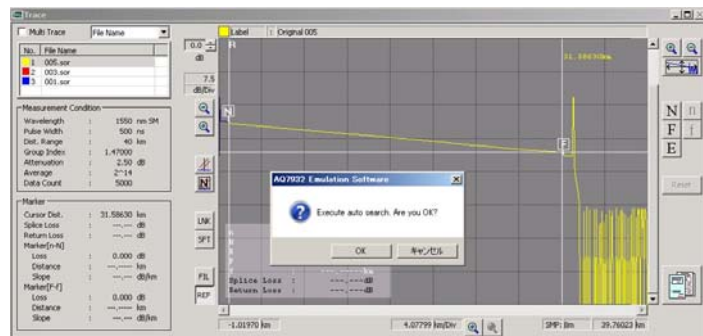
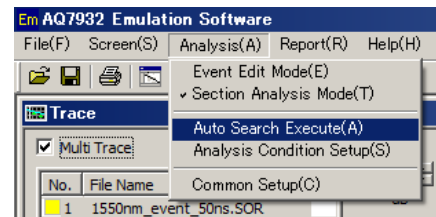


6. Set up the Group Index.
7. Select LSA or TPA.

See the help facilities.
→ Terminology List
→ Group Index
→ LSA
→ TPA

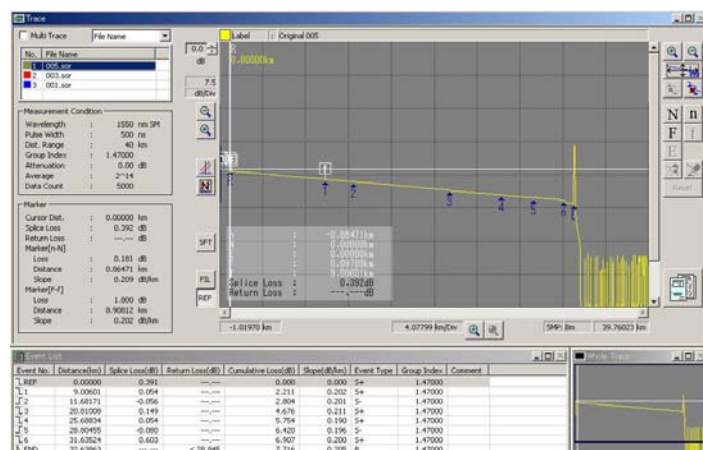
◆ Executing Auto Search

1. Click [Analysis] in the menu.
2. Click [Auto Search Execute].
3. Click [OK].



<Sample Display>

Results of auto search



◆ Editing an Event

The following describes the operations to insert an event, delete it, and move it to an appropriate position.

Inserting an Event

1. Move the cursor to the position on the trace waveform to which you want to insert an event, and click

Deleting an Event

1. Move the pointer to the number of the event on the trace waveform you want to delete, and click it.

Otherwise, click the desired event number in the event list.

2. Click the button.

Moving an Event

1. In the event list, click the number of the event you want to move.
2. Click the square of the marker **E** on the trace waveform. The color of the marker **E** will change to red.
3. Click and drag the marker to the position to which you want to move the event.

See the help facilities.
→ Analysis Functions
→ Event Edit Mode

See the help facilities.
→ Screen Operations
→ Marker Operation

Note

You cannot edit any event during an analysis with two waveforms.

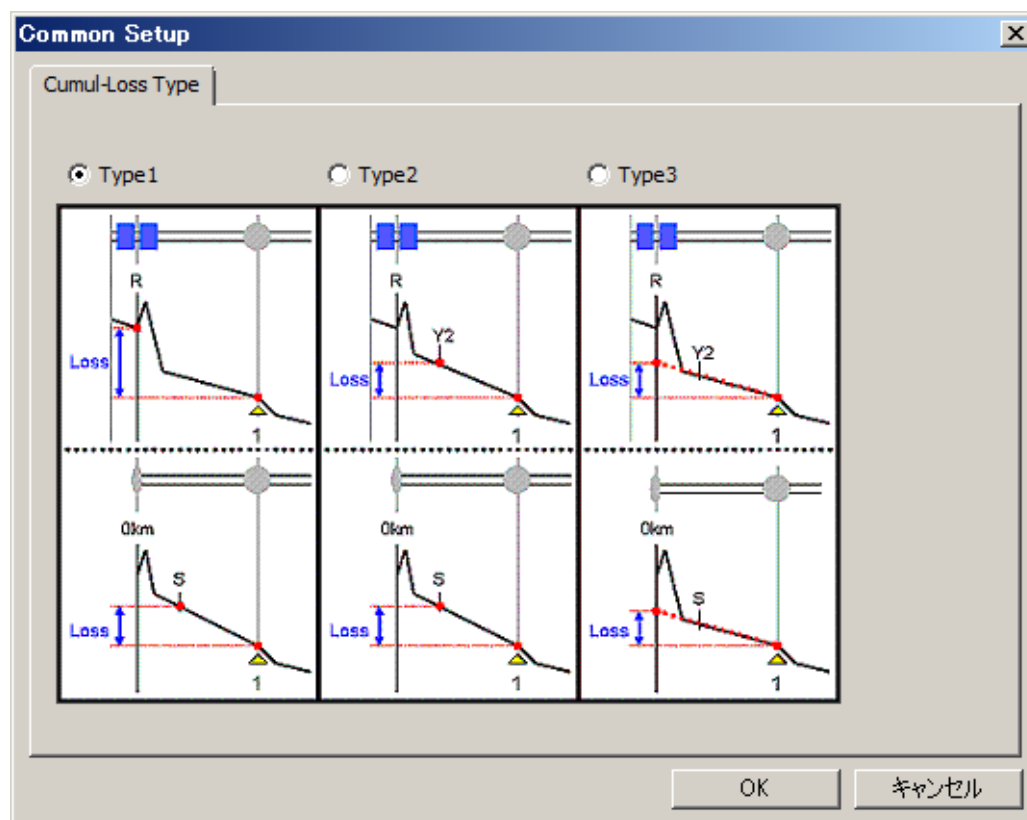
1-6 Common Setup

◆ Cumul-Loss Type

The method selection is available, regarding connection loss of near end adding to cumulated loss.

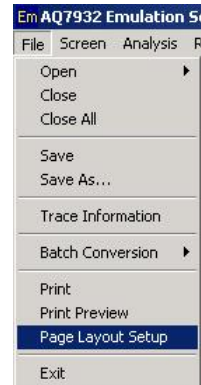
See the help facilities.
→ Analysis Functions
→ Common Setup

1. Click [Analysis] in the menu.
2. Click [Common Setup].
The [Cumul-Loss Type] window will appear.
3. Select the calculation method of the total loss.
Select the desired calculation method and click it.
4. Click [OK].



1-7 Printing

1. Click [File] in the menu.
2. Click [Page Layout Setup].



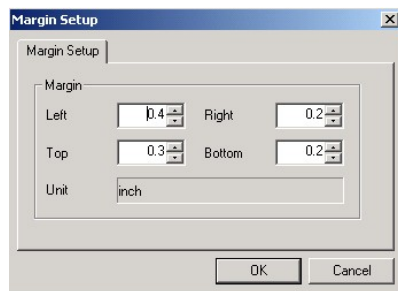
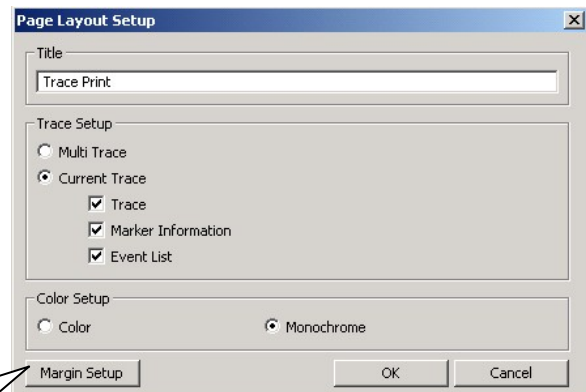
3. Click [Current Trace] in the [Trace Setup] area.

Mark the checkbox of the item you want to print out.

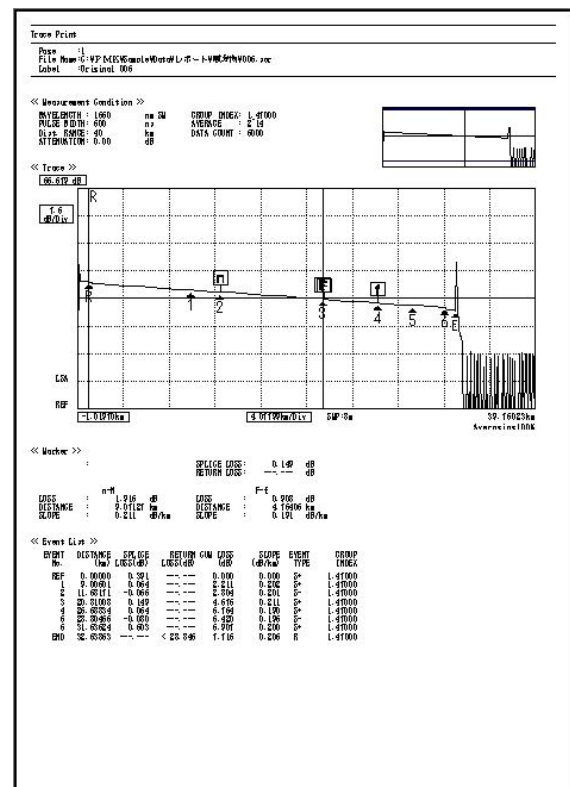
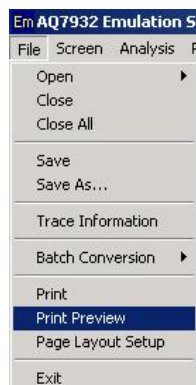
4. Click [OK].

If you want to print out a screen with two or more number of waveforms, select [Multi Trace].

[Margin Setup] is also available.



5. Click [Print Preview] from [File] in the menu.



The changes you have set on the trace screen will be reflected. (Zooming in/out, marker position, etc.)

Chapter 2 Editing and Saving Data

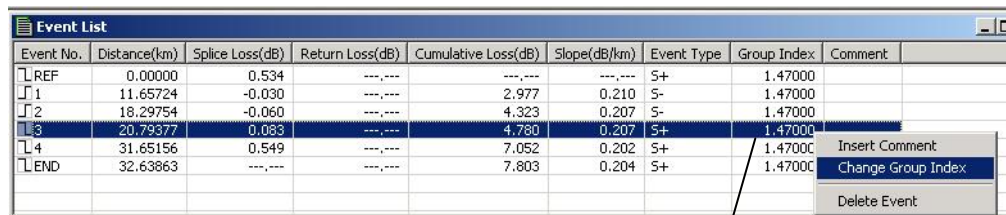
This chapter describes the functions for organization and management of measurement data.

2-1 Changing the Group Index and Inserting Comments on a Section Basis

◆ Changing the Group Index on a Section Basis

1. **Right-click** the group index of the event number you want to change in the event list.

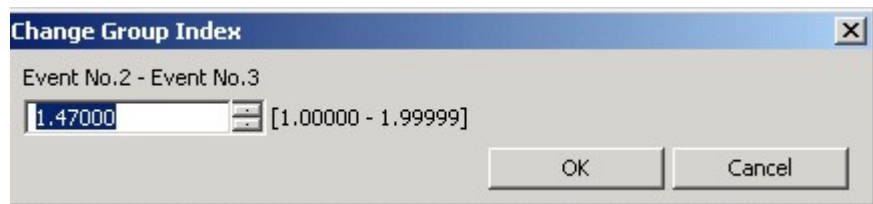
<Sample Display> Changing the group index of the fiber between the event numbers 2 and 3



Event No.	Distance(km)	Splice Loss(dB)	Return Loss(dB)	Cumulative Loss(dB)	Slope(dB/km)	Event Type	Group Index	Comment
REF	0.00000	0.534	---	---	---	S+	1.47000	
1	11.65724	-0.030	---	2.977	0.210	S-	1.47000	
2	18.29754	-0.060	---	4.323	0.207	S-	1.47000	
3	20.79377	0.083	---	4.780	0.207	S+	1.47000	
4	31.65156	0.549	---	7.052	0.202	S+	1.47000	
END	32.63863	---	---	7.803	0.204	S+	1.47000	

Right-click here.

2. Click [Change Group Index].



Change Group Index

Event No.2 - Event No.3

1.47000 [1.00000 - 1.99999]

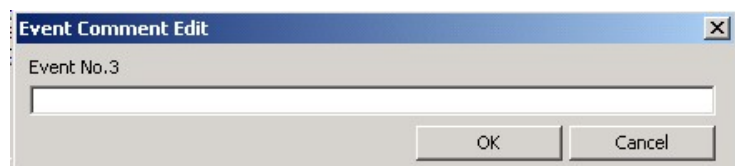
OK Cancel

3. Click [OK] after changing the value.

See the help facilities.
→ Screen Description
→ Event List

◆ Inserting Comments on a Section Basis

1. In the event list, **right-click** the number of the event to which you want to insert a comment.
2. Click [Insert Comment].



Event Comment Edit

Event No.3

OK Cancel

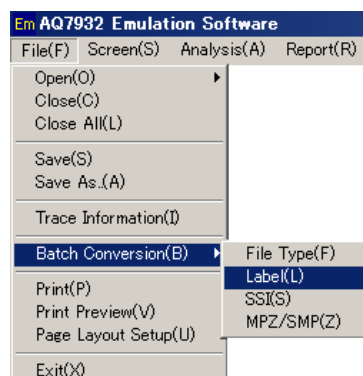
3. Click [OK] after writing a comment.

See the help facilities.
→ Screen Description
→ Event List

2-2 Label Batch Conversion

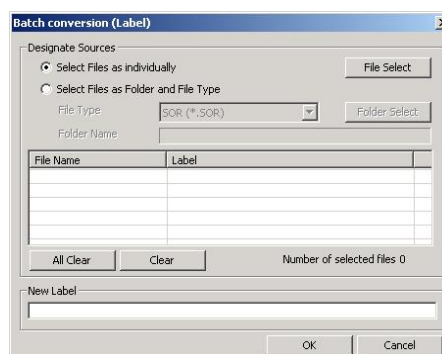
Since Label batch conversion directly converts the labels of the loaded files, considerable care should be exercised when using this function.

1. Click [File] in the menu.
2. Click [Label] in [Batch Conversion].



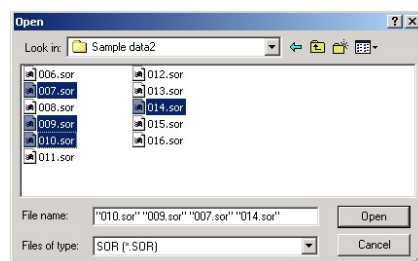
◆ Selecting Files and Converting Their Labels Individually

3. Click [Select Files as individually].
4. Click [File Select].

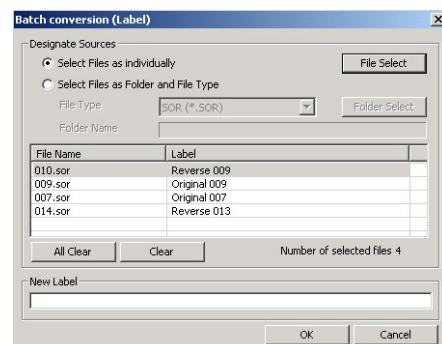


Selecting the Files of Which the Labels You Want To Convert

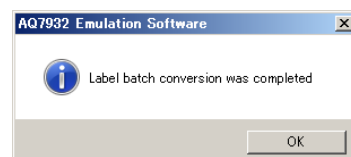
5. Click files while holding down the [Ctrl] key.
6. Click [Open].



7. Enter a new label name and click [OK].

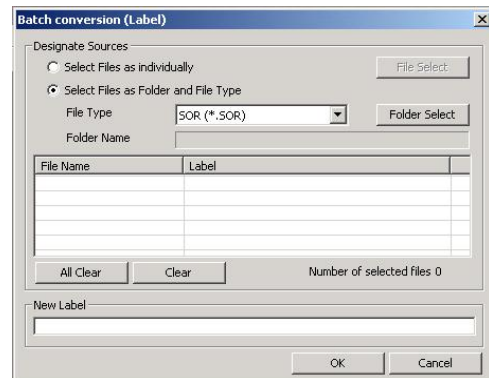


8. A confirmation message will appear. Click [OK].

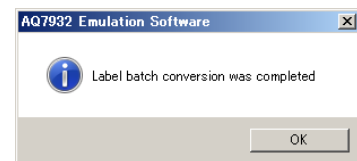


◆ Converting the Labels of All Files in a Folder by One Operation

3. Click [Select Files as Folder and File Type].
4. Click [Folder Select].
5. Specify the folder storing the waveform files of which the labels you want to convert.
6. Select the file type.
(Select the file format of the waveform file.)
7. Enter the new label name and click [OK].



8. A confirmation message will appear. Click [OK].



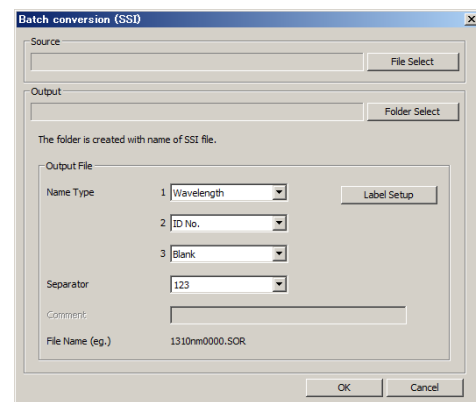
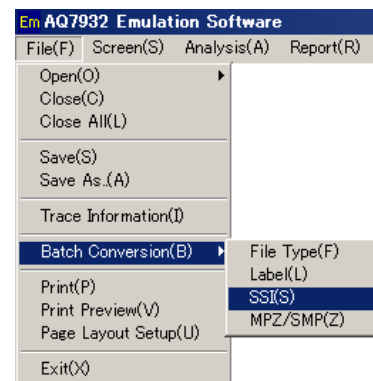
2-3 SSI Batch Conversion (Multi Core Trace Comparison)

Extract the trace file (*.SOR) from file of multi core trace comparison (*.SSI)

1. Click [File] in the menu.
2. Click [SSI] in [Batch Conversion].
3. Click [File Select]. Selects the original file for transformation.
4. Click [Folder Select]. Specify the folder storing the waveform files you want to convert.
5. Set up [Output File].

See the help facilities.
→ File Menu
→ Batch Conversion (SSI)

6. A confirmation message will appear. Click [OK].



2-4 MPZ/SMP Batch Conversion

1. Click [File] in the menu.
2. Click [MPZ/SMP] in [Batch Conversion].

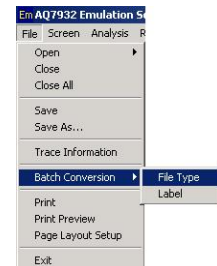
Select the source file (MPZ/SMP file) and the conversion destination. An MPJ/SMP file and SOR files will be extracted.

2-5 Saving Files after Converting the File Format by One Operation

This section describes the operation to save files after converting their file format by one operation.

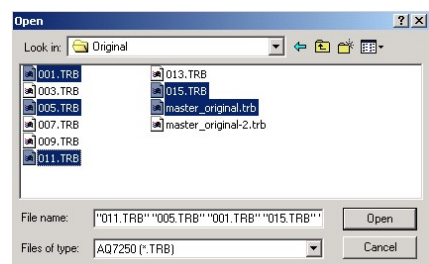
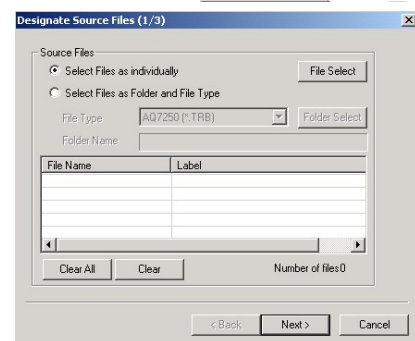
The file formats after conversion are limited to Telcordia (.SOR), Bellcore (.SOR) and BMP (.BMP).

1. Click [File] in the menu.
2. Click [File Type] in [Batch Conversion].

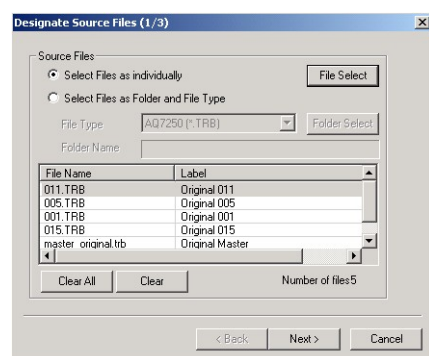


◆ Selecting Files and Converting Their Formats Individually

3. Click [Select Files as individually].
4. Click [File Select].
5. Select the files of which the file format you want to change.
Click files while holding down the [Ctrl] key.

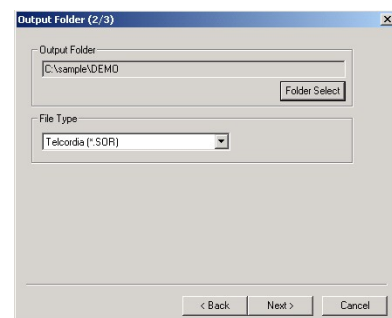


6. Click [Open].

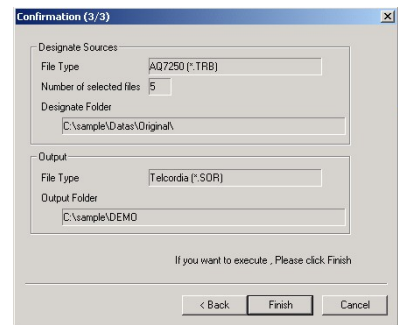
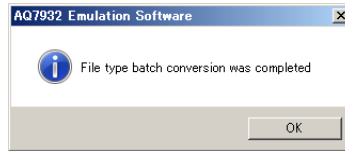


7. Click [Next].

8. Click [Folder Select].
9. Select the folder in which you want to save the files after conversion.
10. Select the file format after conversion from the [File Type] pull-down menu.
11. Click [Next].

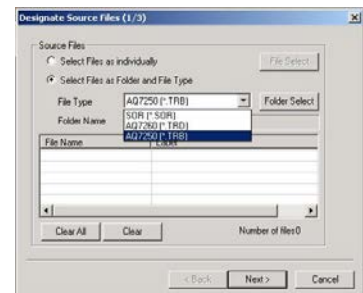


12. Click [Finish].
13. A confirmation message will appear. Click [OK].

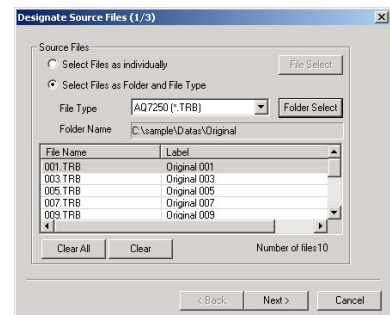


◆ Converting All Files in the Folder by One Operation

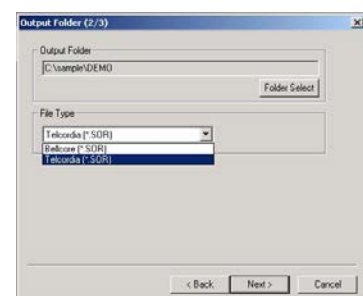
3. Click [Select Files as Folder and File Type].
4. Select the file type from the pull-down menu.
(Select the file format of the files you want to convert.)
5. Click [Folder Select].
6. Specify the folder storing the waveform files you want to convert.
7. Click [Next].



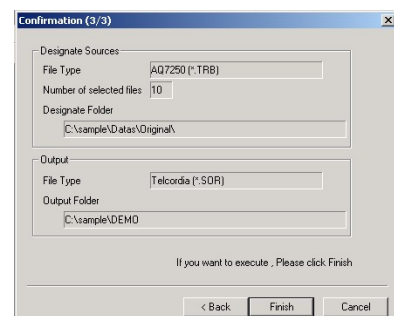
- Now the files you want to convert have been loaded.
8. Click [Next].



9. Click [Folder Select].
10. Select the folder in which you want to save the files after conversion.
11. Select the file format after conversion from the [File Type] pull-down menu.
12. Click [Next].



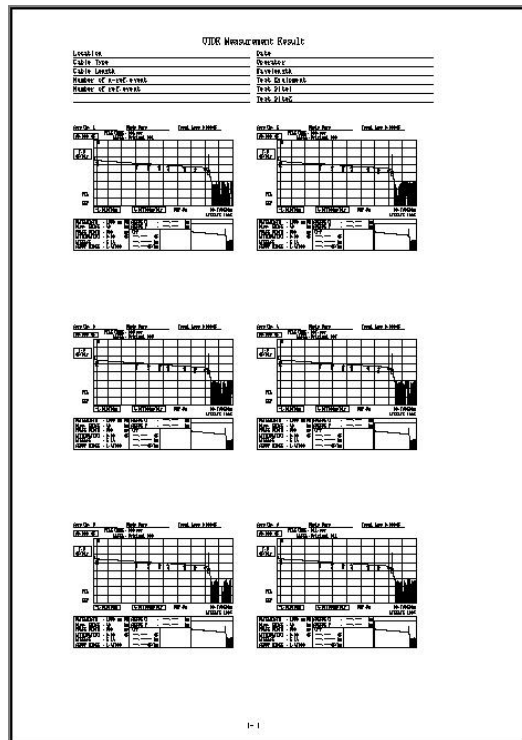
13. Click [Finish].
14. A confirmation message will appear. Click [OK].



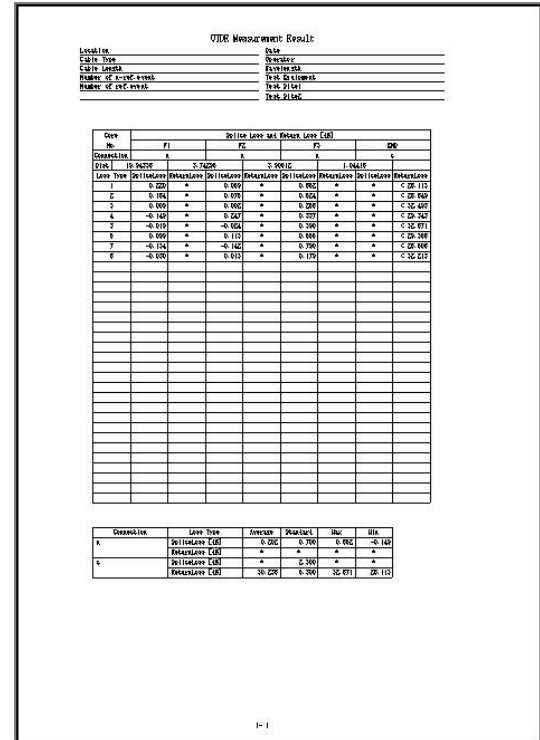
Chapter 3 Making a Report

This chapter describes the operations to make a report of the trace output of waveform files or a total table of the measured values.

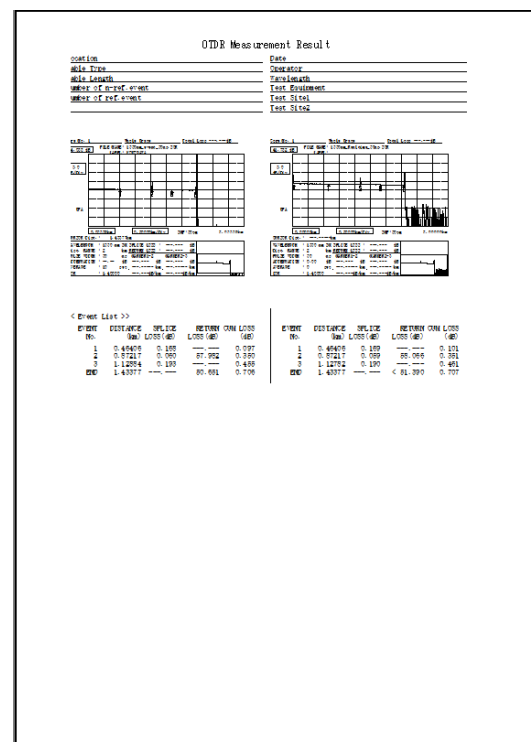
<Sample Trace Output >



<Sample Total Table Output >



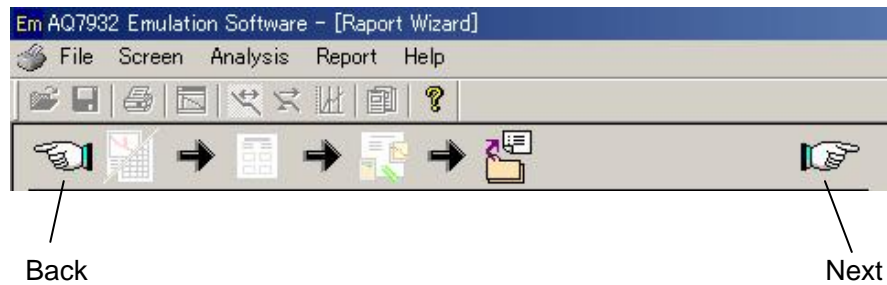
<Sample Trace Comparison Output>



Proceed with the operation along the steps of the report wizard.

You can return to the previous step any time when you want to change or add the settings.

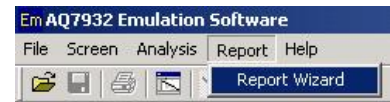
Even if you quit halfway through the report wizard, the latest settings are kept retained.



3-1 Trace Output

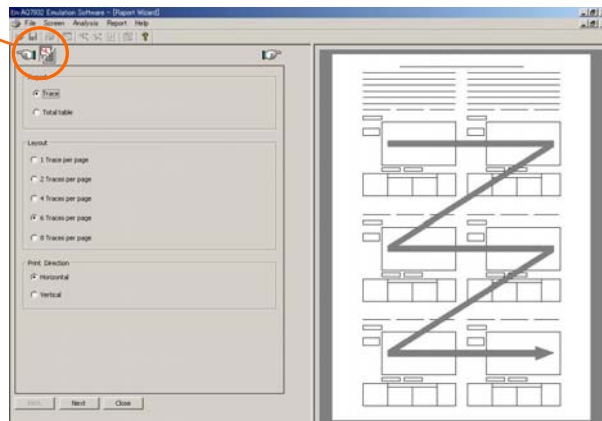
◆ Launching the Report Wizard

1. Click [Report] in the menu.
2. Click [Report Wizard].



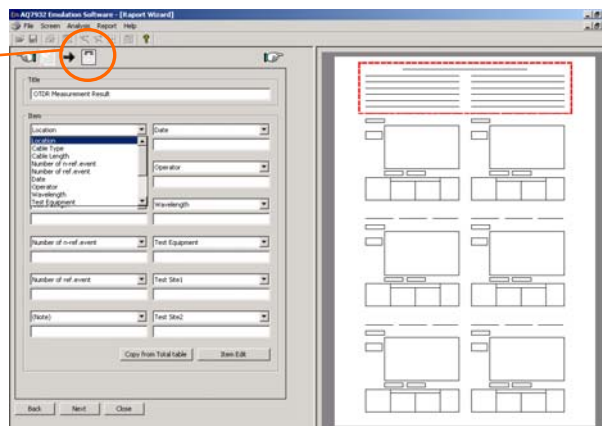
◆ Step 1 -- Layout Selection

1. Click [Trace].
A checkmark will be placed.
2. Select the number of waveforms printed on a page.
3. Select the printing direction.
(Specify this option when 4, 6, or 8 Traces per page has been selected.
The right figure shows a sample of the horizontal direction.)
4. Click [Next].



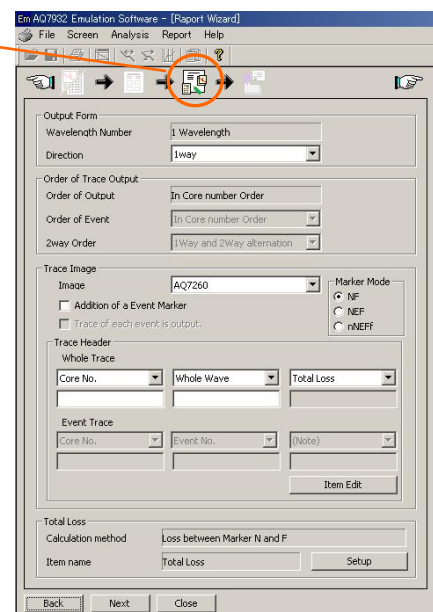
◆ Step 2 -- Layout Options (Page Layout)

1. Fill the desired item fields as necessary. (Up to 50 characters)
You can change the title and the item names.
(Direct entry for the title; selection from the pull-down menu for the item names)
2. Click [Next].

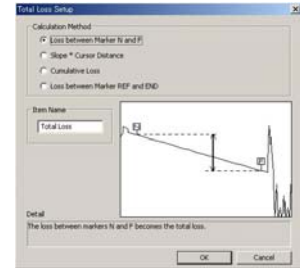


◆ Step 3 -- Layout Options (Trace Output Structure)

1. Select either 1way or 2way from the pull-down menu.
2. Select either screen or standard image of AQ7270/60 from the pull-down menu.
3. Select marker operation type NF, NEF, or nNEFF in the [marker Mode].
4. Fill the desired item fields in the [Trace Header] area as necessary.
You can change the item names by selecting from the pull-down menu.
5. Click [Setup].



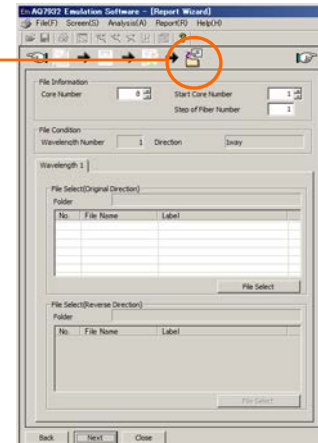
6. Select the calculation method of the total loss.
Select the desired calculation method and click it.
("Loss between Markers N and F" is most commonly used.)
7. Click [OK].
8. Click [Next].



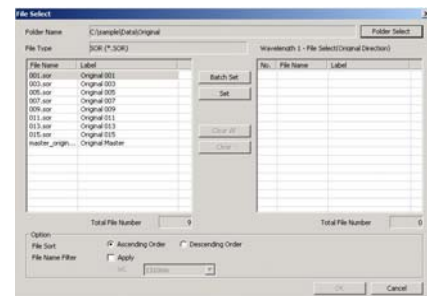
◆ Step 4 -- Trace File Selection



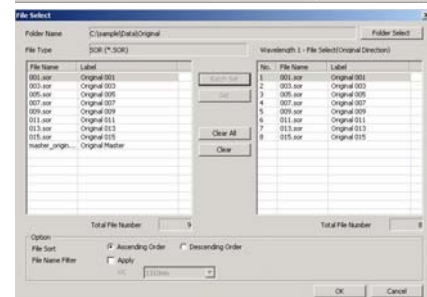
1. Set up the number of cores and the start core No.
2. Select the file format same as that of the waveform files.
3. Click [File Select].



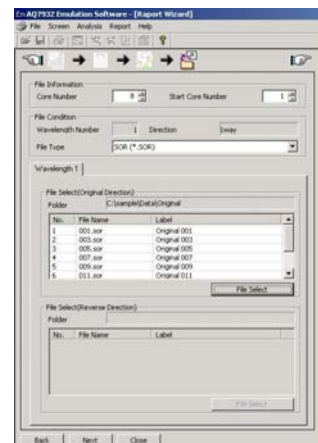
4. Click [Folder Select].
5. Select the folder storing the waveform data you want to load.
Among the files in the folder, the files of the format specified in Step 2 above are displayed.



6. Click [Batch Set].
From among the selected waveform files, as many number of files as set in Step 1 are set.



7. Click [OK].



8. Click [Next].

◆ Step 5 -- Master Event Position



This section describes the operation to set the event position (master) to be used as the reference for making a report.

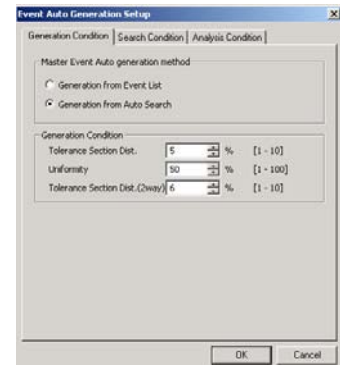
The master event is set up by either of [File Open] and [Auto Generation].

If a measurement is made bidirectionally, the master events must be set up for both directions respectively.

The master setup by [Auto Generation] is used as an example in the following explanation.

1. Click [Auto Generation].
The [Event Auto Generation Setup] window will appear.
2. Select [Generation from Auto Search].
Set up Search Condition and/or Analysis Condition as necessary.
3. Click [OK].

See the help facilities.
→ Trace Output
→ Step 5
→ Auto Generation



4. If a measurement is made bidirectionally, the master events must be set up for both directions respectively.
Click [Reverse] in the [File] area, and then perform Steps 1 through 3.

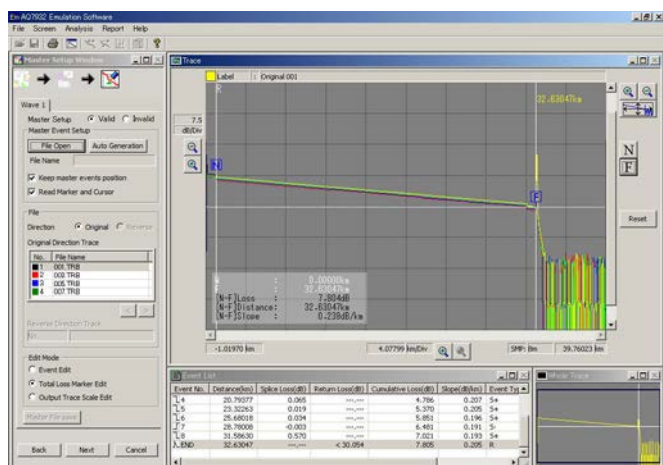
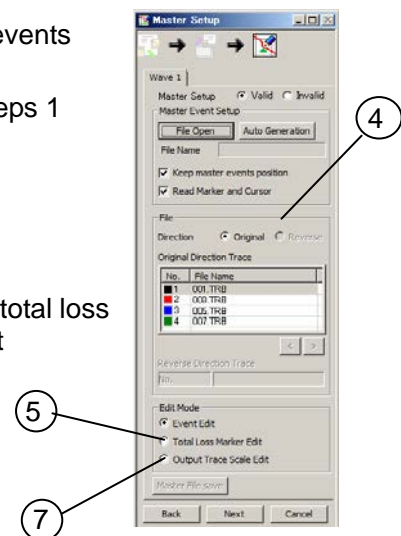
5. Click [Total Loss Marker Edit].
(Not available if this setup is not necessary due to the total loss setup in the [◆Step 3 -- Layout Options (Trace Output Structure)].)

6. Place the marker **N** at the start point of the fiber, and the marker **F** at the endpoint.

7. Click [Output Trace Scale Edit].

8. On the right side of the trace window, click [All] or click [Event] according to the desired vertical/horizontal scale and waveform display position. (If not set, the overall waveform will take the scale at the moment the file is saved, and the event waveform will take an automatically adjusted scale.)

9. Click [Next].

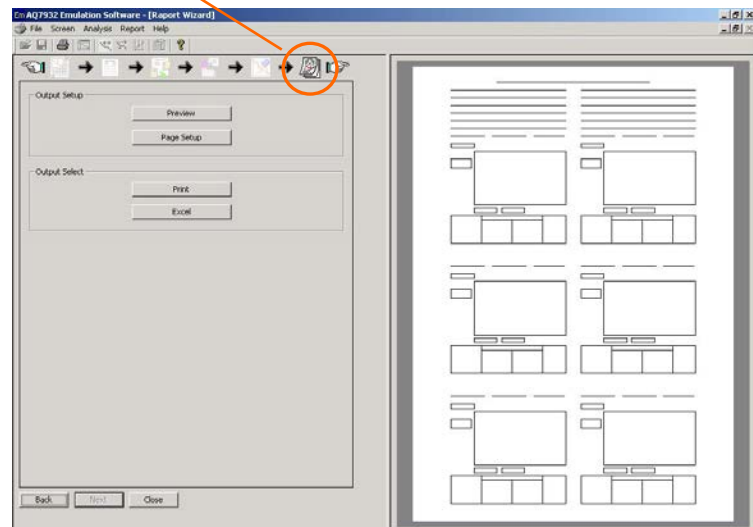


◆ Step 6 -- Output Setup



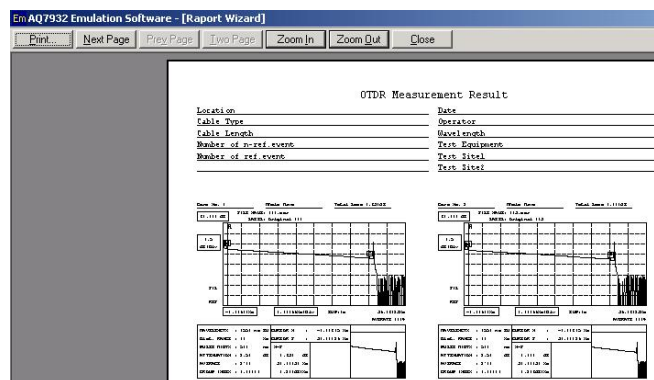
1. Click [Preview].

A printing screen will appear.



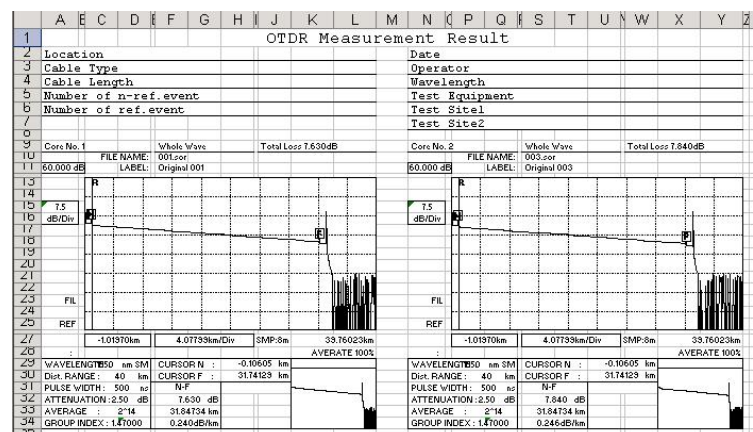
2. Click [Print]. Printing will be performed.

(You can perform enlargement of the screen display or other operations using other icons.)



3. Click [Excel].

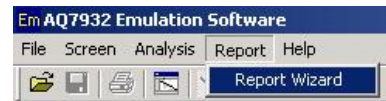
The waveform will be output as an Excel file in the form of a report.



3-2 Total Table Output

◆ Launching the Report Wizard

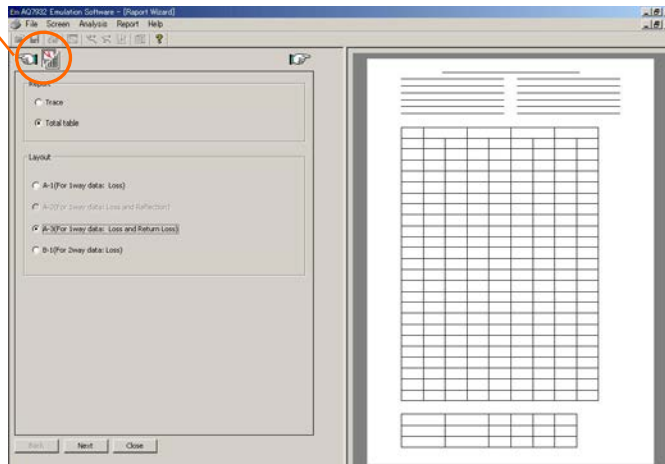
1. Click [Report] in the menu.
2. Click [Report Wizard].



◆ Step 1 -- Layout Selection



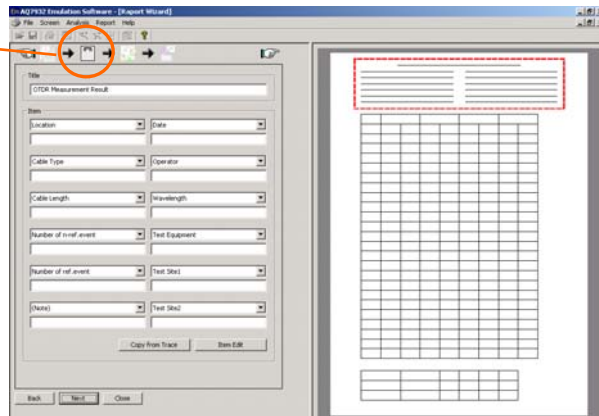
1. Click [Total Table].
A checkmark will be placed.
2. Select the combination of the data type (1way or 2way) and the item(s) to be displayed.
3. Click [Next].



◆ Step 2 -- Layout Options (Page Layout)



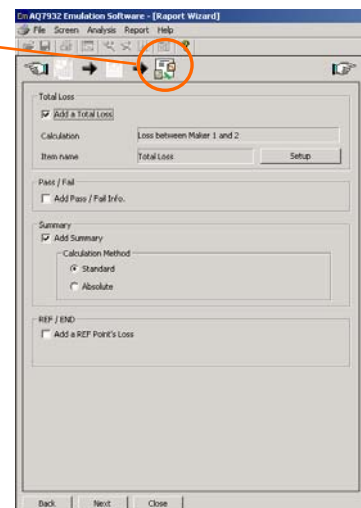
1. Fill the desired item fields as necessary. (Up to 50 characters)
You can change the title and the item names.
(Direct entry for the title; selection from the pull-down menu for the item names)
2. Click [Next].



◆ Step 3 -- Total Table Method



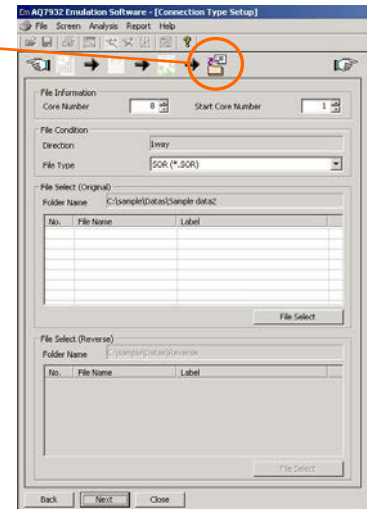
1. Click [add a Total Loss].
(Mark the checkbox.)
2. Click the item(s) to be added to the total table as required. (Mark the checkbox.)
3. Click [Next].



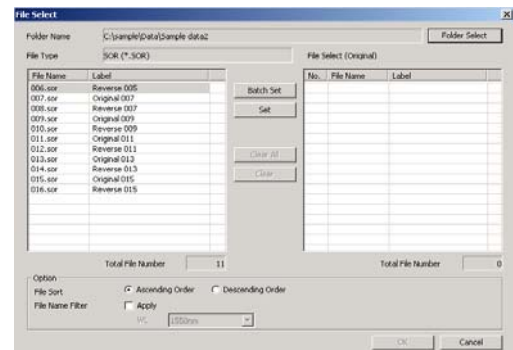
◆ Step 4 -- Trace File Selection



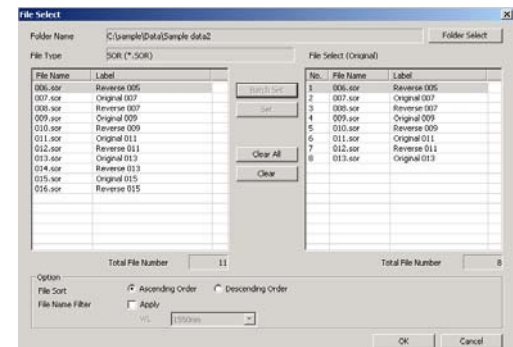
1. Set up the number of cores and the start core No.
2. Select the file format same as that of the data files to be summarized.
3. Click [File Select].



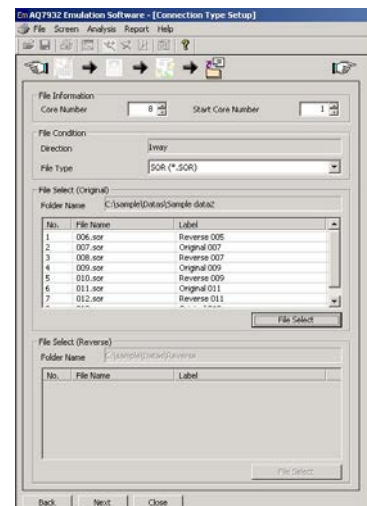
4. Click [Folder Select].
5. Select the folder storing the waveform data you want to load.
Among the files in the folder, the files of the format specified in Step 2 above are displayed.



6. Click [Batch Set].
From among the selected waveform files, as many number of files as set in Step 1 are set.



7. Click [OK].



8. Click [Next].

◆ Step 5 -- Master Event Position



This section describes the operation to set the event position (master) to be used as the reference for making a report.

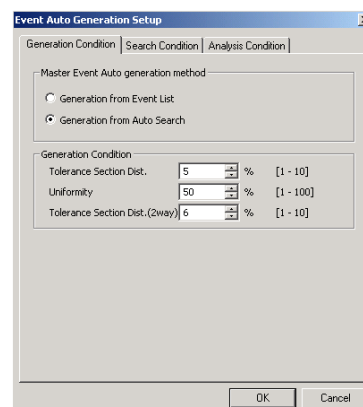
The master event is set up by either of [File Open] and [Auto Generation].

If a measurement is made bidirectionally, the master events must be set up for both directions respectively.

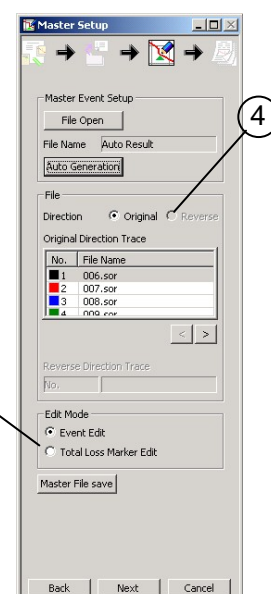
The master setup by [Auto Generation] is used as an example in the following explanation.

1. Click [Auto Generation].
The [Event Auto Generation Setup] window will appear.
2. Select [Generation from Auto Search].
Set up Search Condition and/or Analysis Condition as necessary.
3. Click [OK].

See the help facilities.
→ Total Table Output
→ Step 5
→ Auto Generation



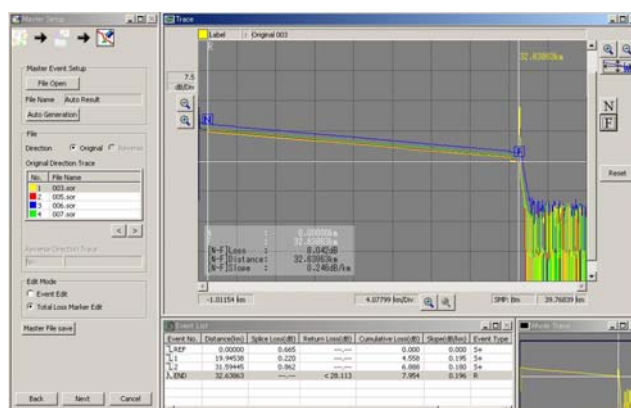
4. If a measurement is made bidirectionally, the master events must be set up for both directions respectively.
Click [Reverse] in the [File] area, and then perform Steps 1 through 3.



5. Click [Total Loss Marker Edit].
(Not available when the checkbox of [add a Total Loss] has not been marked in [◆Step 3 -- Total Table Method] because this setup is not necessary.)

6. Place the marker **N** at the start point of the fiber, and the marker **F** at the endpoint.

7. Click [Next].



◆ Step 6 -- Output Setup



1. Click [Preview].
2. Click [Print]. Printing will be performed.
(You can zoom into the screen display using [Zoom In].)



OTDR Measurement Result									
Location					Date				
Cable Type					Operator				
Cable Length					Wavelength				
Number of n-ref. event					Test Equipment				
Number of ref. event					Test Site1				
					Test Site2				

Core No.	Splice Loss and Return Loss [dB]					
	F1		F2		END	
Connection	n		n		c	
Dist	19.94538		11.64908		1.04418	
Loss Type	SpliceLoss	ReturnLoss	SpliceLoss	ReturnLoss	SpliceLoss	ReturnLoss
1	0.220	*	0.862	*	*	< 28.113
2	0.184	*	0.624	*	*	< 28.949
3	0.009	*	0.268	*	*	< 32.495
4	-0.148	*	0.557	*	*	< 29.545
5	-0.019	*	0.390	*	*	< 32.871
6	0.099	*	0.666	*	*	< 29.368
7	-0.134	*	0.790	*	*	< 28.608
8	-0.050	*	0.179	*	*	< 32.215

3. Click [CSV].

<Sample CSV Output Display>

A1	Comment											
1	A	B	C	D	E	F	G	H	I	J	K	L
2	Direction	1Way		Title	OTDR Measurement Result							
3	RL Meas on			Location				Date				
4	Cores	8		Cable Type				Operator				
5	Unit	km		Cable Length				Wavelength				
6				Number of n-ref. event				Test Equipment				
7				Number of ref. event				Test Site1				
8								Test Site2				
9												
10												
11	Event No.			F1	F1	F2	F2	END	END		Total Loss	Total Loss
12	Factor			SpliceLoss	ReturnLoss	SpliceLoss	ReturnLoss	SpliceLoss	ReturnLoss		Distance	Loss
13	Site			1	1	1	1	1	1			
14	Distance			19.94538	19.94538	11.64908	11.64908	1.04418	1.04418			
15	Core No.											
16	1			0.220	*	0.862	*	*	< 28.113		32.63863	8.042
17	2			0.184	*	0.624	*	*	< 28.949		32.63863	7.754
18	3			0.009	*	0.268	*	*	< 32.495		32.63863	7.33
19	4			-0.148	*	0.557	*	*	< 29.545		32.63863	7.409
20	5			-0.019	*	0.390	*	*	< 32.871		32.63863	7.125
21	6			0.099	*	0.666	*	*	< 29.368		32.63863	7.422
22	7			-0.134	*	0.790	*	*	< 28.608		32.63863	7.955
23	8			-0.050	*	0.179	*	*	< 32.215		32.63863	7.444
24												
25												

4. Click [Excel].

<Sample Excel Output Display>

A	B	C	D	E	F	G	H	I	J	K	L	M	N	O	P	Q	R	S
1																		
2	Location																	
3	Cable Type																	
4	Cable Length																	
5	Number of n-ref. event																	
6	Number of ref. event																	
7																		
8																		
9	Core No.																	
10																		
11	Connection																	
12	Dist	19.94538				11.64908				1.04418								
13	Loss Type	SpliceLoss	ReturnLoss	SpliceLoss	ReturnLoss	SpliceLoss	ReturnLoss	SpliceLoss	ReturnLoss									
14	1	0.220	*	0.862	*	*	*	*	< 28.113									
15	2	0.184	*	0.624	*	*	*	*	< 28.949									
16	3	0.009	*	0.268	*	*	*	*	< 32.495									
17	4	-0.148	*	0.557	*	*	*	*	< 29.545									
18	5	-0.019	*	0.390	*	*	*	*	< 32.871									
19	6	0.099	*	0.666	*	*	*	*	< 29.368									
20	7	-0.134	*	0.790	*	*	*	*	< 28.608									
21	8	-0.050	*	0.179	*	*	*	*	< 32.215									
22																		
23																		

◆ Setting Up the Standard Values

Set up the standard values for Splice Loss, Reflection, and Return Loss.

A value deviating from the standard value is displayed in red. (NG judgment)

The number of totals of NG is displayed.

1. Click [Total Table Edit].

Splice Loss and Return Loss [dB]									
Connection	S	F1	F2	END	Total Loss				
		n	n	c			Distance	Loss	
Dist	19.94538	11.64908	1.04418						
1		0.220	*	0.882	*	*	< 28.113	32.63863	8.042
2		0.184	*	0.624	*	*	< 28.849	32.63863	7.754
3		0.009	*	0.268	*	*	< 32.495	32.63863	7.330
4		-0.149	*	0.557	*	*	< 29.545	32.63863	7.409
5		-0.019	*	0.390	*	*	< 32.871	32.63863	7.125
6		0.099	*	0.666	*	*	< 29.368	32.63863	7.422
7		-0.134	*	0.750	*	*	< 28.608	32.63863	7.955
8		-0.050	*	0.179	*	*	< 32.215	32.63863	7.444

☐ Title Edit

NG Number(Total)

SpliceLoss

2

ReturnLoss

0

Search

Connection Type Setup

Exit

See the help facilities.
 → Total Table Output
 → Step 6
 → Total Table Edit

2. Click [Connection Type Setup].

Standard1			
Connection Type Name	Splice Loss	Reflection	Return Loss
n	0.70 dB		
c	2.30 dB	20.00 dB	6.50 dB
	0.00 dB	0.00 dB	0.00 dB
	0.00 dB	0.00 dB	0.00 dB
	0.00 dB	0.00 dB	0.00 dB
	0.00 dB	0.00 dB	0.00 dB
	0.00 dB	0.00 dB	0.00 dB
	0.00 dB	0.00 dB	0.00 dB
	0.00 dB	0.00 dB	0.00 dB
	0.00 dB	0.00 dB	0.00 dB

Limits Setup

☒ Standard1

☐ Standard2

☐ Standard3

OK Cancel

Set up the connection type name (splice, connector, n, c) of the event and these standard values.

The NG judgment is performed based on the standard values set up here.

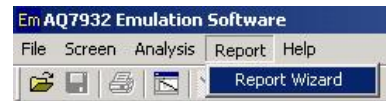
You can store up to three combinations of standard values.

See the help facilities.
 → Total Table Output
 → Step 6
 → Total Table Edit
 → Connection type setup

3-3 Trace Comparison Output

◆ Launching the Report Wizard

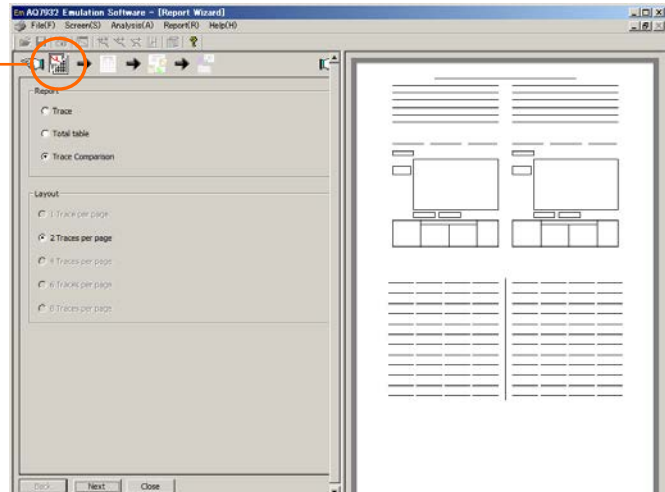
1. Click [Report] in the menu.
2. Click [Report Wizard].



◆ Step 1 -- Layout Selection



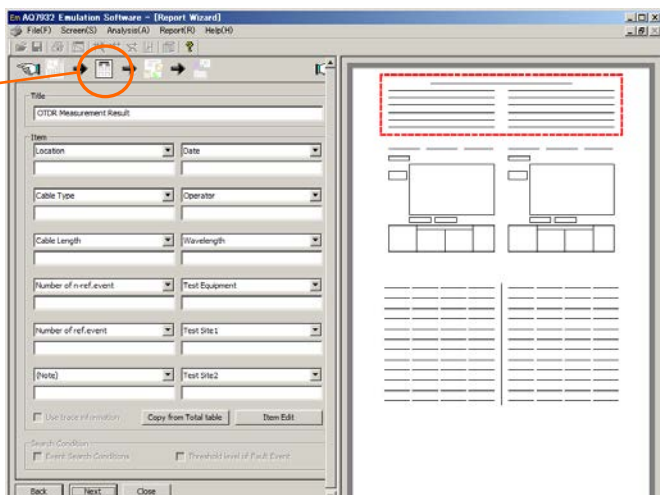
1. Click [Trace Comparison].
A checkmark will be placed.
2. Click [Next].



◆ Step 2 -- Layout Options (Page Layout)



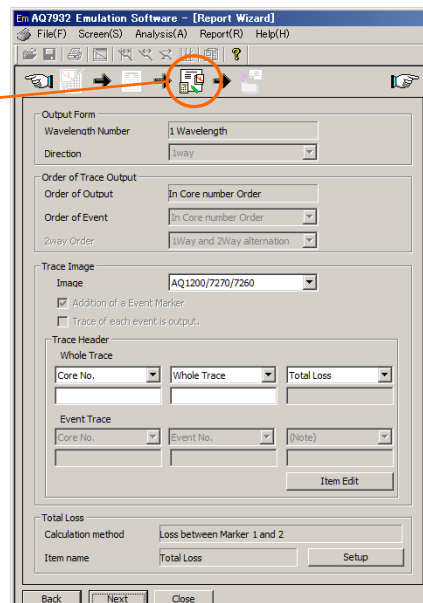
1. Fill the desired item fields as necessary. (Up to 50 characters)
You can change the title and the item names.
(Direct entry for the title; selection from the pull-down menu for the item names)
2. Click [Next].



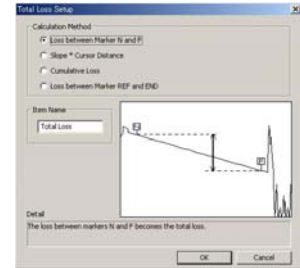
◆ Step 3 -- Layout Options (Trace Output Structure)



1. Select either screen or standard image of AQ7270/60 from the pull-down menu.
2. Fill the desired item fields in the [Trace Header] area as necessary.
You can change the item names by selecting from the pull-down menu.



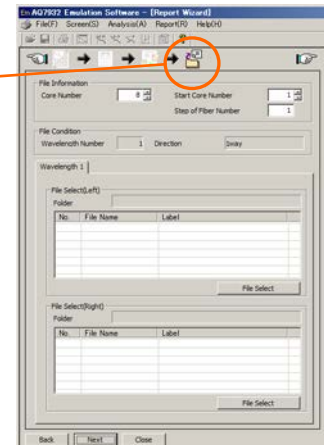
6. Select the calculation method of the total loss.
Select the desired calculation method and click it.
("Loss between Markers N and F" is most commonly used.)
7. Click [OK].
8. Click [Next].



◆ Step 4 -- Trace File Selection



1. Set up the number of cores and the start core No.
2. Select the file format same as that of the waveform files.
3. Click [File Select] in the [File Select(Left)] area .



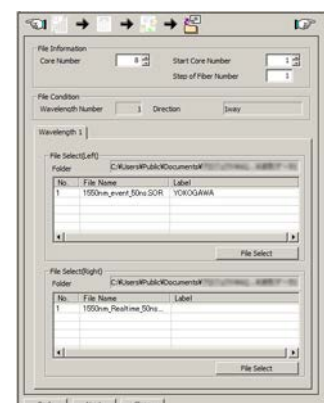
4. Click [Folder Select].
5. Select the folder storing the waveform data you want to load.
Among the files in the folder, the files of the format specified in Step 2 above are displayed.



6. Click [Batch Set].
From among the selected waveform files, as many number of files as set in Step 1 are set.



7. Click [OK].
8. Click [Next].



◆ Step 5 -- Master Event Position



This section describes the operation to set the event position (master) to be used as the reference for making a report.

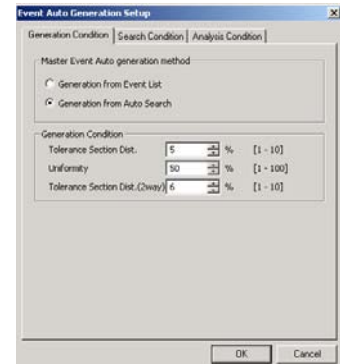
The master event is set up by either of [File Open] and [Auto Generation].

If a measurement is made bidirectionally, the master events must be set up for both directions respectively.

The master setup by [Auto Generation] is used as an example in the following explanation.

1. Click [Auto Generation].
The [Event Auto Generation Setup] window will appear.
2. Select [Generation from Auto Search].
Set up Search Condition and/or Analysis Condition as necessary.
3. Click [OK].

See the help facilities.
→ Trace Comparison Output
→ Step 5
→ Auto Generation



4. The master events must be set up for waveform files.
Click [Right] in the [File] area, and then perform Steps 1 through 3.

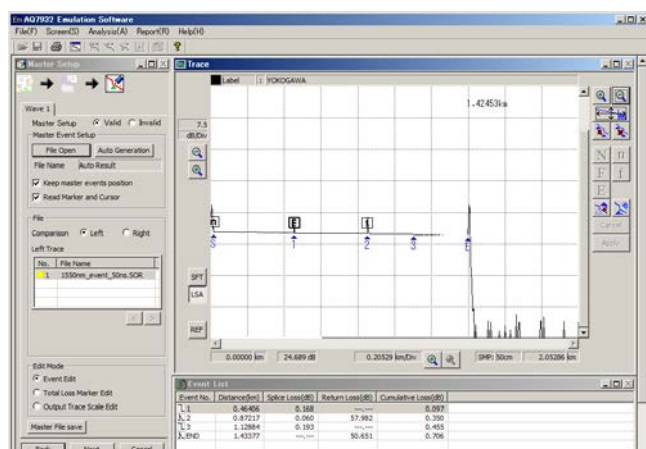
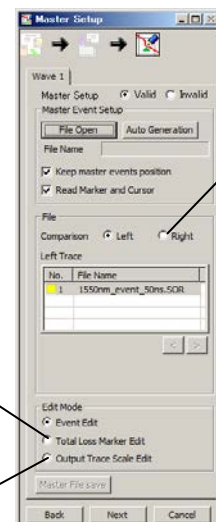
5. Click [Total Loss Marker Edit].
(Not available if this setup is not necessary due to the total loss setup in the [◆ Step 3 -- Layout Options (Trace Output Structure)].)

6. Place the marker N at the start point of the fiber, and the marker F at the endpoint.

7. Click [Output Trace Scale Edit].

8. On the right side of the trace window, click [All] or click [Event] according to the desired vertical/horizontal scale and waveform display position. (If not set, the overall waveform will take the scale at the moment the file is saved, and the event waveform will take an automatically adjusted scale.)

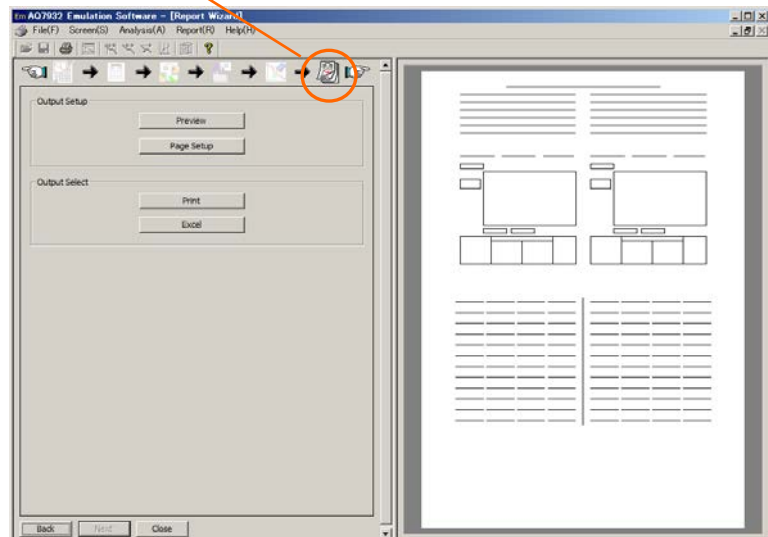
9. Click [Next].



◆ Step 6 -- Output Setup

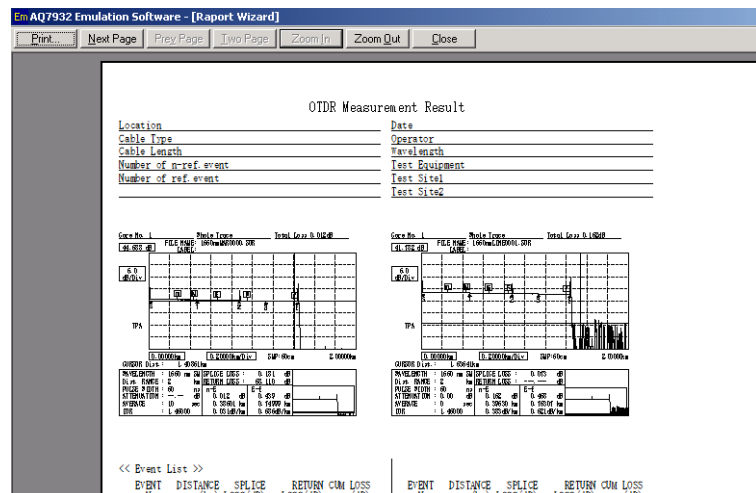
1. Click [Preview].

A printing screen will appear.



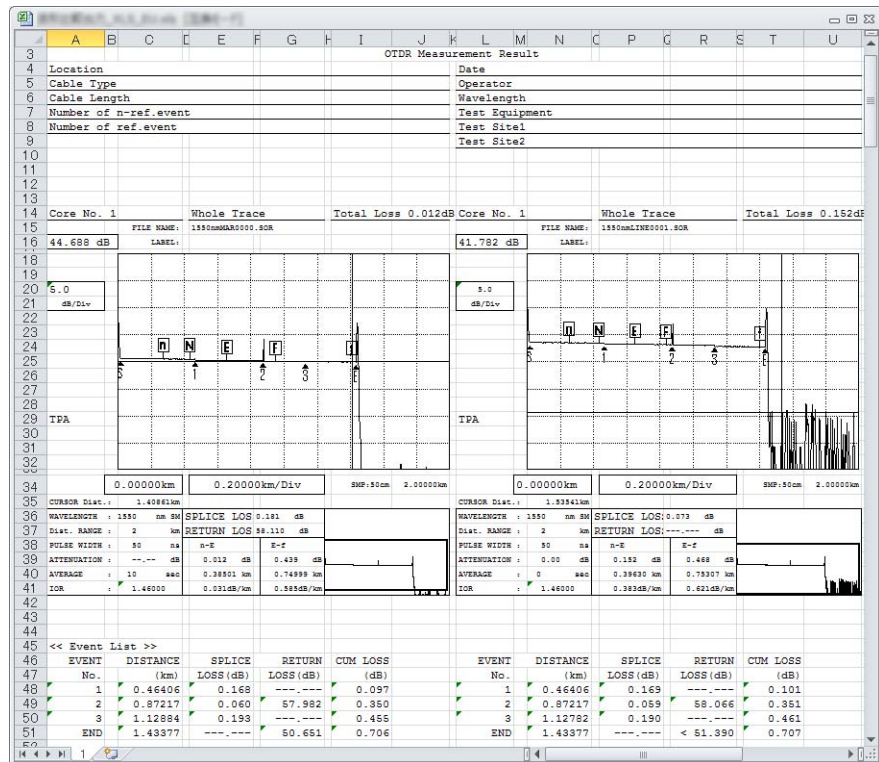
2. Click [Print]. Printing will be performed.

(You can perform enlargement of the screen display or other operations using other icons.)



3. Click [Excel].

The waveform will be output as an Excel file in the form of a report.



Chapter 4 Troubleshooting

4-1 Troubles Related to Waveform Analysis

- (1). It is difficult to place the cursor correctly on an event point on the trace screen.
 - Click the event number in the event list. The cursor correctly falls on the corresponding event point on the screen.
- (2). Tried to click and drag a displayed event mark, but it would not move.
 - Click the event mark, and click and drag the square of the marker **E**. The marker **E** will turn red. After moving, release the mouse button.
- (3). When two or more number of waveforms are displayed, it is difficult to distinguish each waveform because they are overlapping one another.
 - Change the waveform offset display value at the upper left of the trace screen by clicking the ▲ and ▼ buttons. With the current waveform as the center, other waveforms will vertically scroll.

4-2 Troubles Related to Making a Report

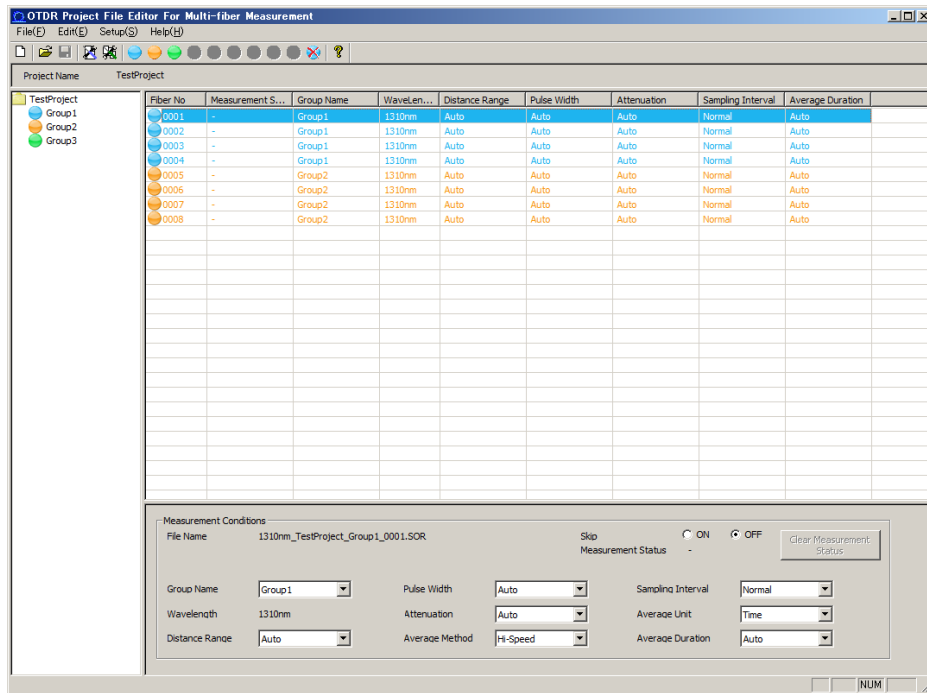
- (1). Cannot capture the bidirectional data during output of waveform or total table.
 - Separate the folder to store the original-direction file and the reverse-direction file.
- (2). The master file cannot be loaded.
 - The master file must have the file format and the measurement conditions (wavelength) identical to those of the waveform file to be output. Check them.
- (3). Wish to hide the cursors or markers when outputting waveforms.
 - Cursors and markers cannot be deleted during output of reports. Delete cursors and markers in normal analysis, resave (overwrite) the data, and create the report again.
- (4). Wish to change (set) the cursor position when outputting waveforms.
 - Perform one of the following procedures.
 1. Move (or set the position of) the cursor in normal analysis, resave (overwrite) the data, and create the report again.
 2. Set the waveform header to [Total Loss] and the total loss calculation method to [Slope * Cursor Distance], then change the cursor position under [Total Loss Marker Edit] in the master setup screen.
(Note that this method cannot be used if total loss is not used.)

Chapter 5 Related Software

5-1 OTDR Project File Editor

OTDR Project File Editor is software that supports the Yokogawa OTDR (AQ7270 series version 2.03 or later), and enables you to easily create files in Windows for the multicore fiber measurement function.

To start the software, double-click the icon created upon installation, or from the Windows [Start] menu click All programs > AQ7932 Emulation Software > OTDR Project File Editor.



For detailed operating instructions, refer to the Help file that comes with the software.