

User's Manual

CW500Viewer
Install Manual

This manual contains instructions how to install the software “CW500Viewer” supplied with CW500.

3rd Edition : August 2024 (YMI)
All Rights Reserved. Copyright © 2015 Yokogawa Test & Measurement Corporation



IM CW500-62EN
3rd Edition

Introduction

Interface

- CW500 is equipped with USB and Bluetooth* interfaces.
- * CW500-B1 only
- Communication method : USB Ver2.0
- Bluetooth : Bluetooth Ver2.1+EDR (Class2)
- Compliant profile: SPP

The followings can be done by USB/ Bluetooth communication.

- Downloading files in the internal memory of the instrument to a PC
- Making settings for the instrument via a PC
- Displaying the measured results on a PC in graphic form in real-time, and also saving the measured data at the same time.

System Requirements

- Operating System
Windows 10, Windows 11

Trademark

- Microsoft, Windows, Windows 10, and Windows 11 are either registered trademarks or trademarks of Microsoft Corporation in the United States and/or other countries.
- Bluetooth is a registered trademark of Bluetooth SIG.
- In this manual, the ® and TM symbols do not accompany their respective registered trademark or trademark names.
- Other company and product names are registered trademarks or trademarks of their respective holders.

The latest software is available for download from our homepage.

Installing “CW500Viewer”

Be sure NOT to connect the instrument to the PC until installation completes.

For Windows 10 / Windows 11

- 1
- The followings should be checked before installing this application.

 - To prepare your system for installation, please close all open programs.
 - Installation shall be done with administrative right.
 - To use CW500Viewer, .NET Framework 3.5 is required. If .NET Framework 3.5 is not installed in your PC, it will be automatically installed when installing this application. Internet connection is required to install .NET Framework 3.5.

Ensure that internet connection is established, otherwise the installation of this application may be incomplete.

- 2
- Insert the CD in your PC's CD drive.

Then the following pop-up will appear at the upper right on the screen.

Left-click on this box.(The screenshots are from Windows 10.)

DVD RW Drive (H:): CW500

Tap to choose what happens with this disc.

- 3
- Click and select “Run CW500SetupLauncher.exe” when the following box appears.

If User Account Control dialog box appears, click “Yes”.

DVD RW Drive (H:): CW500

Choose what to do with this disc.

Install or run program from your media

Run CW500SetupLauncher.exe
Publisher not specified

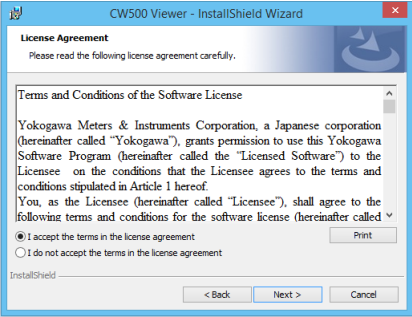
Other choices

Open folder to view files
File Explorer

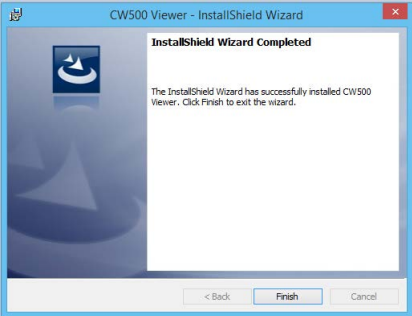
Take no action

If neither 2 nor 3 appears, run “CW500SetupLauncher.exe” from the CD.

- 4
- Read through and understand the License Agreement and click “ I accept....”, and then click“ Next”.



- 5
- Click “Next” after entering the user information and other supplementary information, and click “Next”.
- 6
- Confirm the information on installation, and then click “Install” to start installation.
- 7
- Click “Finish” when “InstallShield Wizard Complete” dialog box appears.



.NET Framework3.5 installation starts if .NET Framework3.5 is not installed in your PC.

If a message requiring restarting your PC is displayed, click “Yes” and restart your PC. Run “CW500SetupLauncher.exe” from the CD after restarting the PC.

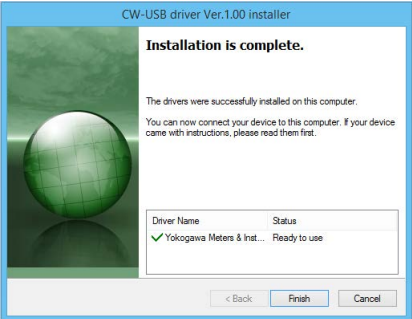
Installing USB driver

- 1
- When CW500Viewer has been successfully installed in your computer, the following dialog box appears to start installing the USB driver. Click “Next”.



- 2
- Installation completes when the following window appears.

Click “Finish”.



Note

To restart the interrupted USB driver installation process, right click on the CD drive and click “Open”.
Click and start “cwusb100_setup.exe” in the “DRIVER” folder.

Starting “CW500Viewer”

Click the “CW500Viewer“ icon on your desktop, or click “Start”-> “Program”-> “Yokogawa”-> “CW500Viewer”.

Note

Turn ON the power of CW500 and then connect CW500 and PC.

How to un-install the PC Software:

Access to the“ Control Panel” in the Start Menu, and double-click on the “Programs and Features” to remove the “CW500Viewer”.