

By using a LabVIEW measurement instrument driver that supports YOKOGAWA products, you can control our measurement instruments from a PC. However, for some of our products, you need to install a USB driver in order to connect them to a PC through a USB link. This document explains how to install the USB driver for connecting to such products.

Trademarks

Microsoft Windows is a registered trademark or trademark of Microsoft Corporation in the United States and/or other countries.

Disclaimers

YOKOGAWA assumes no responsibility for any and all damages that may occur directly or indirectly through the use of this software.

Applicable LabVIEW Drivers and Products

YKDL750(DL750/DL750P), YKDL1600(DL1620/DL1640), YKDL1700(DL1720/DL1740/DL1720E/DL1740E/DL1740EL)
YKDL7400(DL7440/DL7480), YKSL1400(SL1400)

PC System Requirements

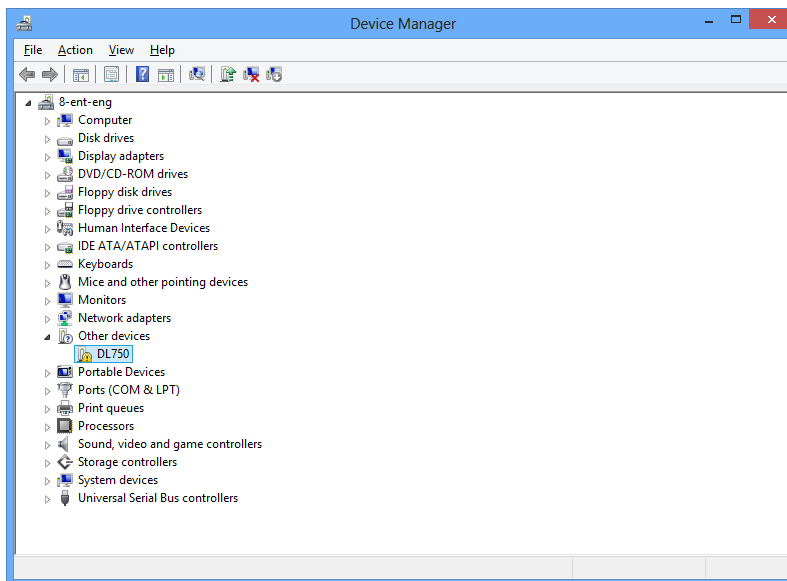
- CPU
Pentium III/Celeron 866 MHz or equivalent or better
- Operating System
Windows 7 (32bit/64bit), Windows 8 (32bit/64bit)

Installing the Driver (Windows 7 and Windows 8)

1. **Connect the instrument to your PC using a USB cable (the following example is for a DL750)**
Turn on the DL750 and your PC. After they start successfully, connect them using a USB cable.
2. **Open Device Manager.**
On the **Start** menu, right-click **My Computer**.
On the shortcut menu, click **Properties**.
Click **Device Manager** in the upper left of the system screen.

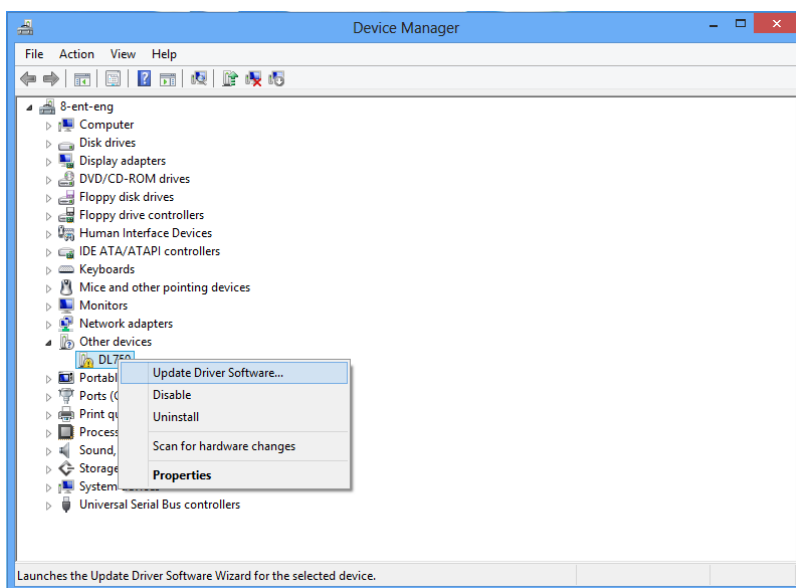
3. Check the device.

Under Other devices, check that the DL750 has been identified.

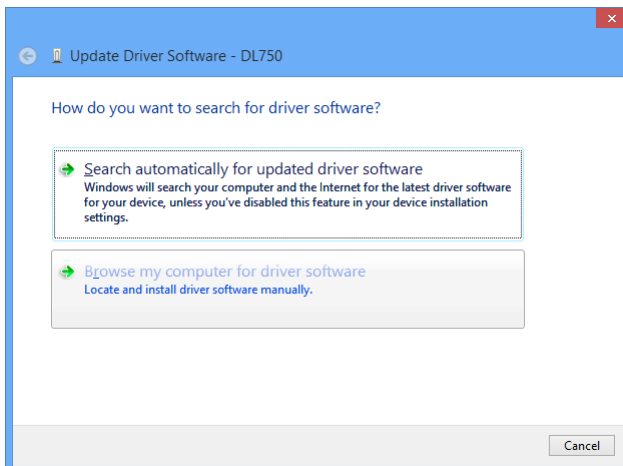


Right-click the DL750 device icon. A shortcut menu appears.

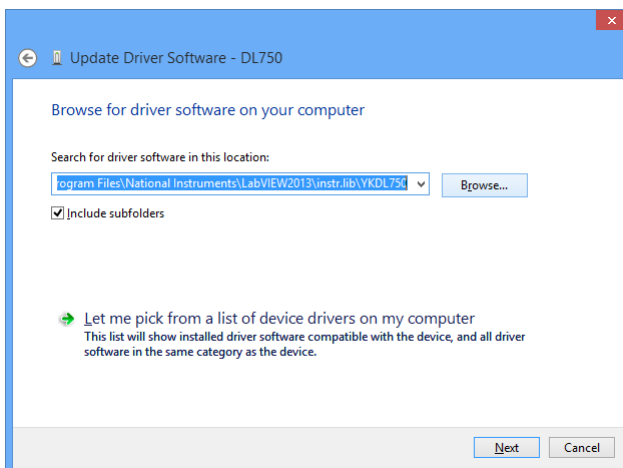
Click **Update Driver Software**.



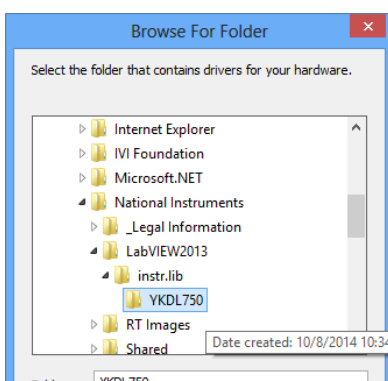
4. **Specify how to search for the driver.**
Click **Browse my computer for driver software**.



5. **Specify the driver location.**
Click **Browse**.

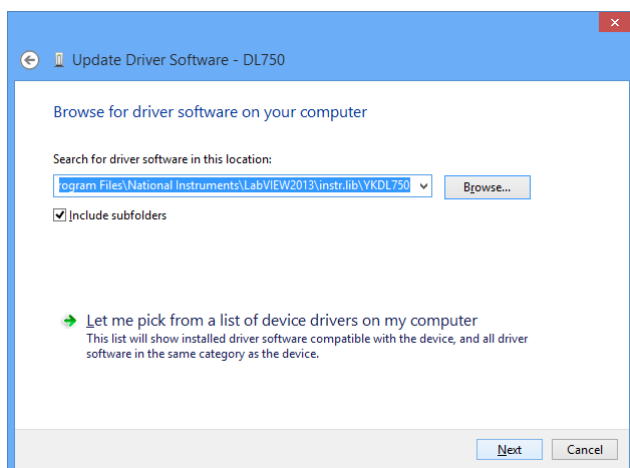


Choose the same folder name as the LabVIEW driver (C:\Program Files\National Instruments\LabVIEW2013\instr.lib\YKDL750), and click **OK**.

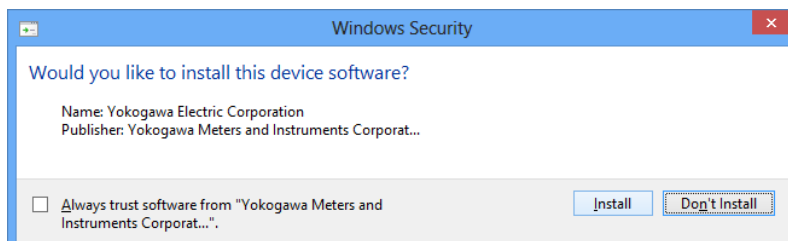


6. **Install the driver.**

Click **Next**. The PC starts to search for the driver.



When the driver is found, an installation window will appear. Click **Install**.



The following window appears. Click **Close** to complete the installation.

