

1. Contents of the Package

The following items are included in the package. If some items are missing or otherwise inconsistent with the contents description, please contact the dealer from which you purchased them.

Name	Quantity	Note
Control Toolkit for MATLAB Setup Disk	1 piece	Media: CD-ROM
This manual	1	

2. User's Manual

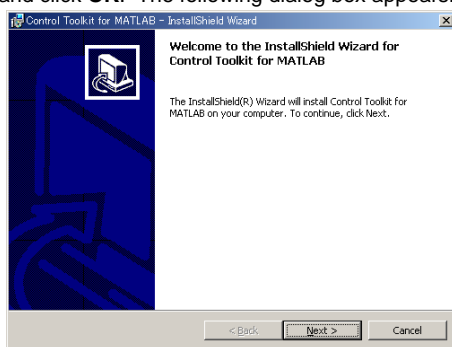
This package does not include a printed user's manual. Please refer to the electronic manual (IM707747-61E.pdf) found in the root directory of the Control Toolkit for MATLAB Setup Disk (CD-ROM). Adobe Acrobat Reader (3.0 or later) is required for viewing the electronic manual.

3. Installing the Control Toolkit for MATLAB

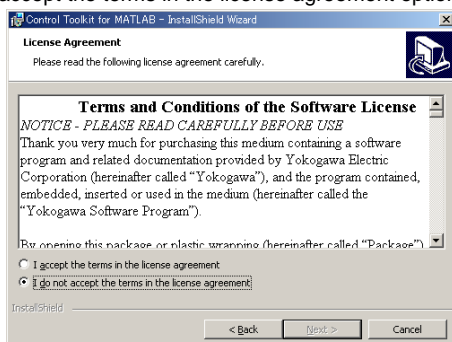
OSs that the Control Toolkit for MATLAB supports: Microsoft Windows 95/98/Me, Window NT 4.0, Windows 2000 Pro, and Windows XP Professional/Home Edition.

The WE7000 Control Software and the WE Control API Vol.1 must be installed before installing the "Control Toolkit for MATLAB."

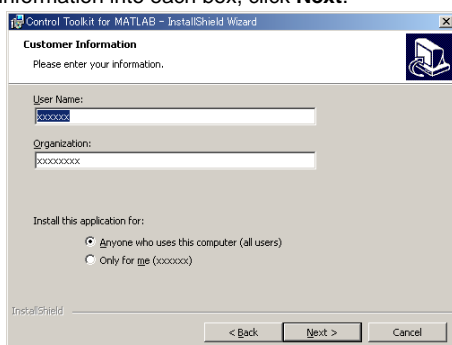
1. Start Windows.
2. Insert the "Control toolkit for MATLAB" setup disk into the CD-ROM drive. An installer automatically starts and the following dialog box opens. If the program does not start automatically, choose Start > Run, then type setup.exe in the Name box and click **OK**. The following dialog box appears. Click **Next**.



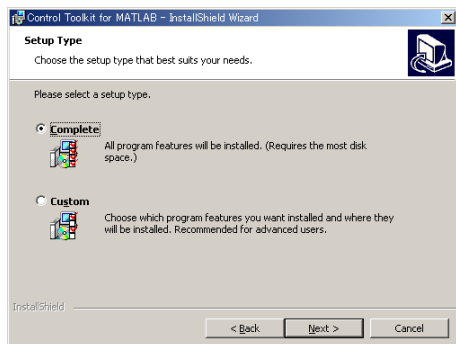
3. The following dialog box appears containing license agreement information. Confirm the license agreement, click the I accept the terms in the license agreement option button, and click **Next**.



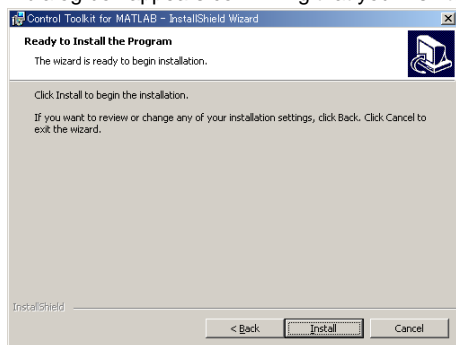
4. The following dialog box appears for registering the name and the organization of the user. After entering the appropriate information into each box, click **Next**.



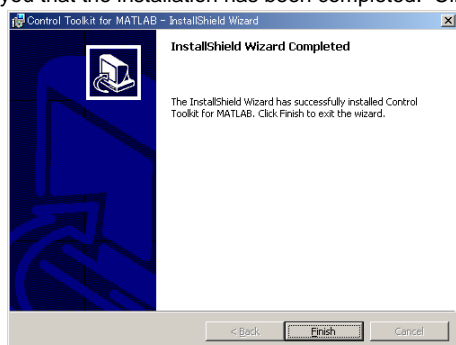
-
5. A dialog box appears for you to confirm the start of the installation. To proceed with the default installation (Complete), click **Next**. To select which components to install, or to change the installation destination, choose the Custom option then click **Next**.



6. A dialog box appears confirming that you wish to begin installation. Click **Install**.



7. The installation starts and a dialog box appears indicating the progress of the installation. A dialog box appears notifying you that the installation has been completed. Click **Finish**.



Note

If you installed MATLAB to a directory other than the default directory, change the installation directory of the Control Toolkit for MATLAB.

4. Installed Files

When you install the Control Toolkit for MATLAB, the directory \YOKOGAWA\WE7000 is created under the directory where MATLAB is saved (the default directory for MATLAB 6.5 is C:\MATLAB6p5\toolbox), and the following files are copied to the directory.

IM707747-61E.pdf	User's Manual
*.dll	Mex function for WE control
*.m, *.fig	Sample programs
readme *.txt	Information about the sample programs

5. Development Environments Supported

MATLAB 6.1 (R12.1) or 6.5 (R13)