

## 1. Contents of the Package

The following items are included in the package. If some of the contents are not correct or missing or if there is physical damage, contact the dealer from which you purchased them.

Name	Quantity	Note
WE Control API Setup Disk	1 piece	Media: CD-ROM
This manual	1 piece	

## 2. User's Manual

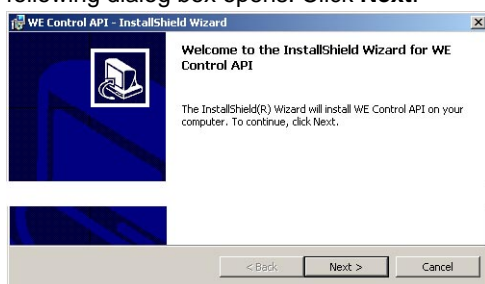
The package does not include a printed user's manual. Please refer to electronic manuals in PDF format (WEAPI.pdf(IM707741-61E) and WEAPINet.pdf(IM707741-62E)) in the installation directory displayed after setup the software. Adobe Acrobat Reader (3.0 or later) is required in viewing the electronic manual.

## 3. Installing the WE Control API

OSs that the WE Control API supports: Microsoft Windows 95/98/Me, Window NT 4.0, Windows 2000 Pro, and Windows XP Professional/Home Edition.

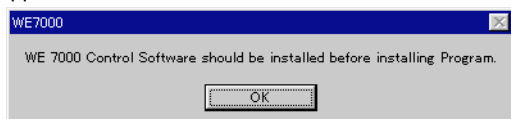
The WE7000 Control Software must be installed before installing the WE Control API.

1. Start Windows.
2. Insert the WE Control API Setup Disk into your PC's CD-ROM drive. An installer automatically starts and the following dialog box opens. Click **Next**.

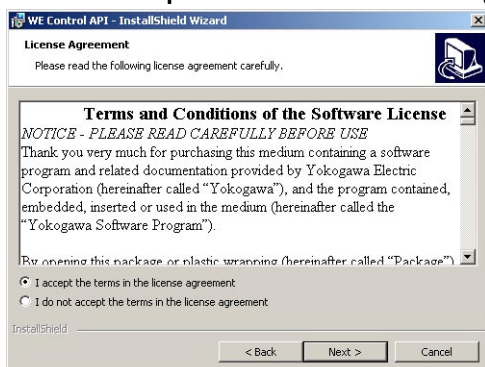


### Note

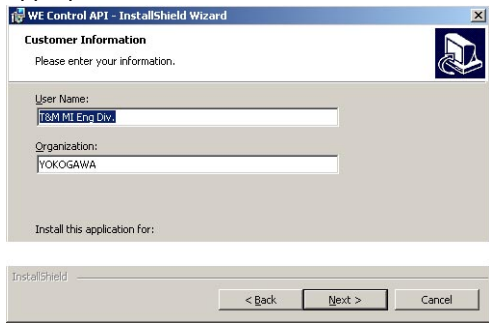
If you attempt to install the WE Control API when the WE7000 Control Software is not installed, the following dialog box appears. Install the WE7000 Control Software first, and then install the WE Control API.



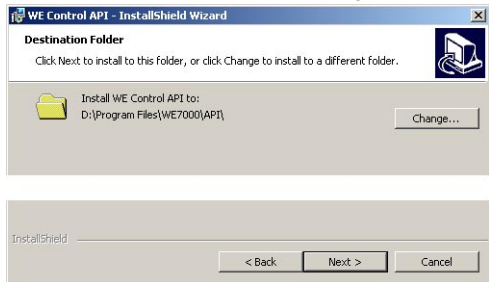
3. The following dialog box appears containing license agreement information. Confirm the license agreement, click the **I accept the terms in the license agreement** option button, and click **Next**.



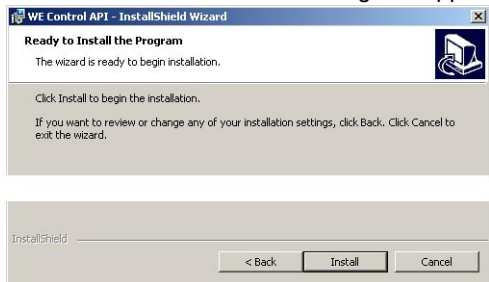
4. The following dialog box appears for registering the name and the organization of the user. After entering the appropriate information into each box, click **Next**.



5. Specify the installation destination. The default installation destination is set to “C:\Program Files\WE7000\API\.” If this is OK, click **Next**. To change the installation directory, click **Change**, select the directory, and click **Next**.



6. A dialog box appears for you to confirm the start of the installation. Click **Install**. The installation starts and a dialog box appears indicating the progress of the installation.



7. A dialog box appears notifying you that the installation has been completed. Click **Finish**.



## 4. A List of Files Included

File Name	Description
WeAscii.bas	WE Control API definition file for Visual Basic
WeDP.bas	API definition file for file operation functions for Visual Basic
WeEvent.ocx	Control used to process asynchronous messages (events)
*.dll	DLL files for the WE Control API
WeAscii.h	WE Control API definition file (C++ include file)
WeDP.h	API definition file for file operation functions (C++ include file)
WeAPI.pdf	WE Control API Online Manual
WeAPINet.pdf	WE Control API for .Net Online Manual
Sample programs	Sample programs for various modules (included in the Samples folder)

## 5. Development Environments Supported

Microsoft Visual Basic 5.0, 6.0, and .Net  
Microsoft Visual C++ 4.1, 5.0, 6.0, and .Net  
Microsoft Visual C# .Net