

This user's manual describes the installation procedure for the YKMUSB USB driver. Refer to relevant instructions for your operating system (Windows XP, Windows Vista, Windows 7, Windows 8, Windows 8.1, or Windows10).

Trademarks

- Microsoft, Windows, and Windows Vista are either registered trademarks or trademarks of Microsoft Corporation in the United States and/or other countries.
- Adobe, Acrobat, and PostScript are trademarks of Adobe Systems Incorporated.
- In this manual, the ® and ™ symbols do not accompany their respective registered trademark or trademark names.
- Other company and product names are trademarks or registered trademarks of their respective companies.

Disclaimers

Once the package is opened, Yokogawa Electric Corporation offers no warranty for the product in anyway, except for physical damage to the original setup disk or documentation. Yokogawa Electric Corporation assumes no responsibility for any and all damages that may occur directly or indirectly through the use of the product.

System Requirements

- **Personal Computer (PC)**
 - A PC running Microsoft Windows XP with a Pentium 4 2 GHz or faster CPU
 - A PC running Microsoft Windows Vista, Windows 7, Windows 8, Windows 8.1, or Windows10 with a Core2 Duo 2 GHz or faster CPU and 1 GB or more of memory
- **Operating System**
Microsoft Windows Windows Vista, Windows 7, Windows 8, Windows 8.1, or Windows10

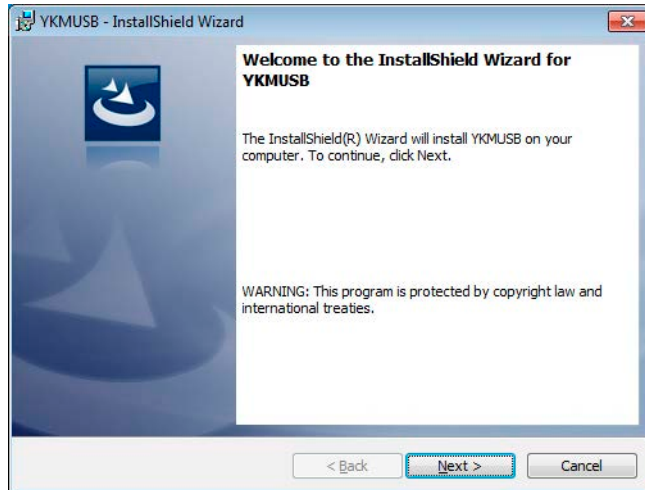
Installing the Driver

CAUTION

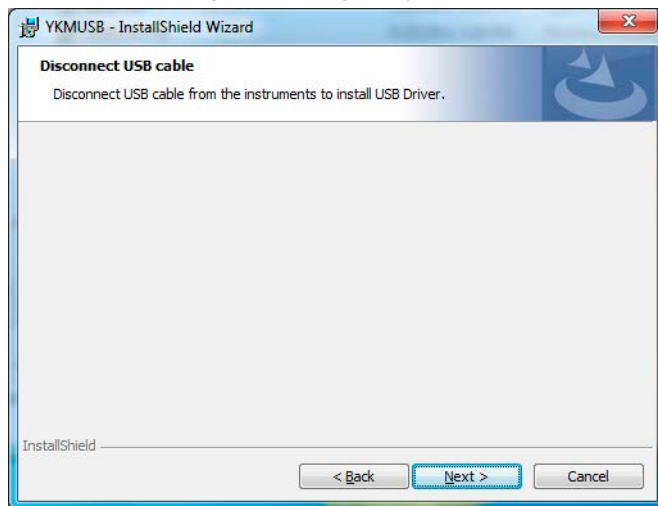
Do not connect your PC to the measuring instrument when you are installing the driver.

This section describes the installation procedure using Windows 7 screenshots.

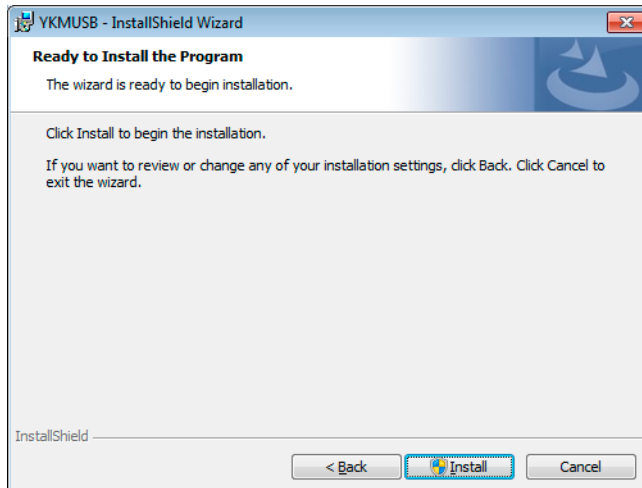
1. On your PC's hard disk, decompress the compressed driver file that you have downloaded. In this example, the file is decompressed in the C:\YKMUSB folder.
2. Run the Setup.exe file. The installation wizard starts.



3. Click **Next**. A message confirming that your PC is not connected to the measuring instrument appears.

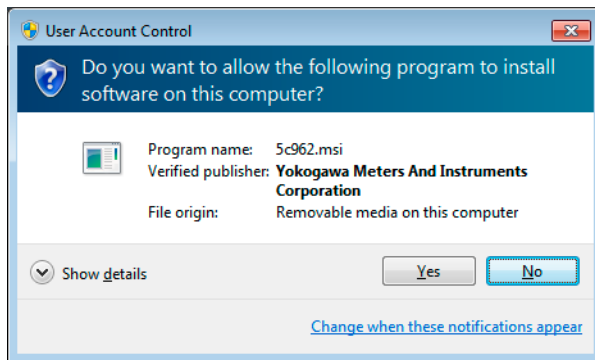


4. Click **Next**. An installation confirmation dialog box appears.



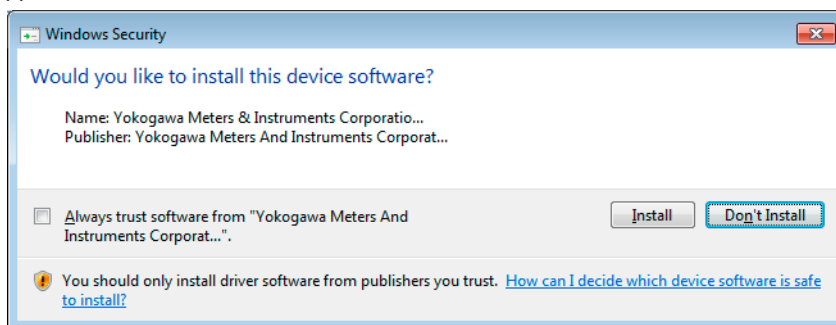
5. Click **Install**. A progress bar appears, and the driver installation starts.

In Windows Vista, Windows 7, Windows 8, Windows 8.1, or Windows 10 a User Account Control dialog box opens during the installation.



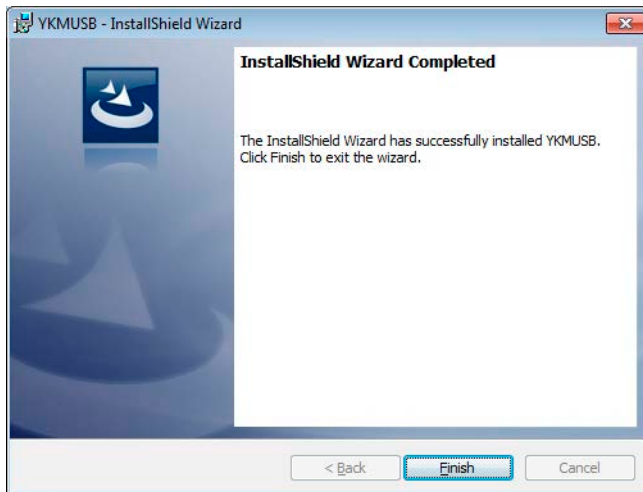
6. Click **Yes**. The installation continues.

In Windows Vista, Windows 7, Windows 8, Windows 8.1, or Windows 10, a Windows Security dialog box appears.



7. Click **Install**.

When the installation is complete, the installation completed dialog box appears.



8. Click **Finish**. The dialog box closes.

The USB driver is installed to the following folder.

Windows Vista, Windows 7, Windows 8, Windows 8.1, or Windows 10

32 bit: **C:\Program Files\YOKOGAWA\Drivers\TM\ykmusb**

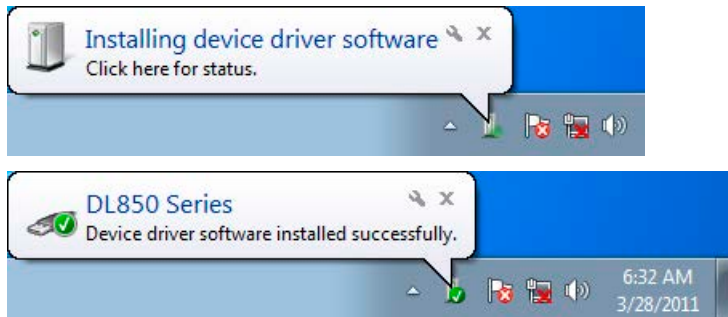
64 bit: **C:\Program Files(x86)\YOKOGAWA\Drivers\TM\ykmusb**

Windows XP: **C:\Program Files\YOKOGAWA\Drivers\TM\ykmusb**

9. Connect the measuring instrument to your PC.

Windows Vista, Windows 7, Windows 8, Windows 8.1, or Windows 10

An icon appears in the notification area, and the driver is installed automatically.



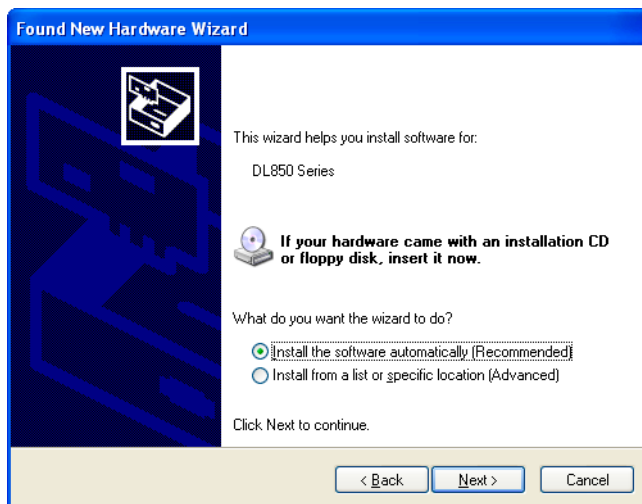
When the driver has been successfully installed, "Yokogawa USB Device" appears in Device Manager.

Windows XP

The Found New Hardware Wizard starts. 1. Select **No, not this time**, and click **Next**.



Select **Install the software automatically**, and click **Next**.



When the installation is complete, the message "Completing the Found New Hardware Wizard" appears. Click **Finish**.

Note

In Windows XP, you need to carry out the above procedure every time you connect a different measuring instrument.

When the driver has been successfully installed, "Yokogawa USB Device" appears in Device Manager.

Uninstalling the Driver

CAUTION

Do not connect your PC to the measuring instrument when you are uninstalling the driver.

1. In Control Panel, remove YMUSB (YMUSB64 for the 64-bit versions of Windows Vista, Windows 7, Windows 8, Windows 8.1, and Windows 10).