

This document explains the firmware update procedure for the MC300 Pressure Controller (hereafter referred to as the MC300).

When updating the firmware, be sure to follow this instruction manual.

## Trademarks

- Microsoft, Windows, and Windows 11 are registered trademarks or trademarks of Microsoft Corporation in the United States and/or other countries.
- Adobe and Acrobat are registered trademarks or trademarks of Adobe Inc.
- Other company and product names are registered trademarks or trademarks of their respective holders.
- In this manual, the ® and TM symbols do not accompany their respective registered trademark or trademark names.

## Disclaimers

By downloading and installing this software, the customer agrees to all of the following disclaimers.

- Yokogawa bears no liability for any problems occurring as a result of downloading or installing this software.
- Yokogawa bears no responsibility for any damage caused directly or indirectly as a result of using this software.
- This software is provided free of charge, however no unlimited warranty against software defects exists, nor is any claim made that the product is free of all defects whatsoever. Also, Yokogawa is not always able to repair defects (“bugs”) in, or respond to questions or inquiries about this software.
- Yokogawa reserves all rights to this software, including but not limited to all property rights, ownership rights, and intellectual property rights.

## PC System Requirements

- Personal computer (PC):  
A PC with a Core2 Duo 2 GHz or faster CPU and 1 GB or more of memory
- OS: Windows 11

## Notes before Updating

### Setup Parameters

When you update the firmware, the MC300 setup parameters will be lost. If necessary, back up the setup parameters before updating.

### Installing the USB Driver

Connect the MC300 to a PC with a USB cable, and update the firmware. To communicate via the USB interface, you need the YOKOGAWA USB driver (YTUSB) installed on your PC. You can download it from our website. For installation instructions, see the manual downloaded with the driver.

<https://tmi.yokogawa.com/library/documents-downloads/software/usb-drivers/>

Required driver: YTUSB

---

## Downloading the Firmware Update Tool

Download the MC300 Firmware Update Tool from the library page or product page on our website to a folder on your PC. User registration is required to download it.

<https://tmi.yokogawa.com/library/>

File to download: MC300 firmware

Unzip the downloaded firmware file, and check that the following files are in the folder.

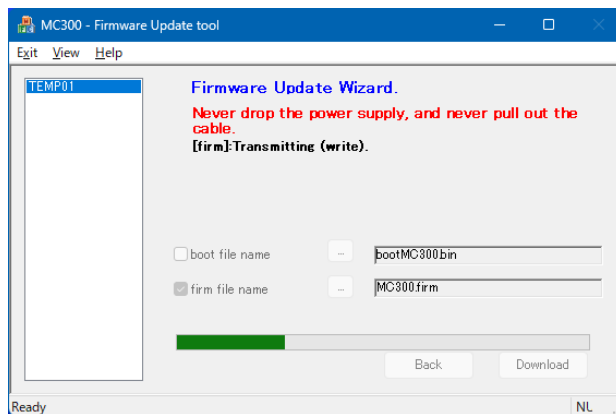
- BootloaderDownloadApp.exe (update program)
- BootloaderDownloadApp.ini (configuration file)
- bootload.dll, tmctl.dll (DLL files)
- MC300.firm (the instrument's firmware data file)
- IMD175-01EN.pdf (Firmware Update Procedure (this manual))

## MC300 Preparation

1. Using a USB cable, connect the USB port (Type-B) on the rear panel to the PC.
2. While holding down the ESC key, turn on the power switch.  
Hold down the ESC key until all the LEDs on the panel illuminate. The MC300 starts in firmware update mode.
3. Check that only a single MC300 running in firmware update mode is connected to the PC.

## Running the Firmware Update Tool

4. In the PC Device Manager, check that the PC has detected the MC300.
5. Double-click the update program (BootloaderDownloadApp.exe) in the unzipped folder.  
The firmware update tool will start and the firmware update will begin.
6. A progress bar shows the update progress.  
It takes about 50 seconds for the update to complete. Do not remove the USB cable or turn off the MC300 until the update is finished. If you do, you may not be able to start the MC300.



7. When updating completes successfully, the update tool closes and the MC300 restarts automatically.

It takes about 60 seconds for the restart after updating. Wait without turning off the power for the display to change from "MC300" to the pressure display screen. If you turn off the power in the middle of the procedure, the factory default adjustment data may become corrupt.

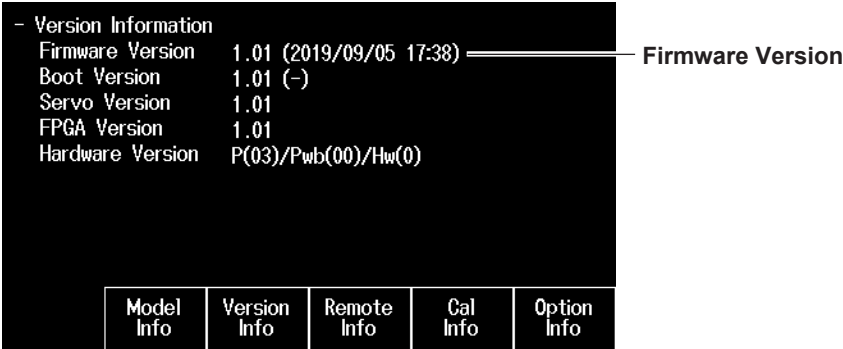
---

## Checking the MC300 Firmware Version

8. When the pressure display screen appears, press **MENU**, and press the soft keys in the following sequence.

Utility → Next 1/3 → Overview → Version Info

9. The following version information screen appears. Check that the firmware version has been updated.



**Note**

If you update the MC300 firmware to the latest version, be sure to use the latest manuals as well. You can download the latest manuals from the library page or the product page on our website.

---