

500 MHz Bandwidth
Miniature Passive Probe

701946

New

The Ideal Accessory for High-density IC and PCB Measurements




701946 500MHz Miniature Passive Probe and accessories


Features :

- **Compact design, probe tip with spring mechanism**
 - The slim probe head provides better visibility.
 - The probe tip utilizes a spring mechanism to absorb stress and to prevent slipping.
- **Wealth of accessories**
 - Accessory system specially designed for probing ICs and high-density integrated PCBs.
 - Unique 2 footer positioner enables hands-free, multi-channel measurement.
- **Corresponds to oscilloscope's automatic probe detection system**

For DLM2000,DL6000/DLM6000, it is possible to specify 701946 probe as a substitute for the standard 701938/701939 probes. (Optional)

Versatility :

- **For general purpose**
 - When pinching**


Pincher tip, Ground lead
 - When not pinching**



Insulating cap, Ground lead

- **Hands-free**



2 Footer Positioner

- **For high frequency signal measurement**

Minimize the ground connection



Ground spring



Signal Ground

PCB adapter kit

- **IC contacting system**


Ground blade
Adhesive Cu pads



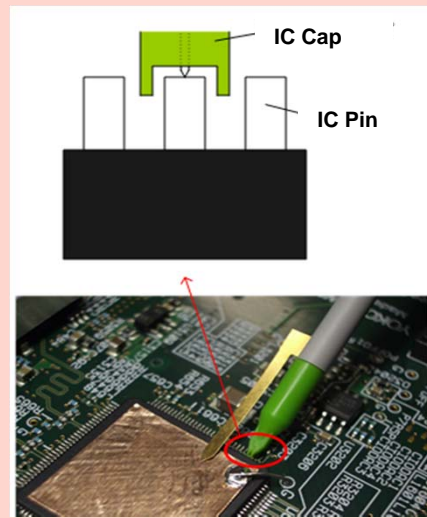
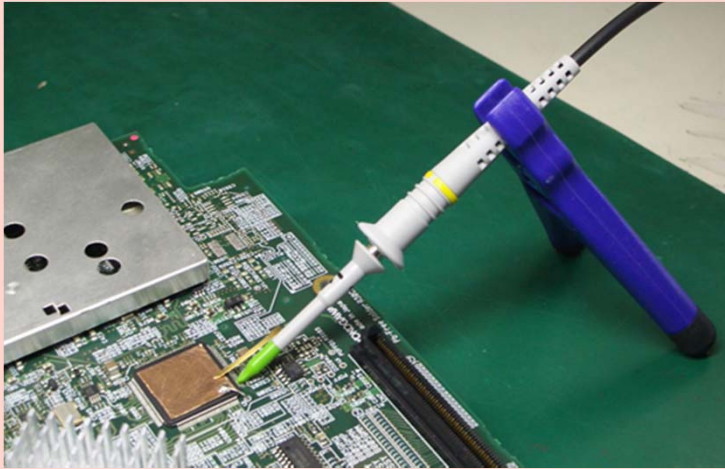
IC caps
(0.5 mm to 1.27 mm pitch)

- **Two types of probe tips (Interchangeable)**

Upper: Spring tip
Lower: Rigid tip



Example of IC measurement :



- **Adhesive Cu pads, Ground blade --- Enables short and easy-to-use ground connection.**
When measuring signals that contain high frequency components, to reduce the ringing caused by standard ground lead inductance, it is important to reduce the length of the ground connection. By attaching one of the included adhesive Cu pads to the top of the IC, connecting the Cu pad to the ground pin, and installing the ground blade on the probe, you can minimize the length of the ground connection.
- **IC Cap --- Enables safety contact to pins of fine-pitch ICs.**
By using the included IC caps, you can easily make connections to the pins of fine-pitch ICs. There are five types of IC caps included. These IC caps have a pitch ranging from 0.5 mm to 1.27 mm.
- **2 Foot Positioner --- For hands-free, multi-channel measurement.**
The weighted 2 Foot Positioner, along with the spring mechanism of the probe tip, enables hands-free yet secure contact to DUTs. This positioner is especially effective when measuring multiple channels on high-density integrated PCBs.

Probe model

Name	Model
Miniature passive probe	701946

Specifications

Compatible Instrument	DLM2000, DL6000/DLM6000 series
System Bandwidth	500 MHz (-3 dB)
Input Resistance	10 MΩ ± 1%
Input Capacitance	9.5 pF (Typical value)
Attenuation Ratio	10:1 ± 2% (DC)
Maximum Input Voltage	400 Vrms
Cable Length	1.3 m

DLM2000 Series Suffix Codes

Suffix code	Description
/EX22	Attach two 701946 probes (For 2ch, 200 MHz models)
/EX24	Attach four 701946 probes (For 4ch, 200 MHz models)
/EX52	Attach two 701946 probes (For 2ch, 350/500 MHz Models)
/EX54	Attach four 701946 probes (For 4ch, 350/500 MHz models)

DL6000/DLM6000 Series Suffix Codes

Suffix code	Description
/EX4	Attach four 701946 probes

YOKOGAWA 
Yokogawa Meters & Instruments Corporation

YOKOGAWA METERS & INSTRUMENTS CORPORATION
Global Sales Dept.

Tachihi Bld. No.2, 6-1-3 Sakaecho, Tachikawa-shi, Tokyo, 190-8586 Japan
Phone: +81-42-534-1413 Facsimile: +81-42-534-1426

YOKOGAWA CORPORATION OF AMERICA
2 Dart Road, Newnan, GA. 30265-1094 U.S.A.
Phone: +1-770-253-7000 Facsimile: +1-770-254-0928

YOKOGAWA EUROPE B. V.
Euroweg 2 3825 HD Amersfoort, THE NETHERLANDS
Phone: +31-88-4641000 Facsimile: +31-88-4641111

YOKOGAWA ENGINEERING ASIA PTE. LTD.
5 Bedok South Road, Singapore 469270 SINGAPORE
Phone: +65-6241-9933 Facsimile: +65-6241-2606

YOKOGAWA AMERICA DO SUL LTDA.
Praca Acapulco, 31-Santo Amaro, Sao Paulo/SP, BRAZIL CEP-04675-190
Phone: +55-11-5681-2400
Facsimile: +55-11-5681-4434

YOKOGAWA MEASURING INSTRUMENTS
KOREA CORPORATION
City Air Terminal Bldg. 405-9, #159-6, Samsung-dong,
Kangnam-ku, Seoul, 135-728 KOREA
Phone: +82-2-551-0660 to 0664 Facsimile: +82-2-551-0665

YOKOGAWA AUSTRALIA PTY. LTD.
Tower A/112-118 Talavera Road Macquarie Park, NSW 2113, Australia
Phone: +61-2-8870-1100 Facsimile: +61-2-8870-1111

YOKOGAWA INDIA LTD.
Plot No. 96, Electronic City Complex, Hosur Road, Bangalore 560100, INDIA
Phone: +91-80-4158-6000 Facsimile: +91-80-2852-1442

YOKOGAWA SHANGHAI TRADING CO., LTD.
4F Tower D, Cartelo Crocodile Building, No.568 West Tianshan Road,
Shanghai, CHINA
Phone: +86-21-6239-6363 Facsimile: +86-21-6880-4987

YOKOGAWA MIDDLE EAST B. S. C.(C)
P.O.BOX 10070, Manama, Building 577, Road 2516,
Busaiten 225, Muharraq, BAHRAIN
Phone: +973-17-358100 Facsimile: +973-17-336100

YOKOGAWA ELECTRIC CIS LTD.
Grokhol'skiy per. 13, Build. 2, 4th Floor, 129090, Moscow
RUSSIAN FEDERATION
Phone: +7-495-737-7868 Facsimile: +7-495-737-7869

Represented by :